

## Cable Kit 3432 Interface 3009/49

### Mimer SoftRadio – Sepura SCG22

#### Remote functionality

This cable kit will together with the Mimer Network Interface give remote control of the radio's audio and PTT functions and it will present a full function Virtual Control Head.



Both a Sepura radio terminal and a control head is needed.

#### Radio programming

The radio shall be fitted with the option called "Line in / Line out".

The PEI port on the radio shall be active in the accessory connector where you connect the cable kit.

PEI port shall be set to default 38400 Baud.

Without the PEI-port you can still operate the radio, but you lose functions like showing ISSI/GSSI in RadioCalls and in the VoiceLog.

*For use with MapView, see page 3.*

#### Power Connection

The red wire on the cable kit shall be connected to +12V and the black to ground.

The radio shall be powered through this cable kit instead of the standard power cable to avoid hum and noise.

#### Interface Connection

Connect the interface to both the standard control head and to the radio unit. Either control head SCC1 or SCC3 works.

The cable kits 15 PIN D-sub female connector goes to the control heads cable. The 15 PIN D-sub male connector goes to the radios Console port.

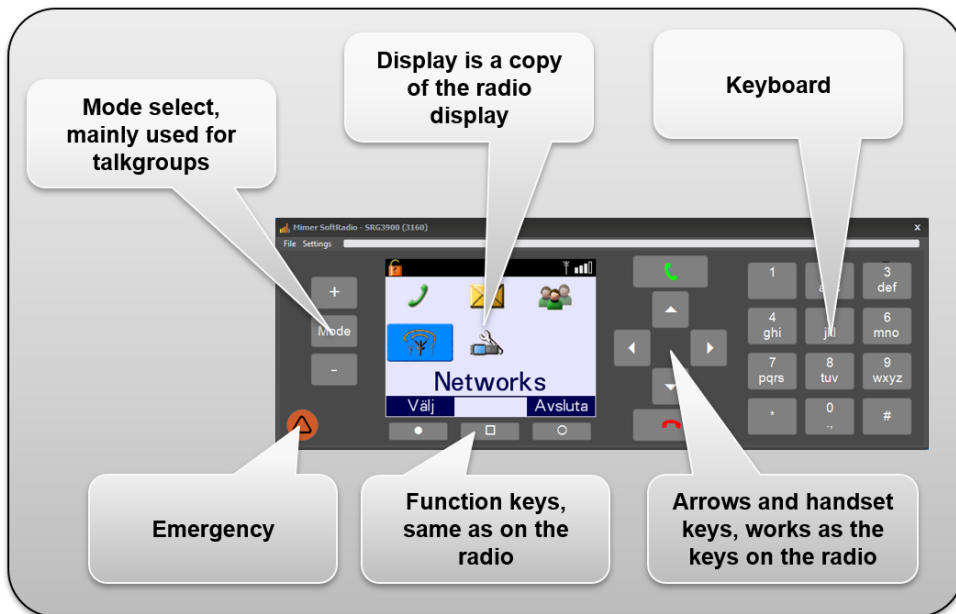


*Sepura SRG with Network Interface and cable kit  
The connections are the same on the SCG22*

### Virtual Control Head functions

The Virtual Control Head is a copy of the modern color screen type control head.

The full display is presented exactly as it is on the radio, and all keys work as they do on the ordinary control head.



### **Control Head Style**

On the virtual control Head “Settings”-menu you can select two layout types, representing the different control head styles.



### **When used with Mimer MapView**

When the interface and cable kit is used together with a MapView server, you don't need to connect a physical control head to the cable kit.

For MapView to collect incoming position data, you need to access the radios PEI port. Please check in the radios programming that it is active in the accessory port where you connect the cable kit.

Further instructions in the MapView setup guide.