

Cable Kit 3307/02 Network Interface 3009/55

Mimer SoftRadio – Hytera MD785

Also, MD780, MD782, MD788

Remote functionality

This cable kit will together with the Mimer Network Interface 3009/55 give remote control of the radios audio and PTT functions.



SoftRadio will also display a Virtual Control Head with full control of the keys and the display. All functions in the radio can be remote controlled.

Radio programming

You need to set the Accessory port communication to USB with RNDIS, the GPIO PIN16 for external microphone PTT and PIN5 for Ext Alarm high. See next page for CPS screen dumps.

Apart from that, no special programming is needed in the radio.

The radio needs to have firmware 7.0 or later.

Cable Kit

The red and black wires shall be connected to 12VDC, red is positive.

The network interface consumes max 0,3A.

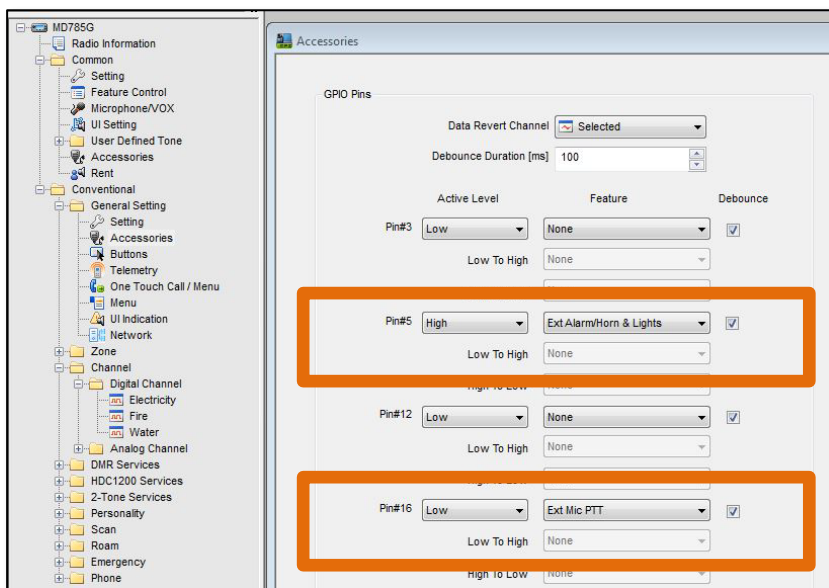
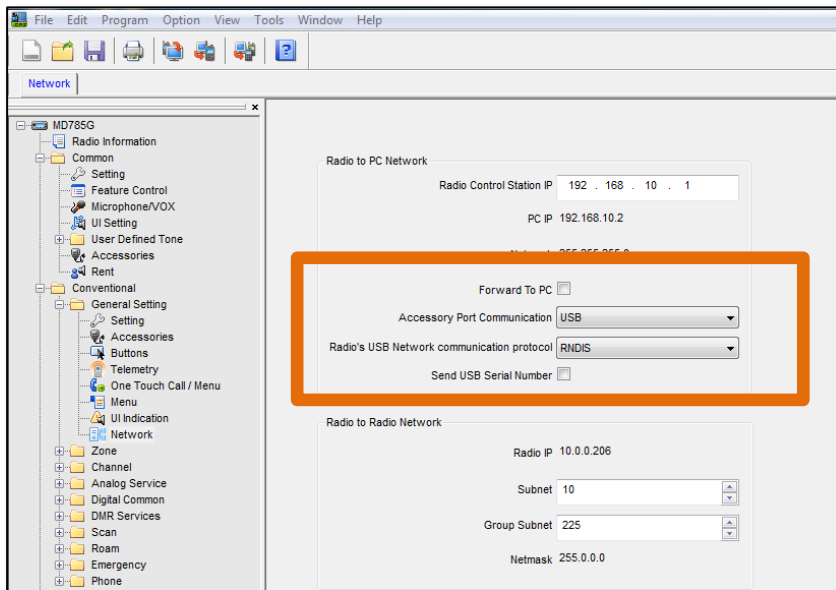


*Network Interface connected to
Hytera MD785*

Please note

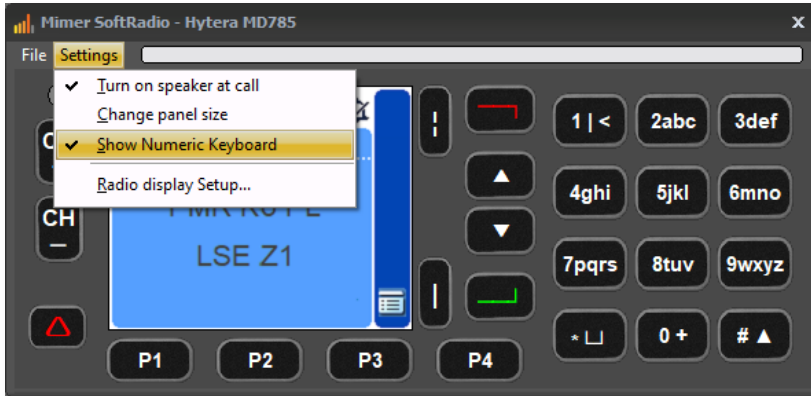
The remote function cannot work at the same time as the radios programming cable is attached. Disconnect the programming cable before connecting the Network Interface.

Screen dumps from the Hytera CPS:

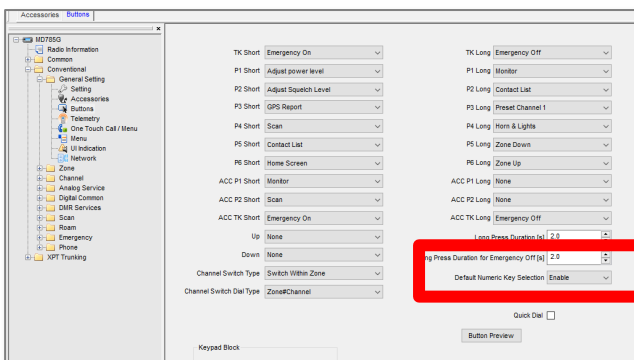


Keypad use on the Virtual Control Head

Although the radios control head does not have a keyboard for channel or number entry, the Virtual Control Head can be set to display a keyboard.



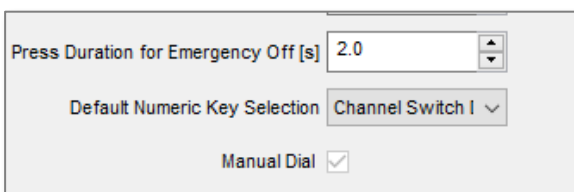
This is useful in systems where the radio operator often sends private calls or has many channels to choose from. It is faster to enter a channel number than to select with the up/down arrows. For example when used as a marine VHF radio.



Setting to use the virtual keyboard for Private Calls

The PC's keyboard can also be used in parallel for number entry.

To use the keypad for channel change, instead program "Default Numeric Key Selection" to "Channel Switch Dial" under the "General Settings/Buttons" menu.

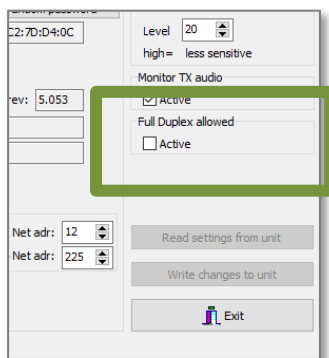


Duplex operation

The radios are simplex or semi-duplex, so you transmit, or you receive, not both at the same time. But there are in some radio systems the need to hear beeps from the radios speaker at the same time as you are transmitting. For example, a “clear to send” beep.

To be able to hear this beep when you are holding the PTT key, you need to activate full duplex in the SoftRadio system. This will allow the radios speaker audio to come through, to the PC, also during PTT.

Tick in the box “Full Duplex allowed” in Network Interface Setup.



Virtual Control Head functions

