

Cable Kit 3243 Interface 3009/48

Icom IC-F5400/F6400-Series radios

Remote functionality

This cable kit will together with the Mimer Network Interface give remote control of the radios audio and PTT functions.

Also, the channel and the zone can be set remotely from SoftRadio. From SoftRadio 4.2.0.0, also a numeric keyboard can be activated.

Radio programming

The PTT input port needs to be selected, a communication port needs to be activated and a fixed volume needs to be set. See the following pages for details.

Interface programming

The Network Interface needs to be setup correctly in order for the channels to be selected and to be displayed with names. See the following pages.

Cable Kit

The red and black wires shall be connected to 12VDC, red is positive.

The network interface consumes max 0,3A.

Please note that the black connector marked "Radio" shall be connected to the radio and the yellow connector marked "3243" shall be connected to the network interface.

Connect the 3,5mm audio connector to the radios external speaker output.



Cable Kit 3243

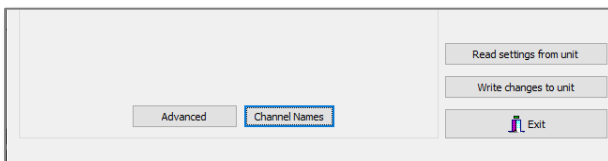
Channel name setup

The radio does not report the channel names, only a technical number, to external devices. For this reason it is important to make a list of channel names and zones and save it in the interface.

The list needs to be an exact copy of the list in the radio. If the programming of a channel, in the future, is changed in the radio, it also needs to be updated in the interface.

When all is correct, the Virtual Control Head in SoftRadio will show the name of the channel.

Click the “Channel Names” button in “Interface Setup”.



Add the number of zones and channels in each zone exactly as it is programmed in the radio.

It is important that you have the exact same number of zones and channels.

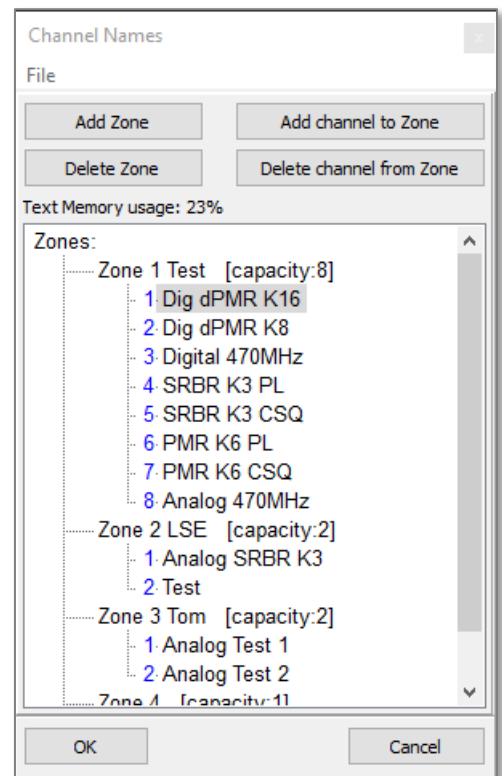
There shall be no empty spaces in the list.

Name the channels as they are in the radio, or if preferred, with other names. All ASCII letters can be used.

Please note that there is a maximum size of the total amount of channel names. Therefore there is a “Text memory usage” percent counter. If you reach the limit, you will need to shorten some of the texts.

The memory size was increased from interface firmware 6.084, this can be used on network interfaces with serial numbers 3000 and up.

Push “OK” and then “Write changes to unit”.



Showing of numeric keyboard

In some setups it can be useful to have the keyboard and the red/green keys available. This can be activated by a setting in the virtual control head.

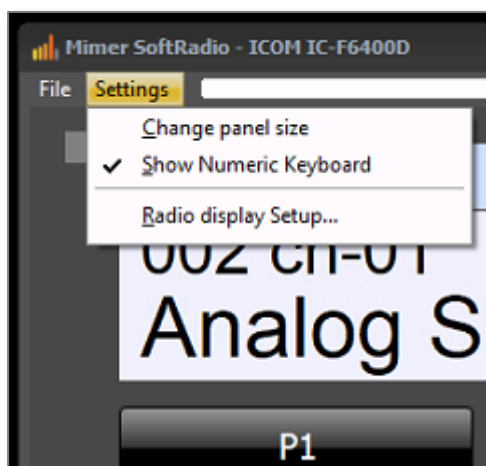
This function is available from SoftRadio 4.2.0.0.



Virtual control head w/o the keyboard



Virtual control head with the keyboard

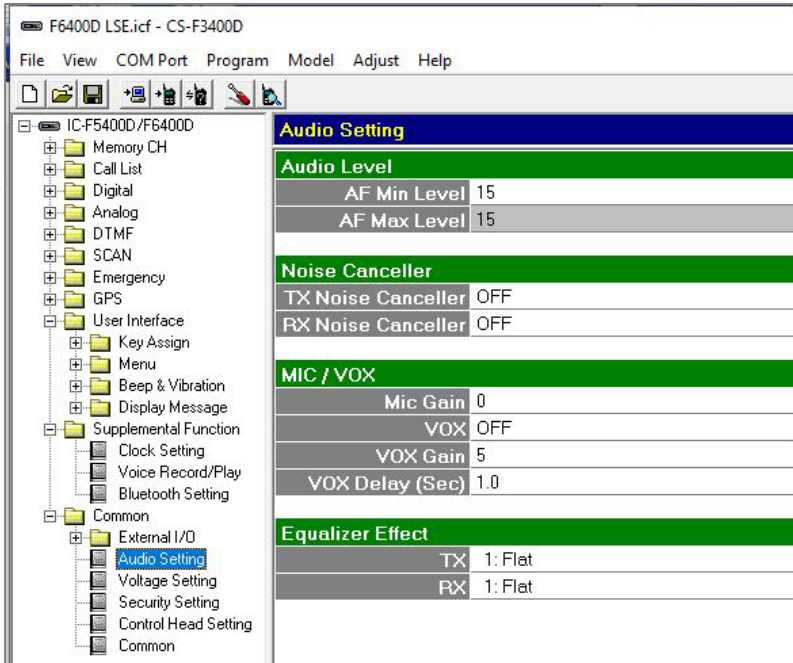


Setup of the keyboard

Radio Settings

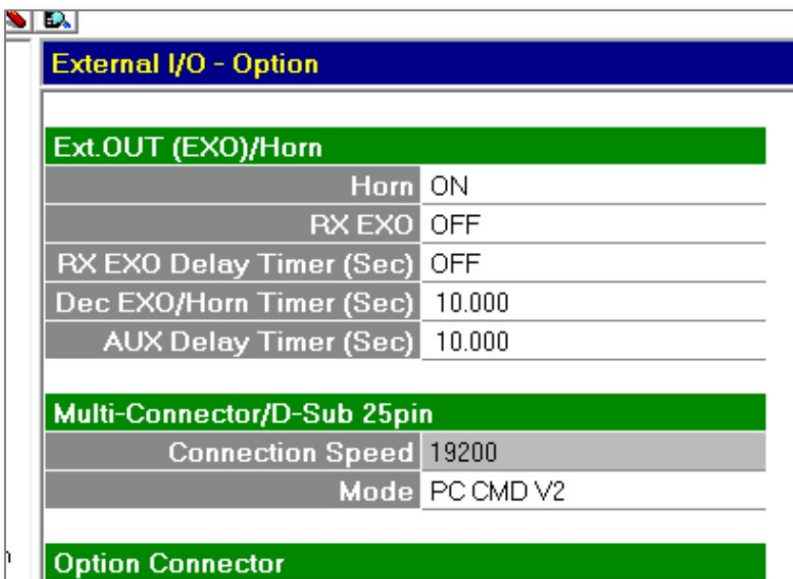
Audio

Set both the Min and Max Audio Level to 15. This will force the external audio to have a fixed volume level that is accepted by the Network Interface.



Communication port

Set the connection speed and the mode, on the D-Sub 25pin, as described below.



PTT

Set the Ext I/O 19 to EPTT active Low.

The screenshot shows the software interface for the IC-F5400D/F6400D. The left sidebar displays a tree view of settings, with 'Port Setting' selected under 'External I/O'. The main window displays two tables of port settings.

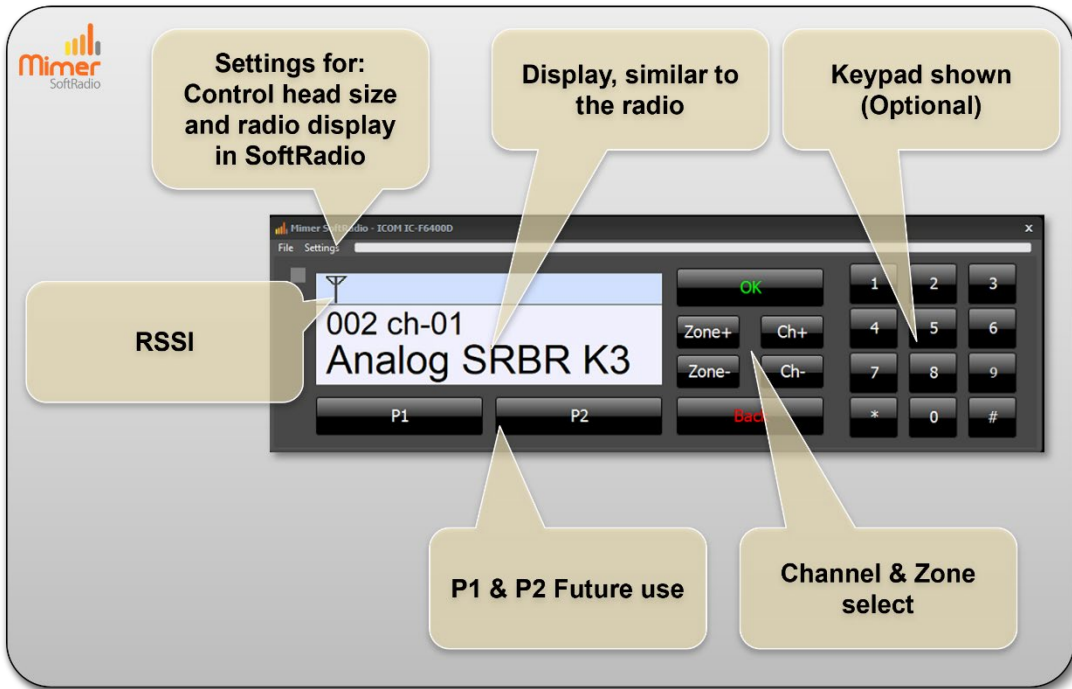
D-Sub 25pin

Port	In/Out	Function	Active Logic
Ext.O 10	Output	Horn	Low
Ext.I/O 15	Output	Null	Low
Ext.I/O 17	Output	Busy	Low
Ext.I/O 18	Output	Null	Low
Ext.I/O 19	Input	EPTT	Low
Ext.I/O 21	Output	Analog Audible	Low
Ext.I/O 23	Output	Mic Mute	Low
Ext.I 24	Input	Dimmer	High
Ext.I/O 25	Output	Null	Low

Option Connector 22pin

Port	In/Out	Function	Active Logic
Opt.I/O 18	Output	Null	Low
Opt.I/O 19	Output	Null	Low
Opt.I/O 20	Output	Null	Low
Opt.I/O 21	Output	Null	Low
Opt.I/O 22	Output	Null	Low

Functions on the Virtual Control Head



Showing the ID of a transmitting radio, during reception, when used in digital mode. (old layout of Zone and Channel keys)