

Cable Kit 3166/02 Interface 3009/42

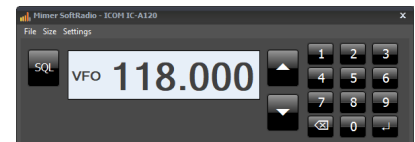
Mimer SoftRadio for Icom IC-A120



Remote functionality

This cable kit will together with the Mimer Network Interface give remote control of the radio's audio and PTT functions.

It will also, through a Virtual Control Head, give the possibility to change channel and set the squelch level.



Virtual Control Head A120

From SoftRadio version 4.2.0.0 it will also give the possibility to have three extra keys for memory channels. See instructions further down.

Radio programming

No special programming is needed in the radio.

The radios volume control knob shall be set for 50% volume. This is when the knob points straight up (12 o'clock).

Cable Kit

The red and black wires shall be connected to 12VDC, red is positive.

The network interface consumes max 0,3A.



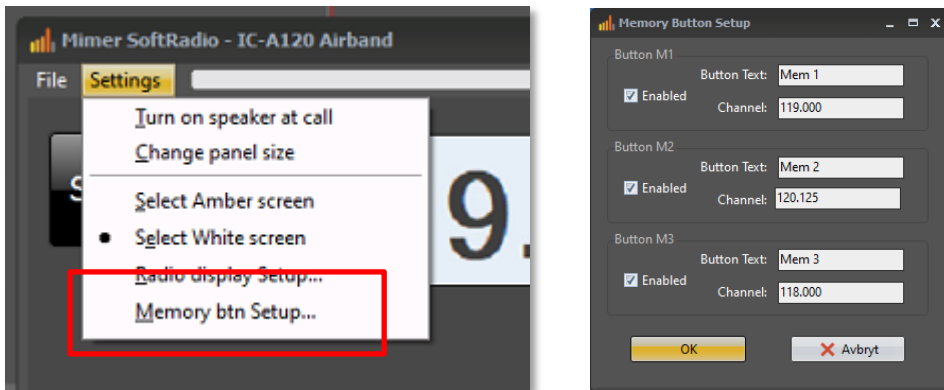
Cable Kit 3166/02 for Icom IC-A120

Activation of memory keys

The memory keys are normally hidden. Through a menu available on the virtual control head, you can activate one, two or three keys.

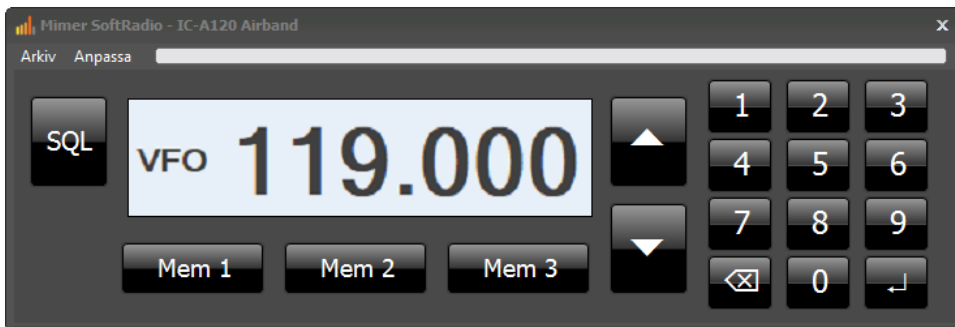
For each key, you can set a fixed channel. Pushing the key will set the radio to this channel.

The keys can be named in any way you like.



Select the menu “Memory btn Setup...” on the virtual control head.

Tick in the number of keys that are needed and fill in channel name (frequency) and button text.



Virtual control head with three memory keys activated.

Screen Colour and more

The screen background colour can be set in either Amber or White. This is done from the drop down of the virtual control head.

There you will also find settings for panel size and the setup for the small display in SoftRadio.

Virtual Control Head functions

