

Cable Kit 3092 Interface 3009/56

Mimer SoftRadio – Sailor 6222 & 6248

Remote functionality

This cable kit will together with the Mimer Network Interface give remote control of the radio's audio and PTT functions.

Mimer SoftRadio will also show a full Virtual Control Head, resembling the radios front panel. All the radios functions are available from there.

Radio programming

No special programming is needed in the radio.

The volume control on the radio front panel does not change the audio to the interface, so it can be turned all the way down.

Cable Kit

The red and black wires shall be connected to 12VDC, red is positive.

The network interface consumes max 0,3A.

For the remote-control function, the radio also needs to be connected to the same LAN as the network interface, through a standard LAN cable. See next page.

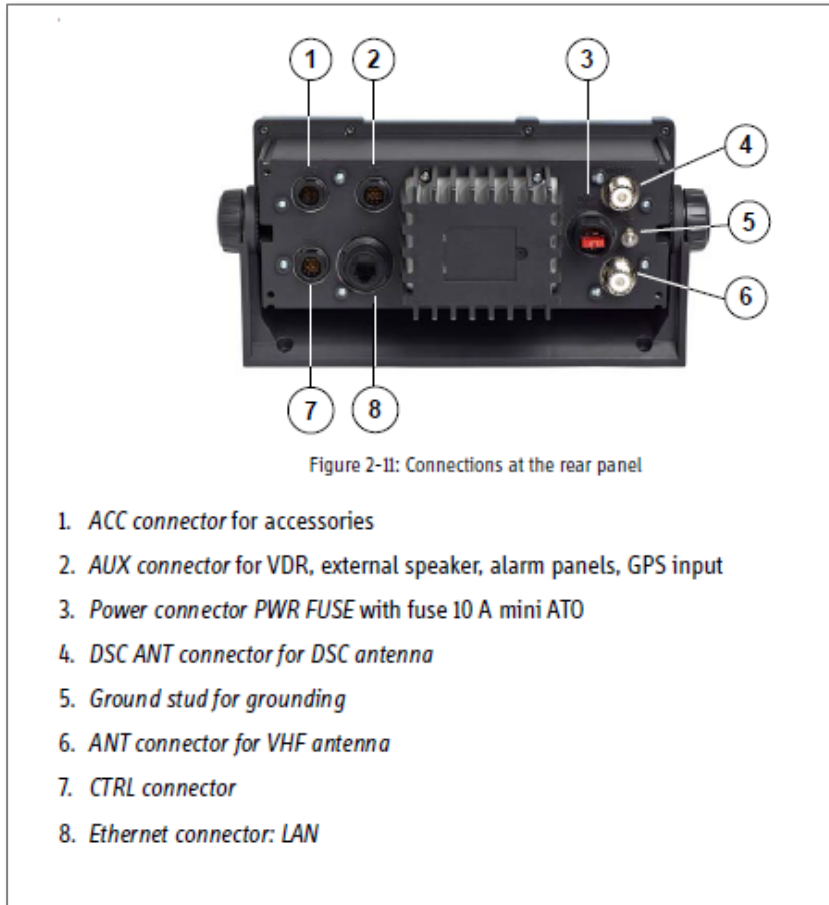


Cable Kit Sailor

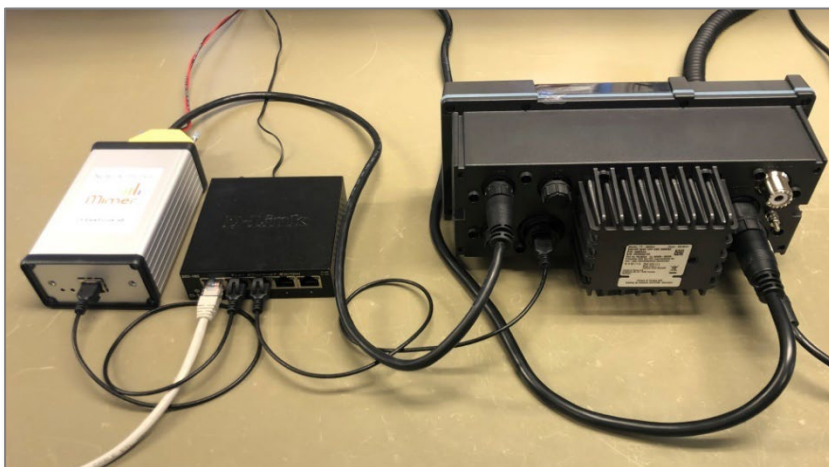


Connectors at the rear

- Connect the interface cable in connector 1
- Connect a standard LAN cable in connector 8



Picture from Sailor Installation Manual



Connection, note the LAN cables to both radio and interface

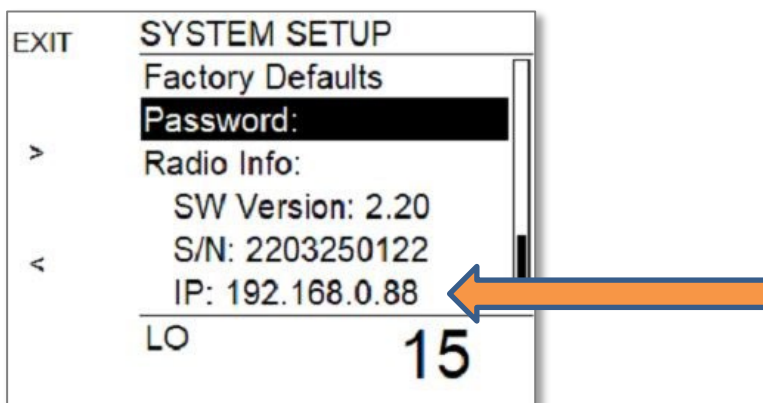
LAN setup

The remote control of the radios functions is done through an IP connection. Therefore the radios IP address needs to be setup in the Network Interface.

Radio IP address

The LAN will need to have DHCP functionality, so that the radio is given an IP address from the network. There is no way to set a fixed IP in the radio.

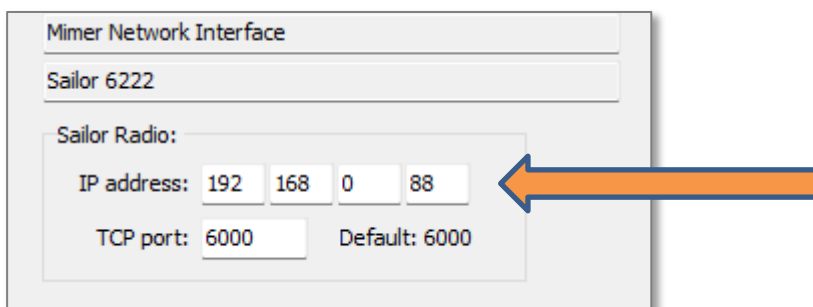
Check the radios IP address through the menus on the radio. In the menu SETUP / SYSTEM SETUP, scroll down to the bottom and read Radio Info / IP.



TIP: When using the LAN DHCP, it is recommended to make the address fixed in the LAN router, so that it will not change at a later point in time.

Setting in the Network Interface

Set the radios IP address in the program "Mimer Interface Setup". See picture below.

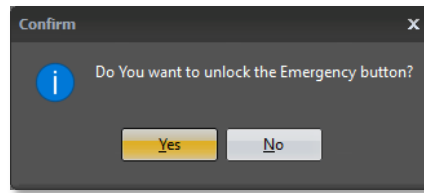


Here you can also set a TCP port if you would like to install the radio in another LAN subnet than the network interface.

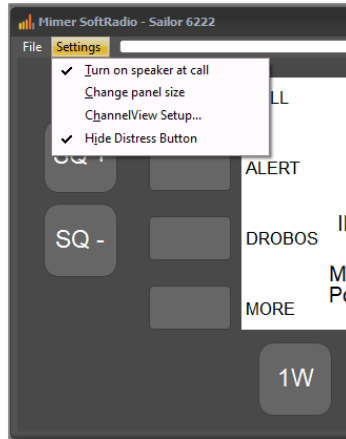
Port setting available from 4.2.0.0. and interface firmware 6.121.

Distress button

When pushing the Distress key, you will get a dialogue box, as to the right. This double function is the equivalent of the lid over the physical key on the radio.



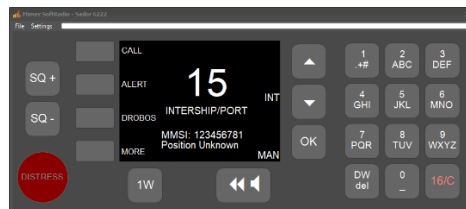
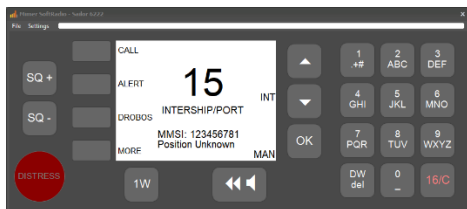
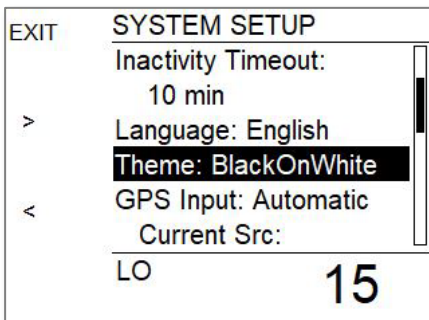
You can also select **not to show** the Distress key on the Virtual Control Head. This is set on the drop down on the Virtual Control Head. (Function available from version 4.1.0.13)



Showing the setting for hiding the key, and the VCH w/o Distress key

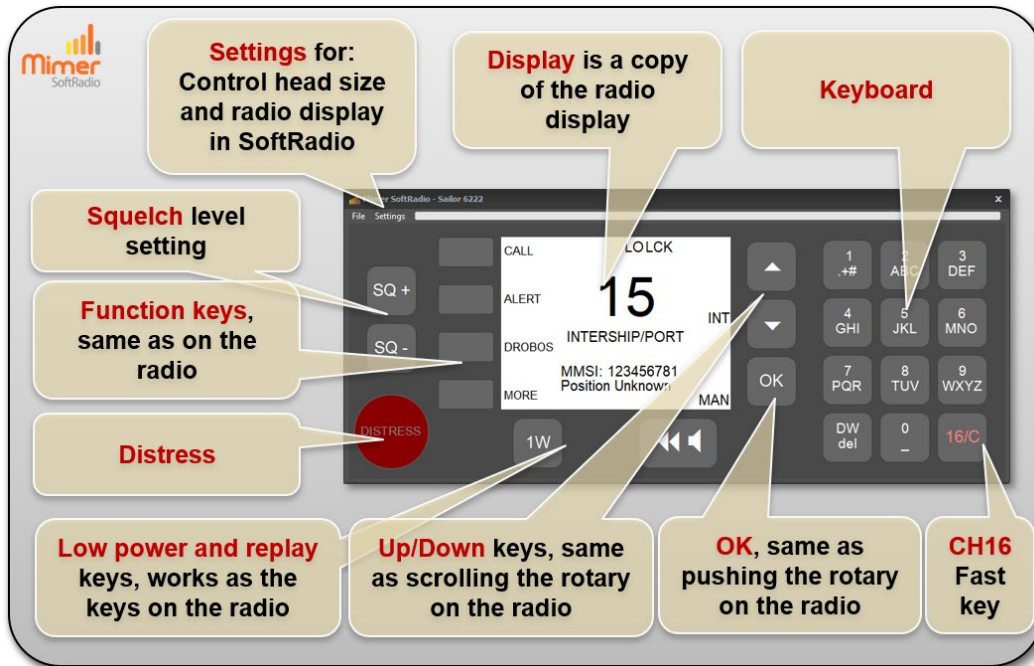
Display setup

The display theme can be set in the radio's menus. The selection will follow into SoftRadio. This is done in the menu SETUP / SYSTEM SETUP. Se picture below.



Displays with "BlackOnWhite" and "WhiteOnBlack"

Virtual Control Head Functions



Note: In about 8 seconds after a transmit at any SoftRadio operator, the radio is locked for any changes. This is indicated by a grey screen on the Virtual Control Head. A new PTT can be made, but no channel change or other function.

Also, if someone is using the physical front panel of the radio, settings will be blocked in SoftRadio for a while.

