

Cable Kit 3421 Interface 3422

Mimer SoftRadio – Sepura SRG3900 / SCG22

Remote functionality

This cable kit will together with the Mimer Network Interface give remote control of the radio and will present a full function Virtual Control Head. **No audio is possible.**

Both a Sepura radio terminal and a control head is needed.

Radio programming

The PEI port on the radio shall be active in the accessory connector where you connect the cable kit.

PEI port shall be set to default 38400 Baud.

Without the PEI-port you can still operate the radio, but you lose functions like showing ISSI/GSSI in RadioCalls and in the VoiceLog.

Cable Kit

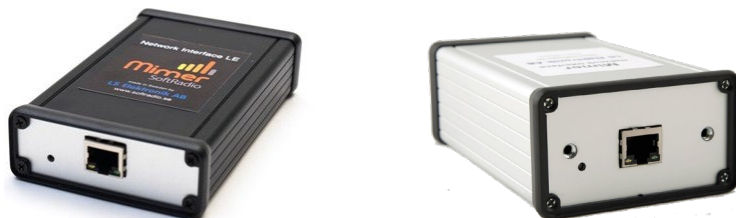
The red wire on the cable kit shall be connected to +12V and the black to ground.

Note: When connected to a SCG22, the Sepura adaptor cable 300-02007 is also needed.

Connection

Connect the interface to both the standard control head and to the radio unit. Either SCC1 or SCC3 works.

Note: The old control head with black/white screen will not work with this kit.



The interface is normally delivered in the small black interface box but can also be delivered in the larger silver box.

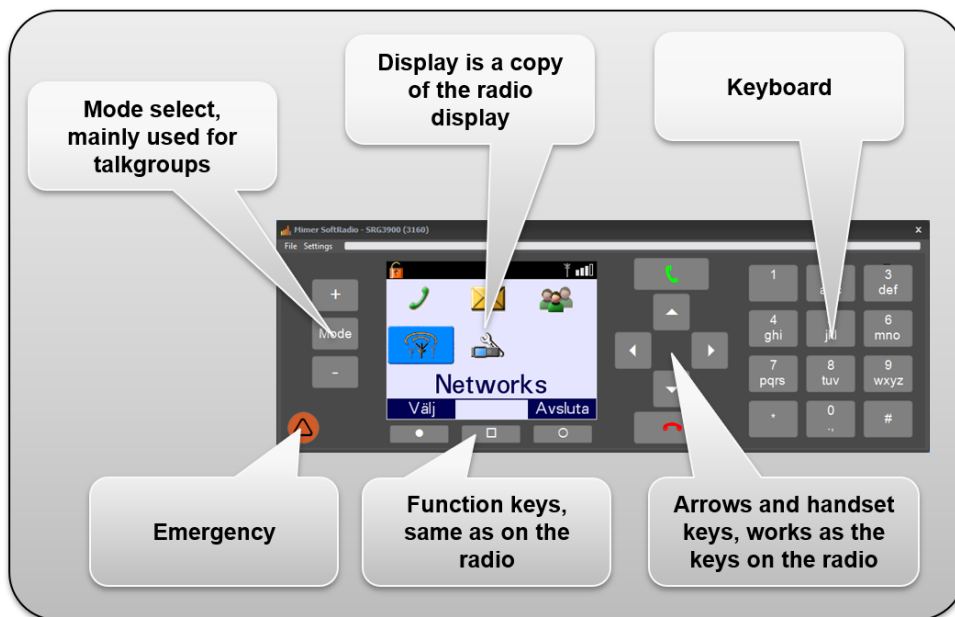


Sepura SRG with Network Interface and cable kit

Virtual Control Head functions

The Virtual Control Head is a copy of the modern color screen type control head.

The full display is presented exactly as it is on the radio, and all keys work as they do on the ordinary control head.



Please note that the +/- keys sets the volume level in the same way as it does on the radios front panel. To avoid changing the volume for all operators that share the same radio, please leave the volume at 2/3 of max volume.

Alternatively reprogram the SRG to have a fixed volume that can't be changed from the control head.

Control Head Style

On the virtual control Head “Settings”-menu you can select two layout types, representing the different control head styles.

