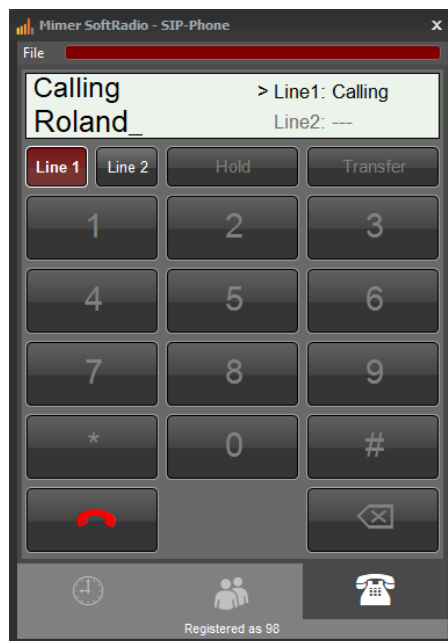


Mimer SoftRadio

Connecting radios all over the world

How to set-up and use Mimer SIP Option Option 3154



Release date Aug 31, 2020

This guide will help with the setup and use of your **Mimer SIP-Option**.

Please also refer to the web page www.lse.se.

The SoftRadio FAQ also has a section for SIP setup. www.lse.se/faq

1 Table of Contents

1	TABLE OF CONTENTS	2
2	GENERAL	3
2.1	OTHER PHONE SYSTEMS	3
3	SIP OPTION INSTALLATION	4
3.1	RECOMMENDED HARDWARE AND SOFTWARE	4
3.2	INSTALLATION	4
4	CONFIGURATION	4
4.1	SIP EXCHANGE SETTINGS	4
4.2	SIP OPTION SETTINGS	4
4.2.1	<i>Extra settings</i>	5
5	BASIC FUNCTIONALITY	5
6	USING THE SIP CLIENT	6
6.1	RECEIVING A PHONE CALL	6
6.2	MAKING A PHONE CALL	7
6.2.1	<i>Phone tab</i>	7
6.2.2	<i>Contacts Tab</i>	7
6.2.3	<i>History Tab</i>	7
6.3	PLACING A CALL ON HOLD	8
6.4	TRANSFERRING A CALL	8
7	THE CONTACT LIST	9
7.1.1	<i>Manage all contacts</i>	9
7.1.2	<i>Default number</i>	10
8	THE HISTORY LIST	10
9	OPTIONAL FUNCTIONS	11
9.1	CROSS-PATCHING OF CALLS	11
9.2	RECORDING OF CALLS	11
10	TECHNICAL PROBLEMS	11

2 General

Mimer SoftRadio is a dispatch system that handles radios, intercoms and phones from a common PC GUI.

The **SIP Option** makes it possible to connect the dispatcher to a SIP exchange. The dispatcher then gets a SIP client in his SoftRadio GUI so that he can handle phone calls from the same GUI and use the same headset for phone calls as when working with radio calls.

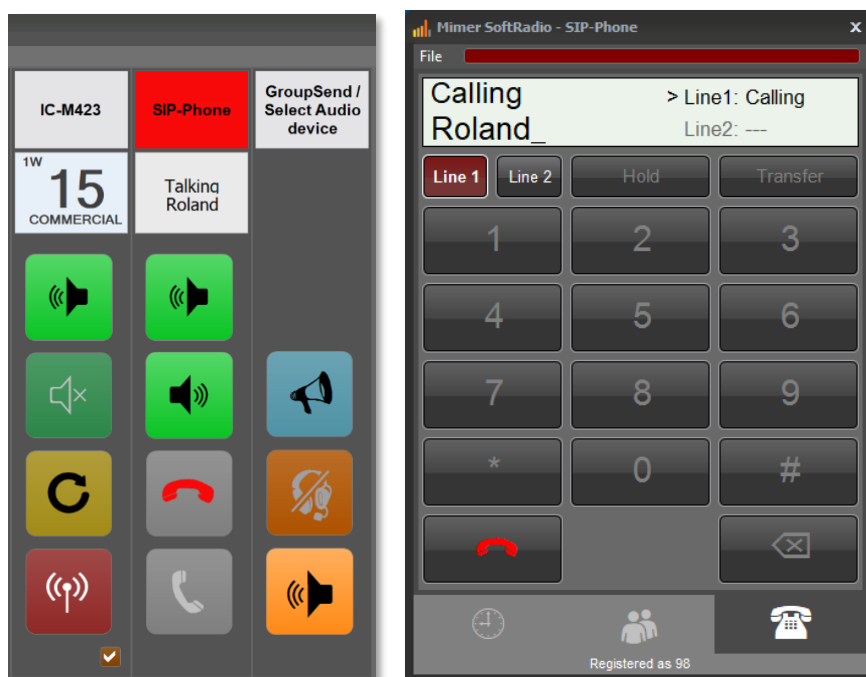
The SIP Option requires no extra hardware, it connects over IP to your SIP exchange.

With the SIP option each operator PC gets its own telephone number.

2.1 Other phone systems

For analogue phone systems there is a network interface that connects to phone lines (POTS) and for cellular systems there is network interface that connects to a GSM/3G modem.

When using the interfaces for POTS and/or GSM/3G, the phone line is a common resource shared by all operators.



Example of SoftRadio and number entry window with ongoing call

3 SIP Option installation

3.1 Recommended hardware and software

The PC running the SIP Option also needs to have the basic software “Mimer SoftRadio” installed.

Mimer SoftRadio needs to be version 3.5.2.0 or higher for the SIP Option to work.

3.2 Installation

Run the installation from the supplied USB stick or online download.

The installation will setup the SIP Option.

Restart Mimer SoftRadio.

4 Configuration

Before use, you need to do some settings.

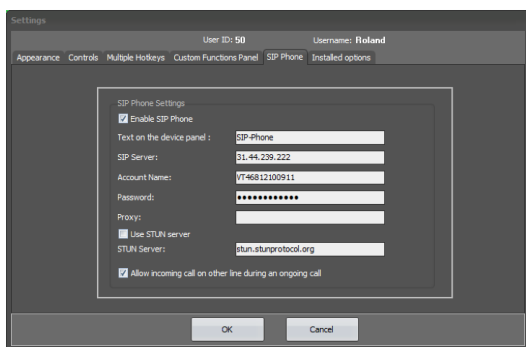
4.1 SIP exchange settings

First of all you need to have a SIP account. You shall either have your own private SIP Exchange or an account at one of the many on-line SIP providers that exists.

How this is done and what functions you can use will be different depending on the type of SIP exchange that you are using. Please refer to the manuals of the exchange or information you have got from the SIP provider you are using. If uncertain talk to your IT manager.

4.2 SIP Option settings

You will find the basic configurations for the SIP account under “Settings” in Mimer SoftRadio. Select the “SIP Phone” tab.



Setup window

First tick the box “Enable SIP Phone”

Then enter the information that is appropriate for your account. Typically you need the SIP Server name or IP (may also be called something like host name, SIP proxy, etc.), an account name, and the password for the account. Sometimes you may also need to enter an outbound proxy or specify the use of a STUN server. If so, this shall be specified by the SIP provider. If uncertain about the entries talk to your IT manager.

When correctly connected to the SIP Exchange the Phone Panel will show your registered number at the bottom.



4.2.1 Extra settings

- You may change the text that is shown on the device panel in SoftRadio. Default is "SIP-Phone".
- There is also a tick box where you can select if you would like it to ring in your phone client, when a second call comes in, while you already have an ongoing call.
- On the "Controls" tab in Settings you can select that the volume of radio calls shall be decreased when a phone call is active.

5 Basic functionality

The functions in your SIP client will depend highly on what functions your SIP exchange allows you.

Normally your client is set up with a direct phone number in the SIP exchange. It can also be set up with a group number or similar depending on the functions available and the functions needed.

Basically you have access to two "phone lines". You can have separate calls ongoing on each of the two lines and switch between them. This is for example used if you have an ongoing call and needs to call someone else and check something. You can then put the first call on hold and use the other line.

When using SIP with Mimer SoftRadio each operator gets his own telephone number. (When using other phones like POTS or GSM/3G in SoftRadio, the phone resource is a common function and shared by all operators like one of the radios)

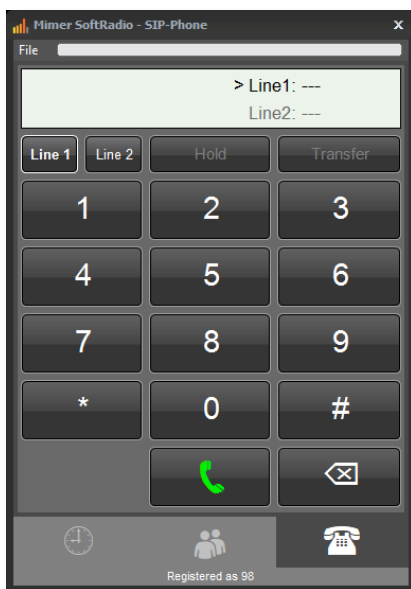
The SIP client also gives you a list of previous calls and a contact list.

6 Using the SIP client

After installation and the settings are done, the client is ready for use. You should now see an extra device panel named “SIP-Phone”, or another name if you have changed the name in settings, in your main SoftRadio GUI. This device panel will show gray/red/green handset symbols instead of the Resend button and the PTT button.

Pushing the name list “SIP-Phone” (or other name if changed in the settings) will open/close the SIP panel in the same way as you open a radios virtual control head.

The green handset key will light up to show that the panel is active. The green and red handset keys on the panel are parallel to the keys on the device panel in the SoftRadio GUI.



Number entry menu

6.1 Receiving a phone call

An incoming call generates a ring tone and blinking green on the name bar in SoftRadio. Answer the call by pushing the key with the green handset symbol.

If you do not want to take the call, you can reject it by pushing the key with the red handset button.

After the conversation is finished, end the call by pushing the key with the red handset.

You do not need to open the SIP-Panel to answer or reject a call.

6.2 Making a phone call

Open the SIP-Panel if it is not already open.

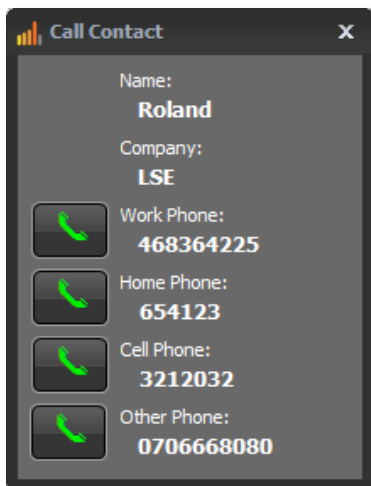
There are different ways you can make a call:

6.2.1 Phone tab.

- Manually enter a number by pressing the number buttons on the panel or entering the numbers from your PC keyboard. When the correct number is entered, press the button with the green handset, or press the enter key on your keyboard.
- You can also use the green handset on the SoftRadio device panel.

6.2.2 Contacts Tab.

- Double-click an entry in your contacts list to call the contact using the defined default number. The default number is set for each contact in the contacts list.
- Press the ⓘ symbol at an entry in your contacts list to open the Contact Card of the entry. Then press the green handset button next to the preferred number.



Contact Card

6.2.3 History Tab.

- Double-click an entry in the call log (history) list.

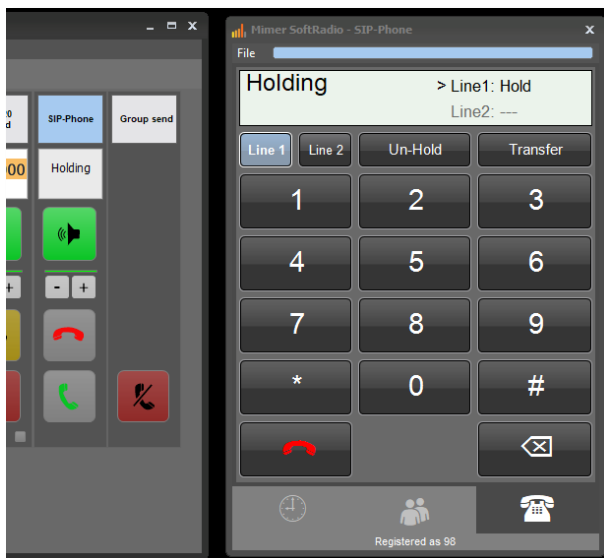
6.3 Placing a call on hold

While in a call you might need to pause the call or need to hand it over to another person. By pressing the “Hold” button your call is put on hold.

You can then make a transfer of the call as described below.

Or you can then select the other line and answer another incoming call or make a new outgoing call.

To cancel the hold state press the button marked “Un-Hold”



Call on hold, marked with light blue colour

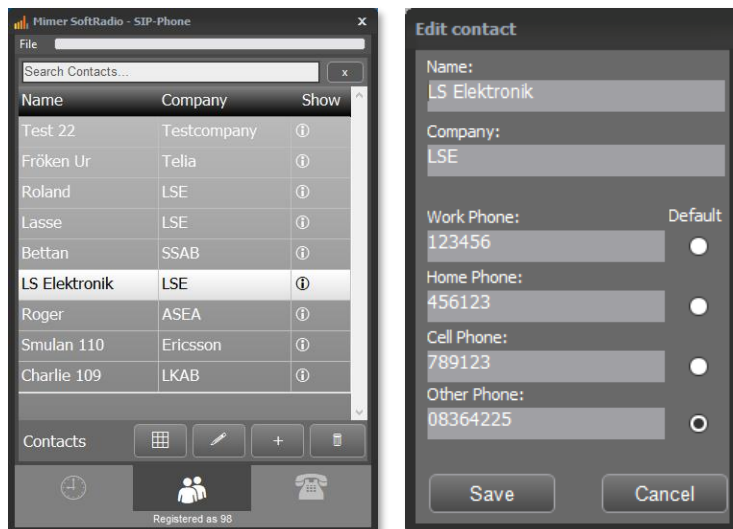
6.4 Transferring a call

You can transfer a call like this:

1. First put the current call on hold by pressing “Hold”.
2. Then manually enter the number of the other person who shall receive the call.
3. Finally press the “Transfer” button.
4. You are now immediately disconnected from the call and the exchange takes care of calling the other person instead.

7 The Contact list

Each entry in the contacts list holds information about name and company for the contact and it can hold several phone numbers. One of the numbers is marked as a default (favourite) number. That number will be used when making a call by double-clicking on the entry in the contacts list.

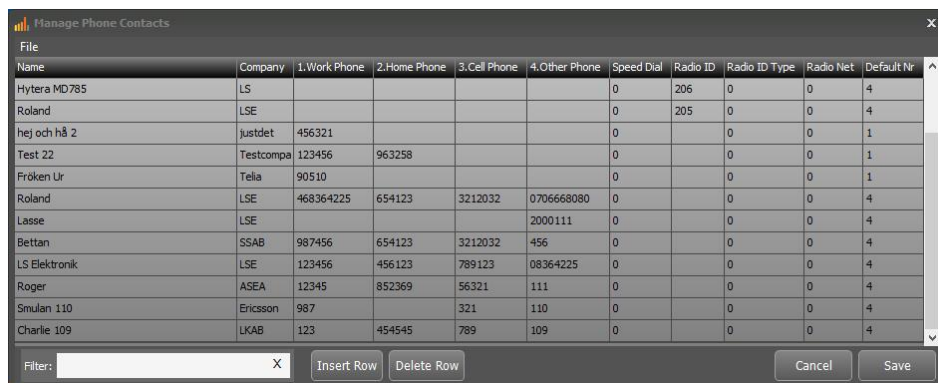


Contact menu and edit contact menu

- To add a contact, simply press the plus sign button.
- To update a contact, select the contact and then press the pen button.
- To delete a contact, select the contact and then press the trash can button.

7.1.1 Manage all contacts

You may also edit your whole contact list. It is brought forward by clicking the key with the “squares” on.



Here you can easily insert and delete rows and update the information.

Don't forget the column to the right “Default Nr”, this sets which of the phone numbers that are to be used when double clicking a contact.

Under “File” there are options to import and export the list. This will be done in Excel-format, so that you can make updates easier in Excel or maybe export a list to another operator PC.

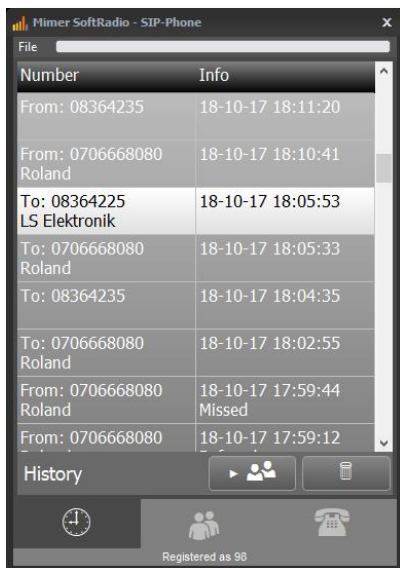
The list is shared with the option for RadioCalls, so there are also columns for RadioID etc.

7.1.2 Default number

The number marked as default will be the number called when double clicking on a contact in the list.

8 The History list

The history list will show both incoming and outgoing phone calls from your dispatcher. It will hold up to 100 entries.



SIP History window

You can redial by double-clicking on an entry in the call log.

To make a new contact in the contacts list based on an entry in the history list, select the entry and then press the button with an arrow pointing on a list. Then add the name and company info in the contacts dialogue.

To delete an entry in the history list, select the entry and then press the trash can button.

9 Optional functions

9.1 Cross-Patching of calls

With the option **Mimer CrossPatch** installed, phone calls can be manually patched together with radio calls.

9.2 Recording of calls

With the server **Mimer VoiceLog** installed in your Mimer SoftRadio system all audio is recorded for both radio calls and phone calls. All recordings are marked with a date and time stamp.

10 Technical problems

On the web pages FAQ there is a section for SIP setup.

www.lse.se/mimer-softradio/fag/#TSIP



Proudly made in Sweden by

LS Elektronik AB

www.lse.se

info@lse.se