



How to set-up and use

Mimer Profiles

Art n:o 3305

Release date Oct 19, 2023

This guide will help with the setup and use of **Mimer Profiles**.

Please also refer to the standard manuals for Mimer SoftRadio found on:

www.lse.se/setup, and the web page www.lse.se/profiles.

Table of contents

1	GENERAL	4
1.1	SYSTEM EXAMPLE.....	4
1.2	SETUP.....	4
2	OPERATOR PC INSTALLATION.....	5
2.1	NEEDED SETUP	5
2.2	SOFTWARE INSTALLATION.....	5
2.3	OPERATOR SETTINGS	5
2.4	LOG IN TO A PROFILE	5
2.5	THE MIMER PROFILES SERVICE.....	5
3	SUPERVISOR PC INSTALLATION	6
3.1	NEEDED SETUP	6
3.2	SOFTWARE INSTALLATION.....	6
3.3	SUPERVISOR SETTINGS	6
4	SETUP THE BASIC CONFIGURATION.....	7
4.1	CONTROL ROOM	7
4.1.1	<i>Selecting the Control Room</i>	<i>7</i>
4.1.2	<i>Copying files between Control Rooms</i>	<i>7</i>
4.1.3	<i>What happens if a Control Room is missing files?.....</i>	<i>7</i>
4.2	SETUP OF CONSOLES	8
4.2.1	<i>Update or change the Console information</i>	<i>8</i>
4.2.2	<i>Save the information</i>	<i>8</i>
4.2.3	<i>Upload config to Console.....</i>	<i>9</i>
4.2.4	<i>Save Config to Folder.....</i>	<i>9</i>
4.2.5	<i>What happens if a Profile has been deleted?.....</i>	<i>9</i>
4.3	SETUP OF PROFILES	9
4.3.1	<i>Update or change the Profile information</i>	<i>10</i>
4.3.2	<i>What happens if an Operator or Connection has been deleted?</i>	<i>10</i>
4.4	SETUP OF THE OPERATORS.....	11
4.4.1	<i>Update or change the Operator information</i>	<i>11</i>
4.5	SETUP OF "MIMER SETTINGS"	12
4.6	SETUP OF "MIMER CONNECTIONS"	13
4.6.1	<i>Add a device</i>	<i>13</i>
4.6.2	<i>Edit a device</i>	<i>13</i>

4.6.3	<i>Import a saved file.....</i>	<i>13</i>
5	UPLOAD A PROFILE TO A CONSOLE	14
5.1.1	<i>Local Admin Password.....</i>	<i>14</i>
5.1.2	<i>Remote Config Password.....</i>	<i>14</i>
5.2	CHANGE REMOTE SETTINGS.....	14
6	LOGGING ON TO A PROFILE.....	16
6.1	SETTINGS IN THE OPERATOR CONSOLE.....	16
6.1.1	<i>Admin settings in SoftRadio</i>	<i>16</i>
6.1.2	<i>Settings in Connection Setup.....</i>	<i>16</i>
6.2	CHANGING PROFILE ON THE CONSOLE	16
7	BACKUP OR CLONE.....	17

1 General

Mimer SoftRadio is a dispatch system that handles radios, intercoms and phones from a common PC GUI using IP as connection between all nodes in the system.

Radios are connected to the IP network through the use of a hardware Network Interfaces at the radio units. Also, other products than radios can be connected like PA-systems, voice recorders etc.

In the standard SoftRadio system, each operator sets up the devices that he would like to use, as well as the keys and functions in the SoftRadio GUI.

For customers that have many operator positions, Consoles, as well as many operators that are not always at the same Console doing the same job, we have brought forward the “Profiles” add-on, that allows a centralised setup of the operator positions.

1.1 System example



Picture from Seafar

Typical use is a large central with many operator positions, where the operators can sit dynamically each day, and do different tasks. The task at one desk might also change between day and night shift.

1.2 Setup

A supervisor can pre configure Profiles for the operators to use. Each profile will include the radios and other devices that the operator needs for the task at hand. The same profile can be available at many Consoles, so that the operator can work from any desk.

2 Operator PC Installation

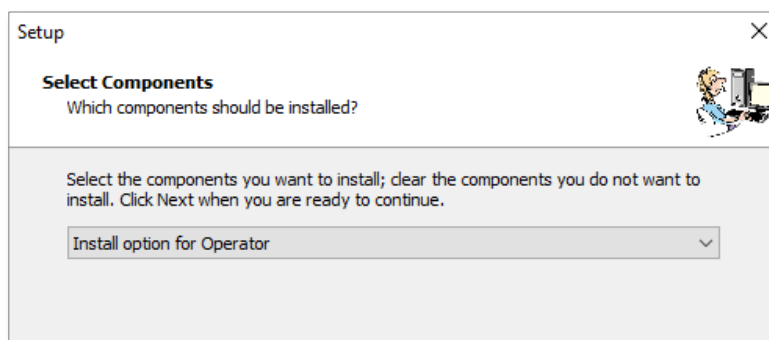
2.1 Needed setup

Each operator PC shall already be installed with **Mimer SoftRadio XL** to be able to handle the Profiles.

SoftRadio needs to be version 4.0.25.0, or later. Note that the operator and the supervisor need to have the same version.

2.2 Software installation

Install the Profiles option from the supplied USB stick or download. Restart SoftRadio XL. This will activate Profiles in the operator software.



Select “Install option for Operator”

2.3 Operator settings

The Profiles option does not need any additional local settings for an Operator installation. They are all done remotely from a Supervisor PC instead, as described below.

2.4 Log in to a Profile

Further down in the manual the log in for each profile is described.

2.5 The Mimer Profiles Service

In order to allow remote upload of profiles configuration to an Operator computer, the Profiles Option will install a windows service called the Mimer Profiles service.

This service listens to connections on a TCP port (port 36042 by default but this can be changed remotely by the Profiles Configuration tool) from the Supervisor for receiving profiles upload.

The process for uploading profiles or changing the remote upload setting is described further below.

3 Supervisor PC Installation

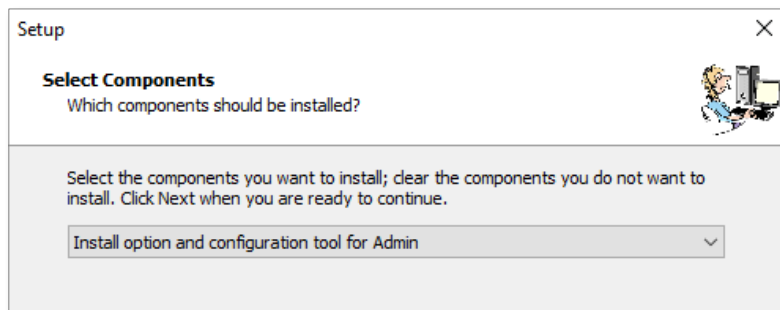
3.1 Needed setup

The supervisor PC shall already be installed with **Mimer SoftRadio XL** to be able to handle the Profiles.

SoftRadio needs to be version 4.0.25.0, or later. Note that the operator and the supervisor need to have the same version.

3.2 Software installation

Install the Profiles option with the configuration tool for Admin, from the supplied USB stick or download. Restart SoftRadio XL. This will activate Profiles in the operator software.



Select “Install option and configuration tool for Admin”

You will now get a new program and the icon “Mimer Profiles Configurator”.

3.3 Supervisor settings

Open Mimer Profiles Configurator and go through the Basic Setup steps described below.

When opening the Configurator you will be asked for the default folder for saving the information. Select a folder or just click “Select Folder”.

4 Setup the basic configuration

In the Profiles Configurator a lot of information is entered only once, at system setup, and is only changed if there are new radios or new work consoles added to the system.

The daily work is done mainly in the Profiles and Consoles tabs.

4.1 Control Room

The Profiles Configurator always has an active working folder. This folder is called a Control Room.

All the Consoles, Profiles, etc. you create will be saved as individual files to the Control Room folder.

4.1.1 *Selecting the Control Room*

When you start the software a Select Folder dialog will open up prompting you to pick a Control Room folder. You can pick an empty folder if you do not already have a Control Room.

You can start on a new Control Room, open another existing one or export a copy of the current control room to a new folder using the Control Room menu. The folder name of your current open Control Room is written in the title bar of the application.

4.1.2 *Copying files between Control Rooms*

You can easily copy any of the files in the Control Room folder between different Control Room folders to make connections or profiles usable in other Control Room configurations. Keep in mind that if you copy a Profile then you must also copy the files for every connection and operator that is configured in the Profile to get the exact same configuration in the new control room.

If the Configuration tool is open when you copy files into the Control Room folder then you will need to reopen the Control Room, or restart the program, for the new files to show up.

4.1.3 *What happens if a Control Room is missing files?*

If you for example copy a Profile file from one Control Room folder to another but not all of the Connection files that Profile uses then the list of Connections for that Profile will include an entry that describes the missing file by name, such as "Connection-Radio 1"

If you attempt to upload a Console configuration that contains such missing definitions then they will simply be skipped and not become available on the operator computer.

For example, a Profile that is missing some of its connection files will still be uploaded, but those connections will not be in SoftRadio when the operator

runs it using that profile.

If you then copy over the missing file from the original control room, or create a new entry with the same name (for example a new connection named Radio 1) then the profile will be able to use that file.

Any time you copy any files you need to make sure to reopen the Control Room to load the new files.

4.2 Setup of Consoles

A “Console” is a work station where an operator can log in and work with the SoftRadio system. Also called SoftRadio Client.

Each available Console needs to be specified in the configurator.

Open the tab “Consoles”.

Mimer Profiles Configuration (SoftRadio version: softradio 4.0.25.0)

Control Room

Consoles Profiles Operators Mimer Settings Mimer Connections

Console configurations

East office, OP1
East office, OP2

Console Name: East office, OP2

Mimer Zone: 0

Mimer ID: 56

IP Address:

Port: 36042

Local Admin Password: admin

Remote Config Password: Mimer123

Assigned Profiles

Assigned	Profile Name
<input type="checkbox"/>	Day Time
<input checked="" type="checkbox"/>	Night Time

Add

Duplicate Selected

Delete Selected

Upload config to Console

Save Config to Folder

Save Changes

4.2.1 Update or change the Console information

Add or duplicate and give each console a name. You need one Console configuration for each physical work station in the system.

Then assign ID's, IP's etc for each Console.

When the profiles are done you can assign profiles to each Console and you can upload the settings to each Console. Further described below.

4.2.2 Save the information

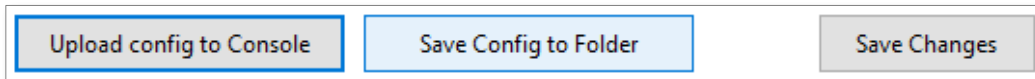
When done with the settings for a Console, press “Save Changes” so that you don't accidentally lose any information.

4.2.3 Upload config to Console

After preparing the information that each Console shall have, this needs to be uploaded to the Consoles.

This is done by pressing the key “Upload config to Console” and using the Upload dialog to remotely connect to the Operator PC, to upload the console configuration files. This dialog is described further in section 5.

Repeat the step for each Console in the system.



Later if/when changes are needed, you simply write over the old information with new settings, by uploading or manually copying over the files again.

4.2.4 Save Config to Folder

You can also use the “Save Config to Folder” key. This will instead write the configuration files to the specified folder, which can then be manually copied to the Operator PC. The contents of the folder you saved to shall then be moved into “C:\users\public\documents\Mimer\Profiles” on the Operator PC. Keep in mind that these files also contain the Operator ID which needs to be unique for every operator PC.

So you cannot copy the same config folder to multiple Operator PCs. You will need to save the config for each console to separate folders and copy them to their respective Operator PCs to ensure they get unique Operator IDs.

4.2.5 What happens if a Profile has been deleted?

If a Profile has been assigned to a Console but is then deleted (either from the configuration tool directly, or by removing the Profile file from the Control Room folder) then the missing Profile will still be listed, but displayed with “Profile-” before the name.

You can unassign them and press Save Changes and they will disappear the next time you select this Console from the list again. Alternatively, you can create a new Profile the same name (but not including the “Profile-” part of the name) and the Console will use this new profile instead.

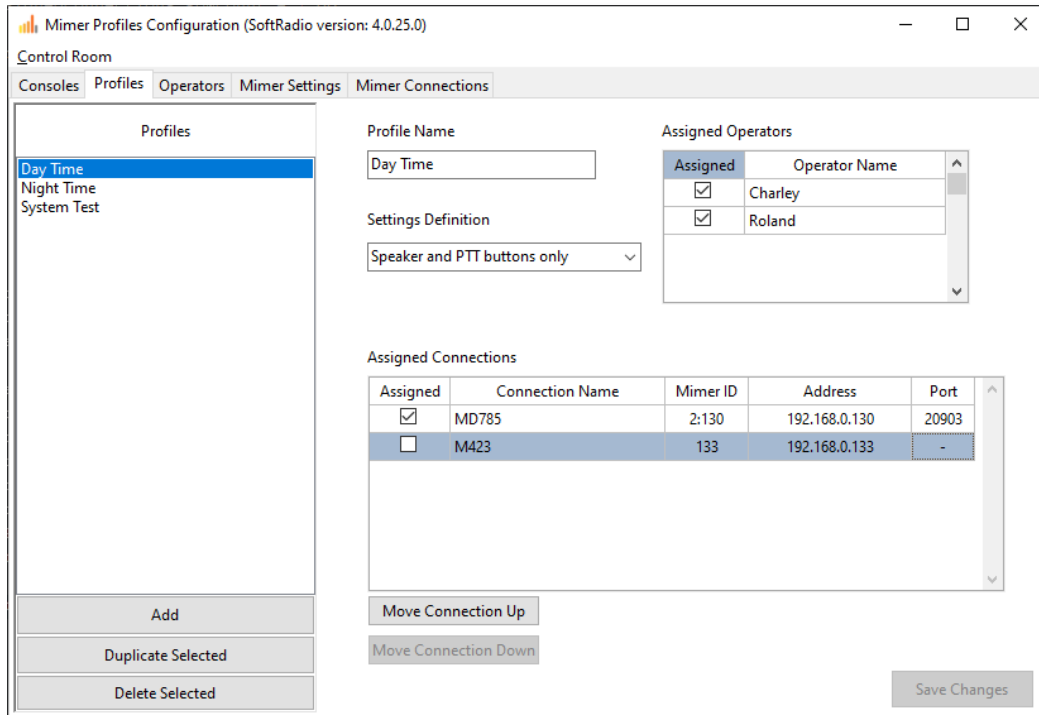
4.3 Setup of Profiles

A “Profile” has a set of devices and SoftRadio functions set to it. You can for example have a special profile for night time watch or one profile for each remote-controlled ship, or all radios in a geographic area.

You can have as many profiles as you need.

You also assign which operators that shall be assigned to each profile. Only assigned operators will be able to log on to the profile.

When this is done you decide what profiles each Console will have available. When an operator logs on to a Console, he will get the question which profile to use.



4.3.1 Update or change the Profile information

Add or duplicate and give each Profile a name. You need one Profile configuration for each task that will be done.

Then assign Operators (that are allowed to use this profile), Radios or other devices that shall be used and the Settings Definition.

The order of the assigned Connections in the Profile configuration is the order that will be used by the SoftRadio client when an Operator uses that profile. You can change this order by selecting a row and pressing the buttons to move the Connection up or down.

When the profiles are done you can, in the Consoles tab, assign profiles to each Console and you can upload the settings to each Console. Further described below.

4.3.2 What happens if an Operator or Connection has been deleted?

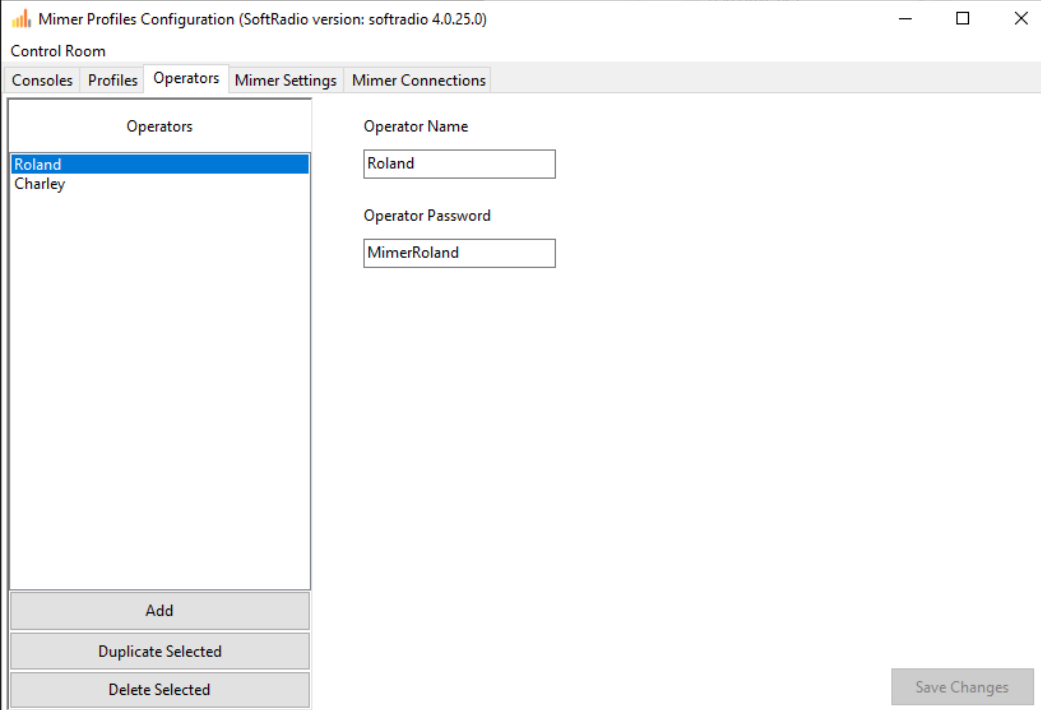
If an Operator or Connection has been assigned to a profile but is then deleted (either from the configuration tool directly, or by removing the Operator- or Connection-file from the Control Room folder) then the missing Operator- or Connection-file will still be shown here, but displayed with "Operator-

” or “Connection-” before the name. You can unassign them and press Save Changes and they will disappear the next time you select this Profile from the list again. Alternatively, you can create a new Operator or Connection with the same name (but not including the “Operator-” or “Connection-” part of the name) and the Profile will use this new one instead.

4.4 Setup of the Operators

An “Operator” is the actual person using the system. You need to setup the names and login of each user.

When this is done you assign the operators different profiles, this is done on the Profiles tab. When an operator logs on to a console, he will get the question which profile to use.



The screenshot shows the 'Mimer Profiles Configuration' window (SoftRadio version: softradio 4.0.25.0). The 'Operators' tab is selected. On the left, a list of operators includes 'Roland' (highlighted) and 'Charley'. Below the list are buttons for 'Add', 'Duplicate Selected', and 'Delete Selected'. On the right, the 'Operator Name' field contains 'Roland' and the 'Operator Password' field contains 'MimerRoland'. A 'Save Changes' button is located at the bottom right.

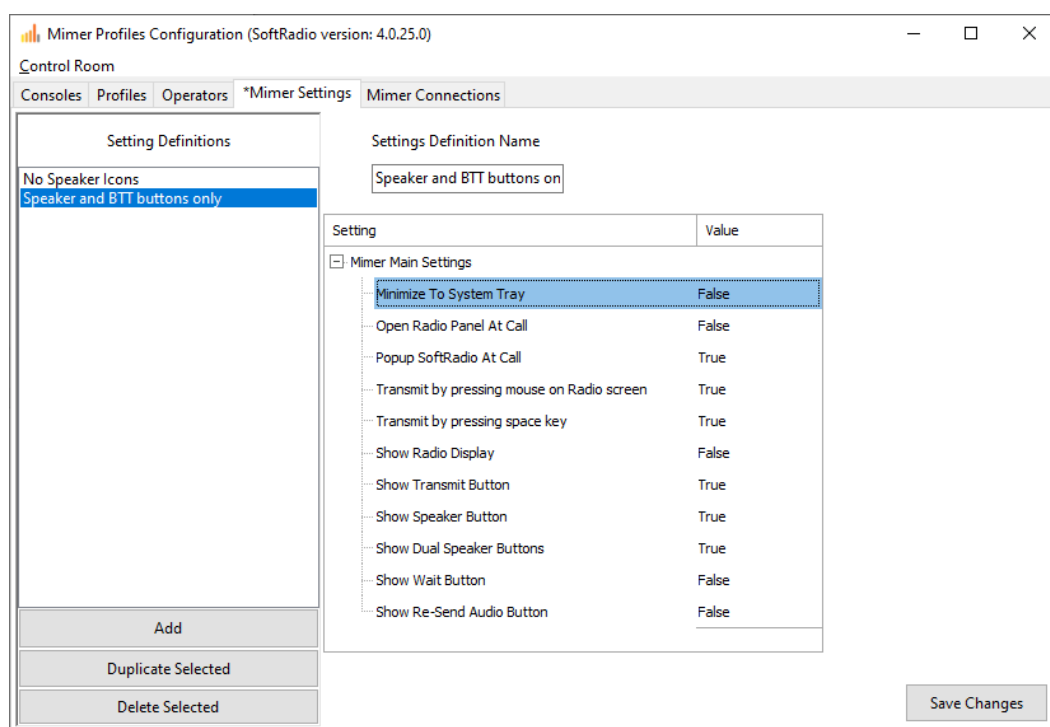
4.4.1 Update or change the Operator information

Add or duplicate operators until all are entered.

Then assign a password for each operator to use and push “Save Changes”.

4.5 Setup of “Mimer Settings”

It is possible to configure some Mimer SoftRadio Settings to be profile-specific.

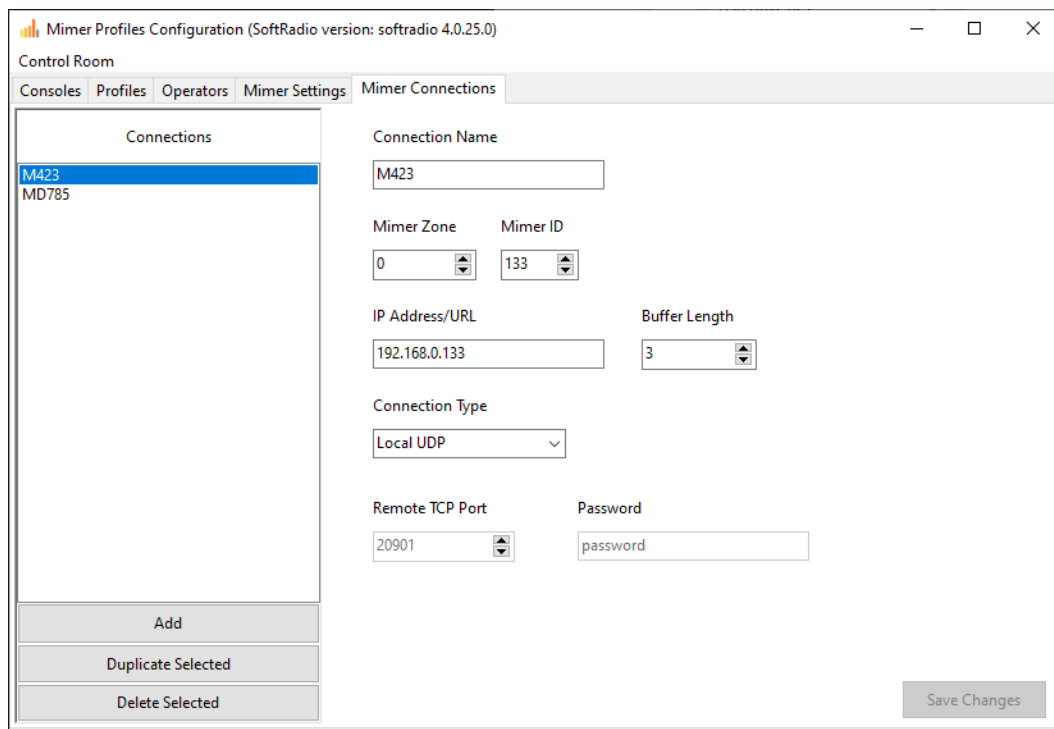


These settings definitions will override any settings configured using the Admin profile on the Operator PC and are assigned to each profile.

4.6 Setup of “Mimer Connections”

In Mimer Connections a device can be a network interface at a radio, a VoiceLog server or other type of interface that the operator needs to work with.

The setup of these is similar to what you do in Connection Setup in the operator PC.



4.6.1 Add a device

Use the Add or Duplicate keys to add a new device to the system.

4.6.2 Edit a device

Enter the information for each device in the same manner as you would in Connection Setup in the standard operator software.

Local devices use “Local UDP” and remote devices use “Remote TCP”, in the same way as usual. Remember that local and remote refers to the Console PC where the settings will be used, not to the Admin PC that this setting is done from. Operator Consoles at different sites might need to have different device settings. This mean that you might need to make two or more different setups for each device.

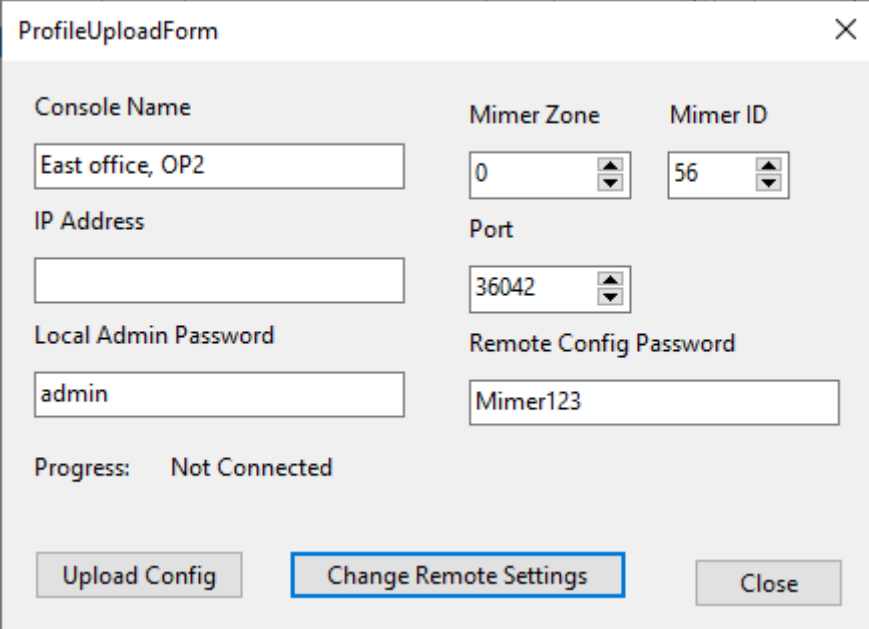
4.6.3 Import a saved file

In a later release it will also be possible to import connection settings from an operator PC.

5 Upload a Profile to a Console

When done, the supervisor sends out the profiles to the Consoles that shall have them available.

This is done in the “Consoles tab. Push “Upload config to Console”.



The screenshot shows a dialog box titled "ProfileUploadForm" with a close button (X) in the top right corner. The form contains several input fields and buttons:

- Console Name:** A text box containing "East office, OP2".
- Mimer Zone:** A spinner box set to "0".
- Mimer ID:** A spinner box set to "56".
- IP Address:** An empty text box.
- Port:** A spinner box set to "36042".
- Local Admin Password:** A text box containing "admin".
- Remote Config Password:** A text box containing "Mimer123".
- Progress:** A label showing "Not Connected".
- Buttons:** "Upload Config", "Change Remote Settings" (highlighted with a blue border), and "Close".

Upload form

If needed, change the information and then push “Upload Config”.

If you wish to have the same configuration on multiple Operator computers then you can change the Mimer ID and IP Address here accordingly to quickly upload it to different computers while ensuring they still get unique Operator Mimer IDs.

5.1.1 Local Admin Password

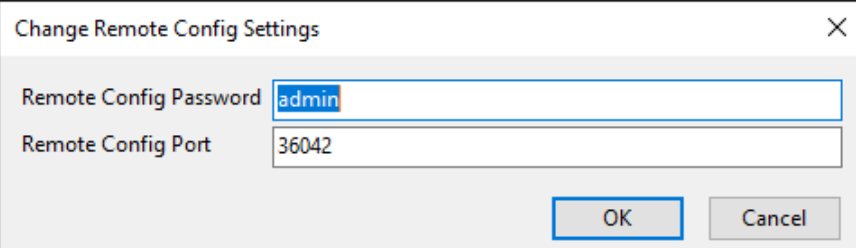
The Local Admin Password is the password used when an administrator logs on to the operator Console with the Admin operator. Which has access to every profile on the Console, as well as the special Admin profile which can be used to set the standard Mimer SoftRadio Settings that will be shared among all Profiles.

5.1.2 Remote Config Password

The Remote Config Password is the password used by the administrator when uploading Profiles to the operator Console.

5.2 Change Remote Settings

To set a new password or a new TCP port for remotely uploading configurations in the Console you can use the “Change Remote Settings” menu.

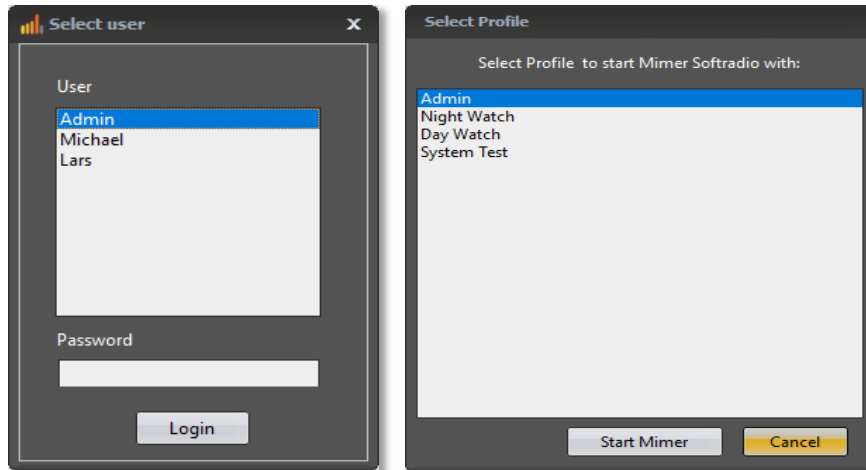


A screenshot of a Windows-style dialog box titled "Change Remote Config Settings". The dialog has a close button (X) in the top right corner. It contains two text input fields: "Remote Config Password" with the value "admin" and "Remote Config Port" with the value "36042". At the bottom right, there are two buttons: "OK" and "Cancel".

Keep in mind that after changing these settings and returning to the main profile form, these new values will have been copied out into the main form and need to be saved using the Save Changes button.

6 Logging on to a Profile

When the operator logs on to the Console, he will be asked which profile to use. He will need to use the password that has been entered in the Profiles Configuration.



There is also a possibility to log on as an administrator. This will give some more setting options, see below.

When logged on, the operator can use the devices assigned to the profile.

6.1 Settings in the operator Console

The usual settings for connecting to the devices in “Connection Setup” will not be used. The Profile settings will override them. Also, the standard Settings tab and the Style tab are blocked for user settings when using Profiles.

6.1.1 Admin settings in SoftRadio

Logging in to the Console as Admin and selecting the Admin profile will give access to the Settings and the Style tabs. The settings configured there will be the default settings used by all user profiles.

For example, if you have an external PTT key, you need to specify the COM-port that it is connected to, in this Admin mode.

6.1.2 Settings in Connection Setup

There are also settings in Connection Setup that needs to be done. These will work for all Profiles on the Console.

For example, the selection of audio devices.

6.2 Changing Profile on the Console

To change between Profiles on the Console, SoftRadio needs to be closed and restarted.

7 Backup or Clone

Separate operator profiles and/or the whole control room setup, can be exported for back up purposes, or for setting up a separate new control room somewhere else.

There is an Export function under the headline “Control Room”. Here you can also start a new Control Room from scratch.

Additionally, all the files in the Control Room folder can be moved or copied and pasted between Control Room folders freely. You need to restart the Profiles Configuration tool or open the Control Room again from the menu to load in the new files.



Proudly made in Sweden by

LS Elektronik AB

www.lse.se

mimer@softradio.se