

Cable Kit 3205 Interface 3009/20

Icom IC-F5060-Series radios

Remote functionality

This cable kit will together with the Mimer Network Interface give remote control of the radios audio and PTT functions.

Also the channel and the zone can be set remotely from SoftRadio.

Radio programming

The RS232-port needs to be set for 19200Baud and PC CMD V2, see picture on following pages.

Some versions of the radio needs to be modified in order for the modulation input through the accessory connector to work. See Icom service bulletin, available on our web page.

Interface programming

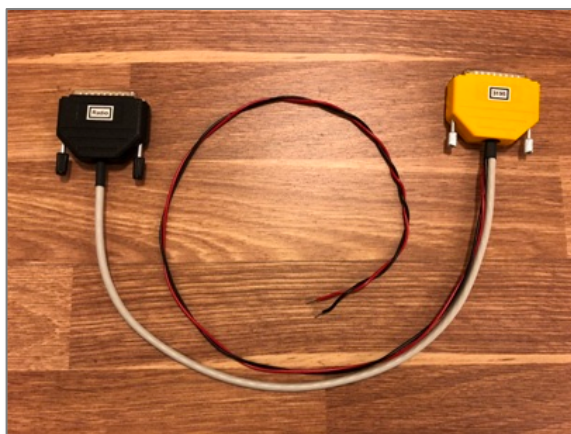
The Network Interface needs to be setup correctly in order for the channels to be displayed correct. See the following pages.

Cable Kit

The red and black wires shall be connected to 12VDC, red is positive.

The network interface consumes max 0,3A.

Please note that the black connector marked "Radio" shall be connected to the radio and the yellow connector marked "3205" shall be connected to the network interface.



Cable Kit 3205

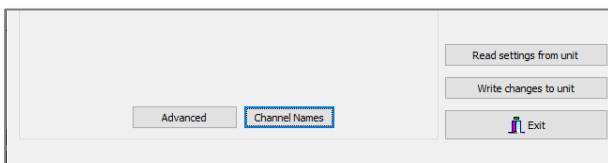
Channel name setup

The radio does not report the channel names, only a technical number, to external devices. For this reason it is important to make a list of channel names and zones and save it in the interface.

The list needs to be an exact copy of the list in the radio. If the programming of a channel, in the future, is changed in the radio, it also needs to be updated in the interface.

When all is correct, the Virtual Control Head in SoftRadio will show the name of the channel.

Click the “Channel Names” button in “Interface Setup”.



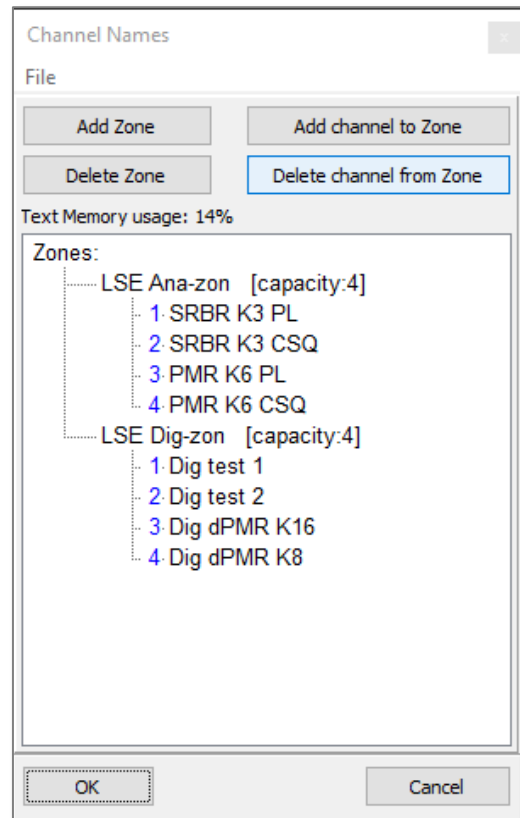
Add the number of zones and channels in each zone exactly as it is programmed in the radio. **It is important that you have the exact same number of zones and channels.**

Name the channels as they are in the radio, or if preferred, with other names. All ASCII letters can be used.

Please note that there is a maximum size of the total amount of channel names. Therefore there is a “Text memory usage” percent counter. If you reach the limit, you will need to shorten some of the texts.

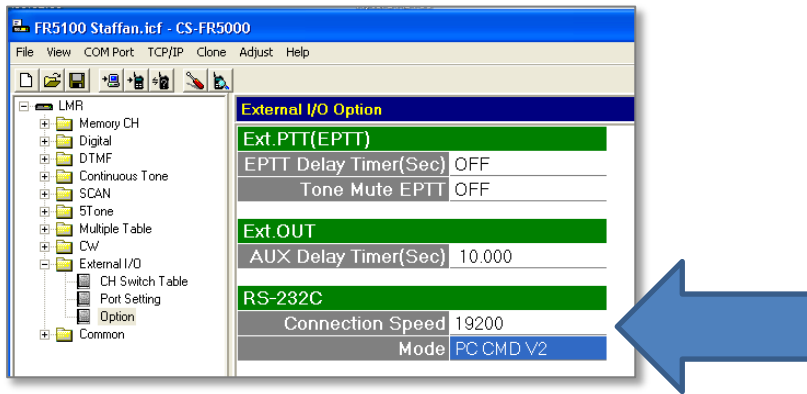
The memory size was increased from interface firmware 6.084, this can be used on network interfaces with serial numbers 3000 and up.

Push OK and then “Write changes to unit”.

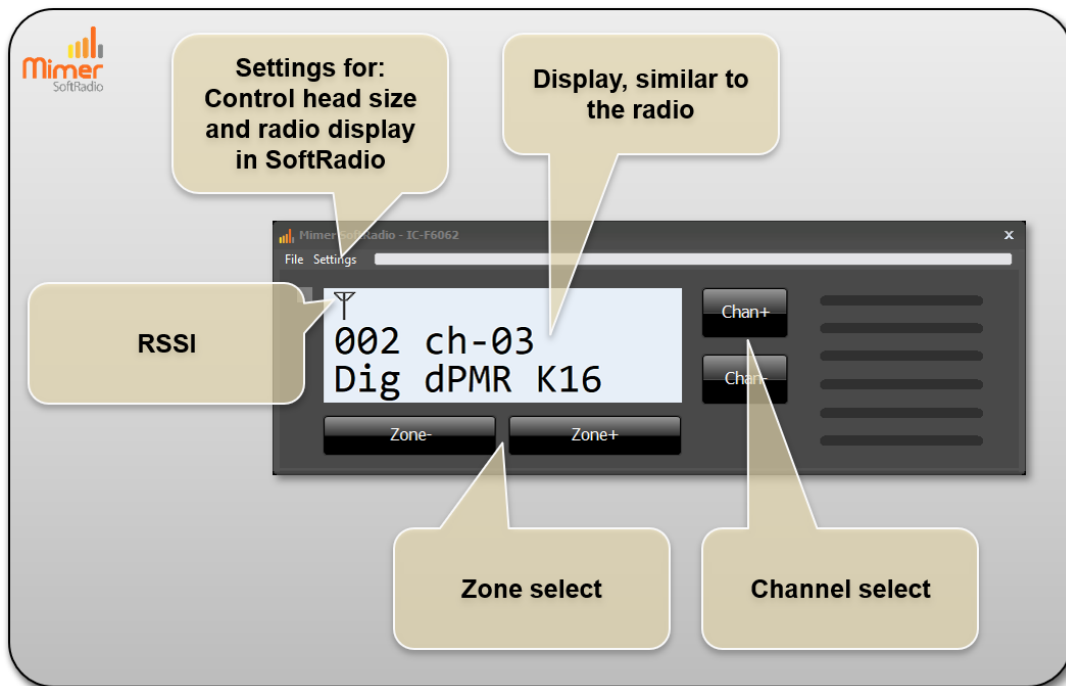


Radio Setup

RS-232 in the radio CPS.



Functions on the Virtual Control Head



Showing the ID of a transmitting radio, during reception, when used in digital mode.