



Connecting radios all over the world



Mimer Parts List

Contents

Contents.....	2
Mimer SoftRadio	3
Basic Operator Software	4
Extended Operator Software	5
NetworkInterface.....	6
NetworkInterface LE	10
NetworkInterface Phones and Intercom	12
NetworkInterface PA & Foghorn	12
Virtual NetworkInterface Jotron	13
Virtual NetworkInterface Kairos.....	13
Mimer NetworkRepeater	14
Mimer VoiceLog	15
Mimer RTP Gateway	15
Mimer InfoServer	16
Mimer MapView	16
Audio accessories.....	17
Installation Accessories	20
Dispatcher PC's	22
Mimer X-Link MK2	24
Mimer SoftLine	26

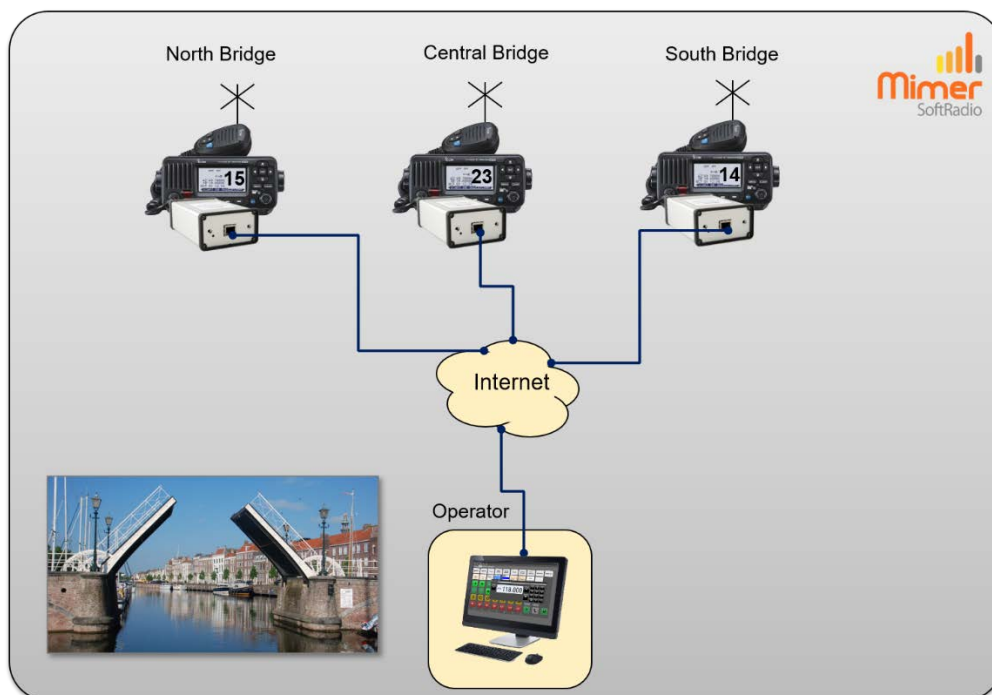
Mimer SoftRadio

With SoftRadio you can remote control your two way radios from any Windows PC. The radios are connected through ordinary IP connections, either local in a LAN or remote over WAN or the Internet.

Many radios can be operated from a virtual control head, giving the operator the feeling of sitting in front of the radio although the radio might be in another town.

Each operator can also handle other devices such as phones and intercoms. And each device can be used by many operators in parallel. You can mix different types of radios and systems, both analogue and digital.

To make the system complete there are many options and accessories, for example an audio recorder and a GPS positioning system.



Example of an operator working with three marine radios at bridges along a river, so that the ships can ask for the bridge to be opened.

Read more on: www.lse.se

And about user cases on: www.lse.se/users

At the end of the price book you will also find the products **X-Link** and **SoftLine**.

We reserve the right for possible misprints.

Basic Operator Software



Features

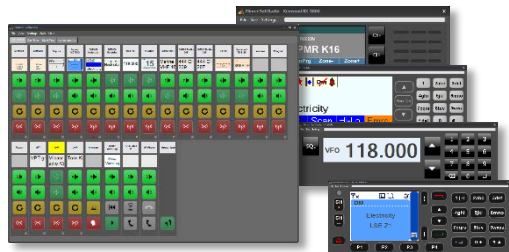
- License for one PC
- Connects up to eight devices
- Runs on Windows 10 & 11
- Controls PTT, Speakers and more
- Handles all types of radios, Phones and Intercom
- Includes Virtual Control Heads

Part number	Description	Price/PC
2855	Mimer SoftRadio software license	

Options	Add-ons to the basic software	Price/PC
2867	CrossPatch Links two or more radios together through Mimer SoftRadio	
3013	Custom Functions Panel Easy selection of audio devices and a group send function	
3046	RadioCalls Gives a contact list and pre-programmed text messages * Displays the latest incoming calls (good when using PTT-ID) *	
3115	Marine Calls Makes it possible to receive and transmit DSC calls and to receive ATIS calls, also includes a CallLog function	
3151	ATIS Export Sends the decoded ATIS message to third party software	
3154	SIP Connect Gives the operator a SIP device panel	
3154/02	Multi SIP Connect Gives the operator multiple SIP device panels	
2887/03	Tone PTT Control For base station systems that use single tone for PTT	
2887/04	External Alarm Gives a logical output in the PC Com-port at selective calls	
3103	Diversity (voting) Selects audio from the best receiver when connecting more than one receiver on the same radio channel *	
3289	Mimer Kiosk A setup script to run the operator PC in "Kiosk mode" Sold together with preprogramed PC's	

* Works only on specific radios, please refer to web or ask

Extended Operator Software



Features

- License for one PC
- Connects up to 30 devices
- Runs on Windows 10 & 11
- Controls PTT, Speakers and more
- Handles all types of radios, Phones and Intercom
- Includes Virtual Control Heads
- Extra options

Part number	Description	Price/PC
2855/30	Mimer SoftRadio XL software license	

Options for XL	Add-ons to the extended software	Price/PC
All options for the standard SoftRadio version (see page 4) also work with the XL version. In addition the following options are available to XL: More info on www.lse.se/xl		
3299	Multi Speakers (formerly known as Quad Speakers) Let's you direct the audio into eight speakers (instead of two)	
3049	Multiple Hotkeys Gives the possibility to dedicate separate keyboard keys to each radios PTT, volume and speaker on/off	
3236	Advanced Audio Messages Gives the possibility to record and store multiple audio messages that can be used as manual or automatic answers to calls	
3251	Auto Rx Response Add on to "3236-Advanced Audio Messages" Sends an audio message after audio reception	
3305	Profiles Gives the operator PC many profiles, editable by a supervisor <i>Only sold for systems with 10 or more operators</i>	
3306	Zone Extensions Expands the number of nodes a SoftRadio system can handle	
3298	User Status Reports Background software. Sends operator info to the InfoServer.	
3178	Damm Tetraflex Connects directly into the Damm infrastructure w/o a donor radio. You can use as many talk groups as you like. www.lse.se/damm	

NetworkInterface

Motorola Radios with
Virtual Control Heads



Features

- Connects to radio audio and to radio remote control
- Connects to 10/100base IP (RJ45)
- Room for option boards
- Details on each radios webpage

www.lse.se/radios

Part number	Description	Price
3009/16	Motorola MotoTrbo DM3600/3601 and DM4600/4601 *	
3022/02	Cable Kit	
3009/24	Motorola MTM5200 / MTM5400	
3043	Cable Kit MTM5200 / MTM5400 back port	
3043/02	As above plus emergency trigger PIN23	
3009/65	Motorola MTM5500 / MTM5400 w. Expansion Head port	
3127	Cable Kit MTM5500 / MTM5400 w. Expansion Head port	
3009/04	Motorola MTM700/800 (not MTM800E)	
3019	Cable Kit	
3009/03	Motorola GM-series *	
3009/25	Motorola CDM1250 *	
3016	Cable Kit	

Options		Price
2864	Tone Decoder Module Decoder in the Network Interface for CCIR/EEA/ZWEI etc.	
3095	FSK Module Enc/Decoder in the Network Interface for FSK, used for ATIS and DSC	
3102	RSSI Input Module for 3009/03 Takes the RSSI-signal from Motorola GM-series radios into the Mimer diversity system	
3323	Lower bandwidth for the audio Tuneable in two steps, se web page for details	

More Motorola interfaces w/o Virtual Control Head available on page 10.

Mounting bracket available on page 21

* Some Motorola radios have other names outside of Europe, please see webpages for details.

NetworkInterface

Radios with Virtual Control Heads



Features

- Connects to radio audio and to radio remote control
- Connects to 10/100base IP (RJ45)
- Room for option boards
- Details on each radio types webpage

www.lse.se/radios

Part number	Description	Price
3009/49	Sepura SRG 3900 w. control head (shows colour display)	
3224	Cable Kit	
3009/08	Sepura SRM/SRG 2000/3500/3900 (shows B/W display)	
3015	Cable Kit	
3009/55	Hytera MD782/MD785/MD788*	
3307	Cable Kit	
3009/29	Kenwood NX-720/820-series and more	
3116	Cable Kit (DB15 High dense)	
3009/33	Kenwood TK-7360/8360-series and more	
3116	Cable Kit (DB15 High dense)	
3009/30	Kenwood TK-718X/818X-series and more	
3035/02	Cable Kit (DB25)	
3009/38	Kenwood NX-5000-series	
3035/02	Cable Kit (DB25)	
3009/31	Icom IC-M423/M424* & IC-M400BB, Marine VHF radio	
3126/02	Cable Kit	
3009/46	Icom IC-M506, Marine VHF radio	
3126	Cable Kit	
3009/42	Icom IC-A120, Airband radio	
3166/02	Cable Kit	
3009/20	Icom IC-F5060-series and more	
3205	Cable Kit 25PIN back connector	

The list continues on the next page.

Part number	Description	Price
3009/48	Icom IC-F5400/6400-series	
3243	Cable Kit	
3009/51	Icom IC-FR5000/6000-series base stations	
3247	Cable Kit 25PIN back connector	
3009/45	Jotron TR7750 Airband	
3009/37	Jotron TR7750C Marine band	
3179	Cable Kit, full radio	
3268	Cable Kit, receiver only (RA7203)	
3009/43	Jotron TR7550 Airband w. connection through 2-wire line	
3214	Cable Kit	
3009/01	Ericsson Aurora / Niro TRX3001	
3025	Cable Kit	
3009/47	TP7000 / TP929M	
3227	Cable Kit	
3009/56	Sailor 6222 / 6248	
3092	Cable Kit	
Options		Price
2864	Tone Decoder Module Decoder in the Network Interface for CCIR/EEA/ZWEI etc.	
3095	FSK Module Enc/Decoder in the Network Interface for FSK, used for ATIS and DSC	
3323	Lower bandwidth for the audio Tuneable in two steps, se web page for details	

Mounting bracket available on page 21.

* Some radios have other names outside of Europe, please see webpages for details.

NetworkInterface

Radios without
Virtual Control Heads



Features

- Connects to E&M + PTT
- Connects to 10/100base IP (RJ45)
- Versions with line transformers available
- Room for option boards
- I/O ports available
- Duplex audio possible (except on 3009/07)

www.lse.se/universal

Part number	Description	Price
3009/17	Network Interface with Generic radio connection, Mic level + Low AF output + PTT. Tuned for Motorola radios	
	Use the same cable kits as for the LE-Interface 3130, on page 10	
3009/09	Network Interface with Generic radio connection, mic level + speaker level + PTT	
	Use the same cable kits as for the LE-Interface 3130, on page 10	
3009/00	Network Interface with 6-wire, line level in/out -10dB + separate PTT (transistor to ground)	
3038	Cable Kit, generic with open end cables, 6-wire	
3038/02	Cable Kit, generic with open end cables, 6-wire + SQ input	
3009/54	Network Interface with 6-wire, line level in/out -10dB + separate PTT (relay closure)	
3301	Cable Kit, generic with open end cables, 6-wire	
3009/22	Network Interface with 4-wire, line level in/out -10dB, PTT through closure of the Tx-line	
3033	Cable Kit, generic with open end cables, 4-wire	
3033/02	Cable Kit, generic with open end cables, 4-wire w. I/O In/Out	
3009/07	Network Interface with 2-wire line, line level in/out -10dB, PTT via DC (or AC through SoftRadio option 2887/03)	
3032	Cable Kit, generic with open end cables, 2-wire	
3009/53	Network Interface without audio I/O's, relay output, alarm input (Used for NDB and more)	
3300	Cable Kit, power and I/O	
3009/58	Network Interface for connection to a table top microphone with built in speaker and PTT	
	Suitable microphone 3110/07 on page 18	

Options		Price
2864	Tone Decoder Module Decoder in the Network Interface for CCIR/EEA/ZWEI etc.	
3095	FSK Module Enc/Decoder in the Network Interface for FSK, used for ATIS and DSC	
3323	Lower bandwidth for the audio Tuneable in two steps, se web page for details	

NetworkInterface LE

Radios without
Virtual Control Heads



Features

- Connects to E&M + PTT
- Connects to 10/100base IP (RJ45)
- Cannot be fitted with option boards
- Cannot give duplex audio
- Optionally delivered in the standard large silver coloured* interface box

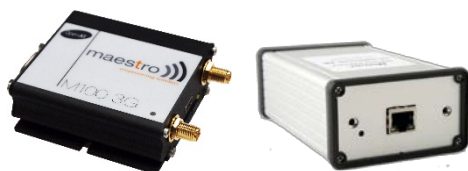
www.lse.se/universal

Mounting bracket available on page 21

Part number	Description	Price
3130	Network Interface with Generic radio connection, mic level + speaker level + PTT (Black box)	
3130/03	Network Interface with Generic radio connection, mic level + speaker level + PTT (Silver box*)	
3018	Cable Kit, generic with open end cables (for 3009/09)	
3018/02	Cable Kit, generic with open end cables (for 3130)	
3021/02	Cable Kit, Motorola CM with 16 pin back port	
3021	Cable Kit, Motorola GM/DM1000/2000 with 20 pin back port	
3138	Cable Kit, Motorola DM3000/4000 with 26 pin back port	
3026	Cable Kit, Motorola MTM5400	
3316	Cable Kit, Motorola MTM800/MTM800E	
3255	Cable Kit, Motorola SLR5000 Base station	
3260	Cable Kit, Motorola SL1600 / TLK100	
3320	Cable Kit, Motorola MTP850S	
3321	Cable Kit, Motorola MXP600	
3342	Cable Kit, Motorola MTP3550	
3250	Cable Kit, Sepura Tetra (requires control head or AIU-box)	
3259	Cable Kit, EADS/Airbus TMR800i	
3124	Cable Kit, Kenwood 15 Pin HD	
3035	Cable Kit, Kenwood 25 Pin	
3314	Cable Kit, Kenwood TKR750 Repeater	
3166	Cable Kit, Icom IC-A110 / A120	

3195	Cable Kit, Icom IC-F5062/6062 and more w. 25PIN connector	
3196	Cable Kit, Icom IP-501H, IP-100H and more portables	
3197/02	Cable Kit, Icom IC-F6122 and more w/o 25PIN connector	
3274	Cable Kit, Icom IC-F5400	
3037	Cable Kit, Hytera MD785	
3271	Cable Kit, Hytera RD985	
3265	Cable Kit, Jotron TR7750 / TR7750C	
3313	Cable Kit, Jotron TR810	
3258	Cable Kit, Kirisun M50	
3092	Cable Kit, Sailor 6222 / 6248	
3276	Cable Kit, Sailor RT5022	
3290	Cable Kit, Yaesu FTA250L	
3293	Cable Kit, Icom A25	
3295	Cable Kit, Vokkero Wi	
3310	Cable Kit, Superstar 2400 CB-Radio	
3318	Cable Kit, Wenden WTR388	

NetworkInterface Phones and Intercom



Features

- Connects to phone audio and control
- Connects to 10/100base IP (RJ45)
- 2-wire POTS phone line or...
- GSM/3G-modem

www.lse.se/phone

Part number	Description	Price
2725/00	Interface for POTS Phone connection (2-wire, DTMF)	*
3023	Power Cable Kit	
3009/39	Interface for GSM/3G Phone modem	*
3048/02	"Maestro 100" GSM/3G Phone modem incl. Cable Kit 3091 Excl. antenna	*
3284	Antenna "Smartblade" w. 2.5m cable and SMA/m connector	
3131	Interface for Intercom between operators, no external wire connection (LE)	
3226	Power cable to above interface	

For SIP phone systems, use operator option 3154 on pages 4. No hardware needed.

**The Maestro 100 and interfaces has gone out of production, we have only a few units left.
Please ask when you need to connect GSM or POTS phones.*

NetworkInterface PA & Foghorn



Features

- PA function through horn speaker(s)
- Fog horn function through the same speaker(s)
- Ambient listening through microphone

www.lse.se/pa

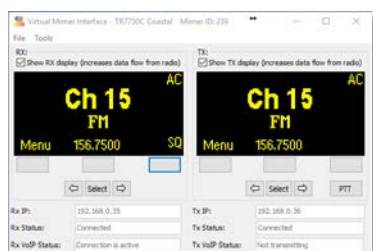
Part number	Description	Price
3009/50	Interface for PA, FogHorn & Ambient microphone	
3277	Cable Kit	

Please find PA speaker, amplifier and microphone on the accessory pages.

Virtual NetworkInterface Jotron

Jotron radios with ED137.

This interface works like the standard physical Network Interfaces but is delivered as PC software.



Features

- Runs as PC software
- Connects via IP to the base radio's receiver and transmitter
- Admits remote control of the radio with similar engineering menus as on the radio front panel (from the server PC)
- Works as all other physical Network Interfaces in a SoftRadio system
- Gives the operators a Virtual Control Head with channel and squelch settings

Engineering settings on server

Part number	Description	Price
3202	Virtual Interface for Jotron ED137, TR7750 / TR7750C	
3302	Support for ATIS	
3303	Hot standby software (one option needed per server pair)	*

* Comming option, please ask

www.lse.se/jotron

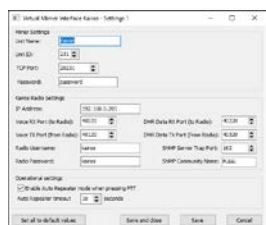


*Virtual Control Head
at operator*

Virtual NetworkInterface Kairos

Kairos Base stations.

This interface works like the standard physical Network Interfaces but is delivered as PC software.



Features

- Runs as PC software
- Connects via IP to the base radio
- Admits remote control of the radio
- Works as all other physical Network Interfaces in a SoftRadio system

Engineering settings on server

Part number	Description	Price
3281	Virtual Interface for Kairos base stations	

www.lse.se/kairos

Mimer RadioServer



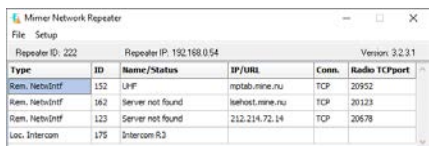
www.lse.se/radioserver

Features

- Linux software
- With or without hardware
- Connects devices over UDP Broadcast
- Connects operators over TCP (standard)
- Connects operators over UDP Unicast (sat-mode)
Sat-mode handles long latency and high jitter

Part number	Description	Price
2860/03	RadioServer Mk3 Standard version including Linux server H/W	
3170	RadioServer Image Virtual Server Linux software to be run on customer H/W	
2860/05	RadioServer Mk3 Satellite mode version including Linux server H/W	
3170/04	RadioServer Image Sat-mode, Virtual Server Linux software to be run on customer H/W	
3322	Spare power cable Fits RadioServer MK3	

Mimer NetworkRepeater



www.lse.se/networkrepeater

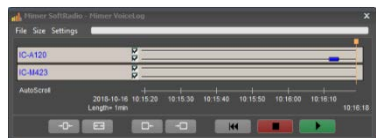
Features

- Windows Software
- Connects devices over TCP
- Connects operators over UDP Broadcast
- Two sizes
- Option for Intercom
- Option for Hot Standby

Part number	Description	Price
2861	NetworkRepeater	
2861/02	NetworkRepeater LE, connects max 8 devices	

Options		Price
3122	Intercom function	
3134	Hot Standby function	

Mimer VoiceLog



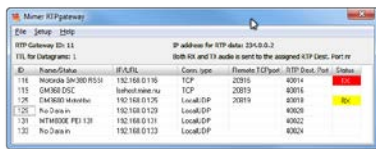
www.lse.se/voicelog

Features

- Windows Server Software
- Records all audio in the system
- Time stamps all recordings
- Two sizes
- VoiceLog Player included for the administrator
- Large version logs ISSI/GSSI of the radio user

Part number	Description	Price
2862	Mimer VoiceLog	
2862/02	Mimer VoiceLog LE, max 4 devices and 4 operators	

Mimer RTP Gateway



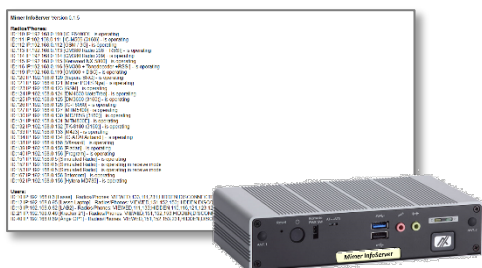
Features

- Windows Server Software
- Sends all audio to a third party recorder in RTP format
- No operator software

Part number	Description	Price
3157	Mimer RTP Gateway	

Mimer InfoServer

Features



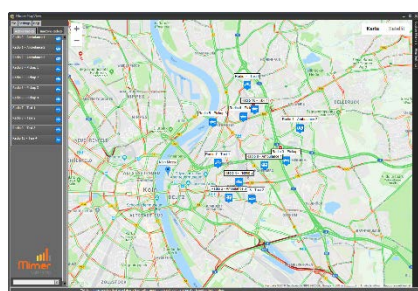
- Ready to run Linux server or virtualised server
- Keeps track of all units in the system
- Monitored through a web browser
- SNMP messaging

www.lse.se/infoserver

Part number	Description	Price
3132/02	InfoServer with SNMP – Hardware version	
3132/03	InfoServer with SNMP – Virtualised image version	

Mimer MapView Mk2

Features



- Windows Software
- Shows GPS positioned radios on maps
- Track and trace of individuals
- Optionally uses off line maps
- Handles emergency alarms

Demo software available on request

Please see web page for updated info on functions and what radio types that are compatible.






www.lse.se/mapview







Part number	Description	Price
3125	MapView, Server license	
3125/02	MapView, Operator license (price per operator)	
3125/03	MapView, Server add-on, Sepura indoor positioning	

A Network Interface and a Cable Kit to the Tetra radio is needed; Sepura or Motorola.




Audio accessories

www.lse.se/accessories



	Part number	Description	Price
	3110	Heavy duty table top Microphone <ul style="list-style-type: none"> • Gooseneck mic • Heavy duty PTT key • Steady foot, total 0,9Kg • Connects to PC through 3,5mm mic audio and COM-port 	
	3110/02	Same as above, with one common D-sub connector to be used with 3156	
	3110/04	Same as above, with one common D-sub and long cable. To be used with 3191	
	3191	Connection box with built in audio card and COM port adaptor. Connects two microphones 3110/04	
	3156	Cable kit to 3110/02 Connects the microphone to a Network Interface DB25 and the interface to speakers and power (for use with SoftLine systems)	
	3110/03	Heavy duty table top Microphone with <u>built in speaker</u> <ul style="list-style-type: none"> • Gooseneck mic • Built in speaker/volume control • Heavy duty PTT key • Steady foot, total 0,9Kg • Connects to PC through 2xUSB 	
	3110/06	Heavy duty table top Microphone with <u>built in speaker</u> <ul style="list-style-type: none"> • Same as the 3110/03 above plus an extra connection for a PTT foot switch. 	

	Part number	Description	Price
	3110/07	<p>Heavy duty table top Microphone with <u>built in speaker</u> (for SoftLine)</p> <ul style="list-style-type: none"> • Gooseneck mic • Built in speaker/volume control • Heavy duty PTT key • Steady foot, total 0,9Kg • Connects to Network Interface through one common D-Sub 	
	3110/05	<p>Heavy duty table top Microphone w/o PTT</p> <ul style="list-style-type: none"> • Gooseneck mic • Steady foot, total 0,9Kg • Connects to PC through 3,5mm analogue mic audio 	
	3112	<p>Gooseneck Microphone for the microphones above. Spare part.</p>	
	3198	<p>Gooseneck Microphone for panel installation. Connection box and cable kit with 3,5mm connector for PC (PTT not included)</p>	
	3145	<p>Headset, Jabra BIZ 2400</p> <ul style="list-style-type: none"> • Light weight • Stereo • Connects to USB • Built in sound card • No PTT-key 	
	3153	<p>Handset with cradle</p> <ul style="list-style-type: none"> • Connects to USB • Built in sound card • PTT-key in the handset <p>Can also be ordered together with Tipro PC preinstalled on either side.</p>	

	Part number	Description	Price
	3080	<p>Microphone</p> <ul style="list-style-type: none"> • Computer style • Connects to 3,5mm <p>(Product may vary from picture)</p>	
	3083	<p>Sound Card, USB</p> <p>(Product may vary from picture)</p>	
	3096	<p>Speakers</p> <ul style="list-style-type: none"> • Connects to 3,5mm <p>(Product may vary from picture)</p>	
	3078	<p>Table top PTT</p> <ul style="list-style-type: none"> • Connects to COM-port 	
	3079	<p>Foot PTT</p> <ul style="list-style-type: none"> • Connects to COM-port 	
	3266	<p>Split cable</p> <ul style="list-style-type: none"> • Connects two PTT's to one COM-port 	
	3204	<p>COM-Port to USB adapter</p> <p>For use with external PTT when the PC does not have a COM-port</p> <p>(Product may vary from picture)</p>	

	Part number	Description	Price
	3279	PA - Speaker Amplifier (Monacor AKB-160)	
	3280	PA Speaker (Monacor IT-60)	
	3278	Microphone for outdoor use, including built in amplifier	

Installation Accessories

	Part number	Description	Price
	3203	Power Supply <ul style="list-style-type: none"> • Input 115/230VAC • Output 13,6VDC • 8 Amp 	
	3285	Power Supply <ul style="list-style-type: none"> • Input 100/240VAC • Output 12VDC • 2 Amp 	




	Part number	Description	Price
	3106	Mounting bracket for the standard NetworkInterface	
	3106/02	Mounting bracket for the smaller NetworkInterface LE	
	3139	Open rack shelf, 3U, 30cm deep <ul style="list-style-type: none"> • Power supply & fuses • Installation of preferred SoftRadio NetworkInterface and radio (not included) 	
	3139/02	Open rack shelf, 3U, 30cm deep <ul style="list-style-type: none"> • Same as above but without the PSU 	
	3139/03	Open rack shelf, 3U, 30cm deep <ul style="list-style-type: none"> • Power supply & fuses • Installation of X-Link interface and radios (not included) 	
	3169	Closed rack unit, 3U <ul style="list-style-type: none"> • Power supply & fuses • Installation of preferred SoftRadio NetworkInterface and radio (not included) 	
	3169/02	Closed rack unit, 3U <ul style="list-style-type: none"> • Power supply & fuses • Installation of preferred SoftRadio NetworkInterface and radio (not included) • With radio front visible 	

We can also supply many types of radio units. Please ask.


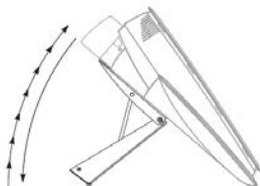
Dispatcher PC's

When you order a PC through us for the SoftRadio operators, we always set them up so that they are as ready as can be when you get them. This includes loading the Windows software with all the latest upgrades, loading all necessary drivers for LAN, audio, touch screen etc. And of course, loading the SoftRadio version and options that you have ordered. You will get the PC with all audio levels pre-set, all keys and functions at its best.




www.lse.se/pc

	Part number	Description	Price
	3140/03	Operator PC, Tipro BeFree07 <ul style="list-style-type: none">• Touch Screen PC, 7"• Fan less (silent)• Row of function keys• Windows 10• Speakers/Microphone/PTT• Built in handset• Setup w. SoftRadio and options• SoftRadio license not included	
	3140	Operator PC, Tipro BeFree10 <ul style="list-style-type: none">• Touch Screen PC, 10,4"• Fan less (silent)• Windows 10• Speakers/Microphone/PTT• Setup w. SoftRadio and options• SoftRadio license not included	
	3140/02	Operator PC, Tipro BeFree20 <ul style="list-style-type: none">• Touch Screen PC, 15"• Fan less (silent)• Windows 10• Speakers/Microphone/PTT• Setup w. SoftRadio and options• SoftRadio license not included	

If you will be using the microphone/speaker for full duplex calls. You should add the echo cancelation module found on the next page.

	Part number	Description	Price
	3140/04	Operator PC, Tipro BeFree22 <ul style="list-style-type: none"> • Touch Screen PC, 15,6" • Fan less (silent) • Row of function keys • Windows 10 • Speakers/Microphone/PTT • Setup w. SoftRadio and options • SoftRadio license not included 	
	3144	Angle mechanism for the Tipro Operator PC:s above	
Picture missing Module built into the PC	3227	Echo Cancellation module. Recommended when using the Tipro in full duplex through the goose neck microphone.	

The 3153 handset above can be added as a side mounted module to the Tipro's.

	3334	Touch Screen, 7" "Mimo" <ul style="list-style-type: none"> • Connects through HDMI and USB • VESA mounting possible 	
	3177	Touch Screen, 10,1" "Mimo" <ul style="list-style-type: none"> • Connects through HDMI and USB • Heavy table top foot • VESA mounting possible 	
	3175/02	Operator PC, Lenovo M71Q <ul style="list-style-type: none"> • Small formfactor • Fan less (silent) • Windows 10 • Setup w. SoftRadio and options • SoftRadio license not included 	

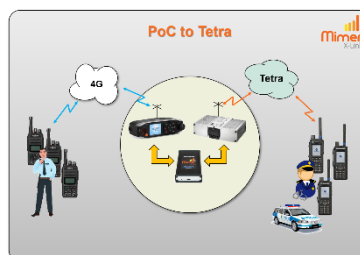
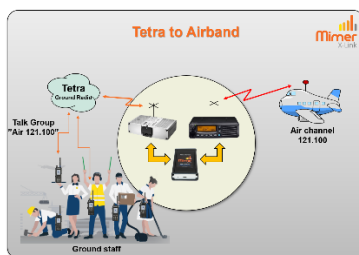
Mimer X-Link MK2

Mimer X-Link MK2 connects two radios together building a cross patch bridge between them. Audio that comes in through one radio is retransmitted on the other radio and vice versa.

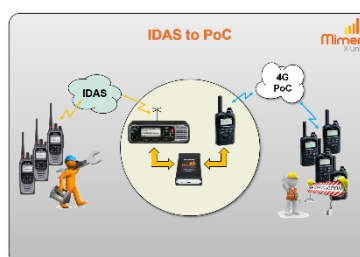
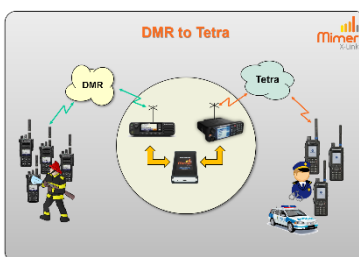
More information on the web page: www.lse.se/x-link

Almost any two radios, and also other audio equipment like PA-systems, can be patched. More cable kits will be available, please ask. 19"-rack available on the accessory's pages.

Please note, the X-Link MK2 unit needs two cable kits, one to each radio.



The old X-Link was discontinued, due to component shortages.



The new X-Link MK2 will start shipping in February 2023.

Part number	Description	Price
3350	X-Link MK2 Interface box	
3106/03	Mounting Bracket	
3254	USB Cable for programming	

Part number	Cable Kits (One cable kit needed for each radio)	Price
3347	Open end cables	
3351	Sepura SRG-Control Head	
3352	Sepura SRG-Line In/Out	
3353	Sepura SRG-AIU	
3354	Motorola MTM5400	
3355	Motorola MTM5500	
3357	Motorola DM4600 (26PIN)	
3358	Motorola TLK100 / SL1600	
3359	Motorola TLK150	
3360	Motorola CM/GM-series 16PIN	
3361	Motorola GM/DM-series 20PIN	

More cable kits on the next page.

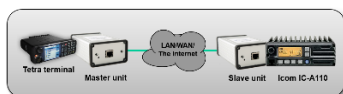
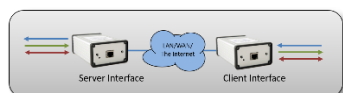
Part number	Cable Kits (One cable kit needed for each radio)	Price
3362	Motorola MTP3550	
3363	Icom IC-A110/A120	
3364	Icom IC-F5400	
3365	Icom IC-F5122 etc w/o 25PIN connector	
3366	Icom IC-F5062 etc w. 25PIN connector	
3367	Icom IC-FR5000	
3368	Icom IP501H/IP100H and other with 2-pin side connector	
3369	Jotron TR7750	
3370	Jotron TR810	
3371	Ericsson Aurora	
3372	Vokkero Wi	
3373	Hytera MD785	
3374	Kenwood NX3820/820	
3375	Estalky GT61	
3376	Kirisun M50	
3377	Airbus TR880i	

More cable kits will be added, please ask.

And check out the web site for updates.

Mimer SoftLine

Mimer SoftLine is a special version of the SoftRadio system where two network interfaces are connected to each other instead of using a PC software at one end. The two interfaces connect to each other over LAN/WAN or the Internet so that the two nodes can be "anywhere". More information available on the web pages: www.lse.se/softline



Features

- Point-to-point connection over LAN / WAN / The Internet
- No operator PC involved
- Remote audio, RS232 and I/O:s
- Cross connect radios back-to-back
- Radio at one end, mic/speaker at other end
- Radio at one end, control head + microphone at other



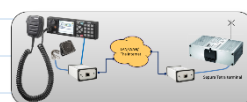
Part number	Generic use with Audio / I/O's / RS232	Price
3009/10	Interface generic use, line level -10dB (two units needed)	
3033	Cable Kit for above interface, with open end cables (no I/O)	
3033/02	Cable Kit for above interface, w. open end cables (with I/O leads)	
3033/04	Cable Kit for above interface, w. open end cables (with RS232 leads)	
3009/21	Interface generic use, mic/speaker levels (two units needed)	
3028	Cable Kit, generic for above interface, with open end cables	

	Cross Patch of two radios or remote control of radio with microphone and speaker	Price
3009/21	Interface generic use, mic/speaker levels	
3009/52	Interface generic use, mic/speaker levels, w. transformer (for A120)	
3009/58	Interface at the microphone end (use microphone 3110/07)	
3018	Cable Kit, generic, with open end cables	
3021/02	Cable Kit, for Motorola CM/GM with 16 pin back port	
3174	Cable Kit, for Motorola DM with 20 pin back port	
3173	Cable Kit, for Motorola DM with 26 pin back port	
3026	Cable Kit, MTM5400	
3124	Cable Kit, Kenwood 15 Pin	
3035	Cable Kit, Kenwood 25 Pin	
3092	Cable Kit, Sailor 6222	
3166/02	Cable Kit, Icom IC-A110 / A120	
3195	Cable Kit, Icom IC-F5062/6062 and more w. 25PIN connector	
3196	Cable Kit, Icom IP-501H, IP-100H and more portables	
3197	Cable Kit, Icom IC-F6122 and more w/o 25PIN connector	
3037	Cable Kit, Hytera MD785	
3246	Cable Kit, Sepura Tetra (requires control head or AIU-box)	
3126	Cable Kit, Icom M423/M424/M400BB/M506	
3282	Cable Kit, 2xDM2600 at each side for full duplex	

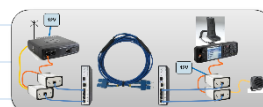
Mimer SoftLine

Mimer SoftLine kits that remote controls radios using their standard control heads or command microphones, no PC involved.

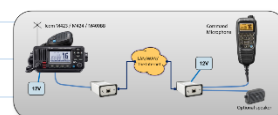
	Remote control of Sepura	Price
3009/13	Interface Sepura, Control head side	
2859/07	Cable Kit for the interface above	
3009/14	Interface Sepura, Radio side	
3015	Cable Kit for the interface above	
	www.lse.se/sl-sepura	



	Remote control of Motorola MTM5500	Price
3187	Complete kit with all interfaces and fibre switches	
	Includes all necessary cables, multimode fibre version	
3187/02	Complete kit with all interfaces and fibre switches	
	Includes all necessary cables, single mode fibre version	
	www.lse.se/sl-mtm5500	



	Remote control of Icom IC-M423/M424/M400BB/M506/M510	Price
3009/40	Interface, Command microphone side	
3189/02	Cable Kit for the interface above	
3009/41	Interface, Radio side	
3126/02	Cable Kit for the interface above	
	www.lse.se/sl-marine	



	Remote control of Motorola GM380/1280-series	Price
3009/12	Interface Motorola GM-series*, Control head side	
3017	Cable Kit for the interface above	
3009/03	Interface Motorola GM-series*, Radio side	
3016	Cable Kit for the interface above	
	www.lse.se/sl-gm	

*Works with GM380/1280, not GM340/360.

(Sorry, but we have no kit for the Motorola MotoTrbo series)

	Power supply for the Control head / Control microphone side	Price
3285	100-240VAC to 12VDC, 2A	

I will help with your design of a system.
Please give me a call or send an email.



Roland Ehne

roland.ehne@softradio.se

Office: +46-8 36 42 25

Mobile: +46-70 666 80 80

