

X-Link Cable kit 3364

**Connect a Icom IC-F5400/6400
to Mimer X-Link MK2**

Also refer to the X-Link setup manual.

Interface Power Supply

12VDC / max 0,3A.

Power connection through separate cable delivered with the interface. Red is positive.

Programming the radio

Follow the settings as described on the page below.

Connection

The radio is connected both through the 25Pin connector and through the external speaker connector.

Settings in the X-Link interface

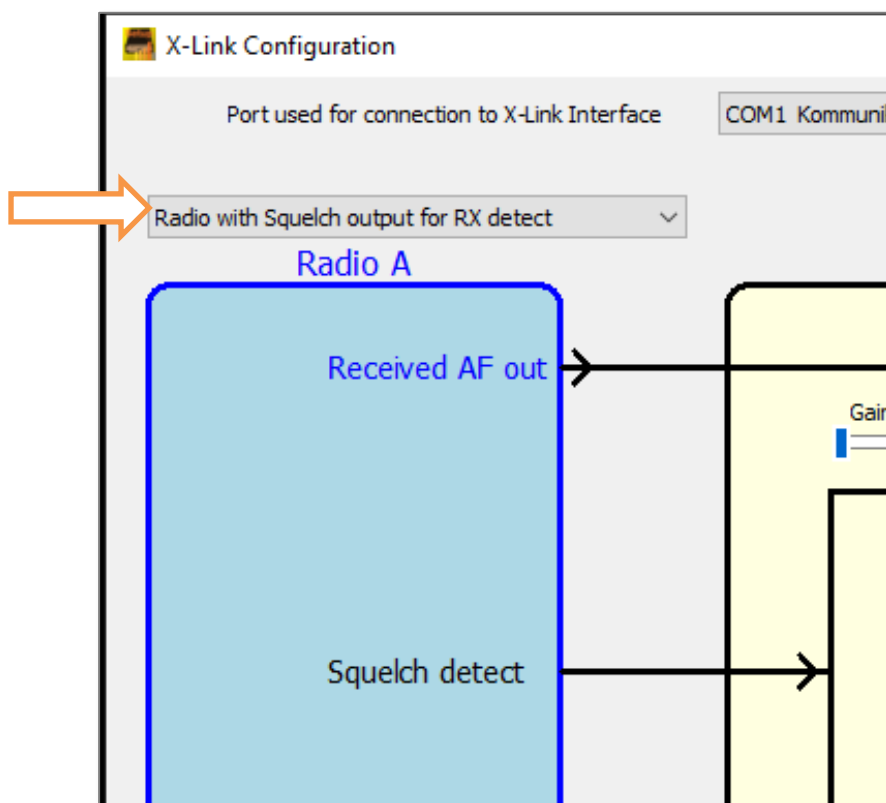
Select the proper settings for Radio A or Radio B in the X-Link setup software, depending on how you connect to the interface.

The F5400 series radios have an output signal that triggers when the channel is active. Depending on radio model and radio system you can set it, in the radio, to trigger on Squelch or PL-detect.

This is preferred to using the VOX detect function in the X-Link.

Therefore set the X-Link to use:

- Radio with squelch output for Rx detect



Part of the Configuration software window

Check/adjust the audio levels in both directions in the interface so that the users can hear the X-Link with the same level as when listening to other radios.

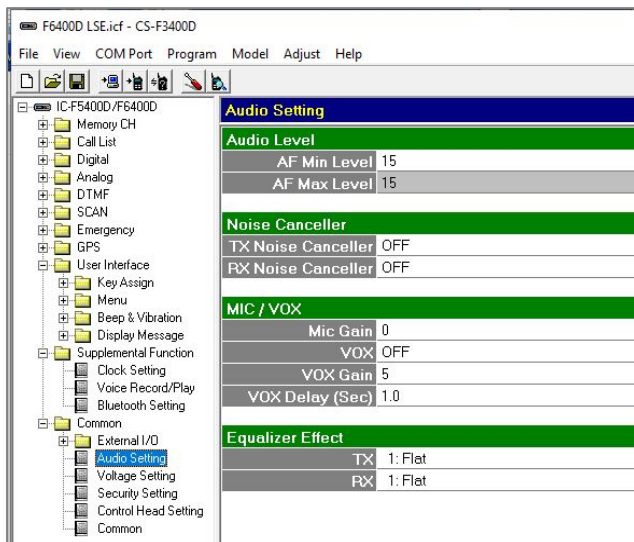
See the X-Link setup manual for details on setting the audio level.

Radio Setup

Speaker Audio

The audio is connected through the external speaker output jack. This is affected by the volume control on the radios front. The setting below will inhibit that someone accidentally changes the setting on the front panel.

Set both the Min and Max Audio Level to 15. This will force the external audio to have a fixed volume level that is accepted by the X-Link Interface.



Busy

Set the Ext I/O 17 to Busy active Low.

PTT

Set the Ext I/O 19 to EPTT active Low.

