

Cable Kit 3038/02 Interface 3009/00

Mimer SoftRadio – Universal kit

Remote functionality

This cable kit will together with the Mimer Network Interface give remote control of the radio's audio and PTT functions.

The interface has line transformers in/out to fit most equipment with line levels, -10dB over 600 Ohm.

Alternatively other products than radios can be connected, for example a PA system.

PTT is keyed on a separate output. There is also a separate squelch input, used for indication of reception, instead of using the audio level (vox) for indication.

Power

Connect the red/black cables to a power source. Typically 12VDC, 0,5A. Red is positive and black is negative.

Audio output

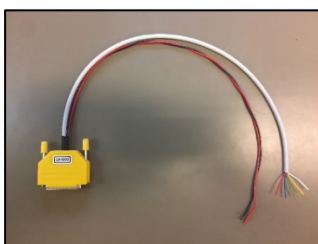
Preferably connect the outgoing audio from the radio to an output with a fixed level that is not affected by the setting of a volume control on the radios front panel. If that is not possible, set the volume control to 50-60% level.

Audio level adjustment

The audio levels in/out between radio and Network Interface can be set in the software "Network Interface Setup". See screen shots on next page.

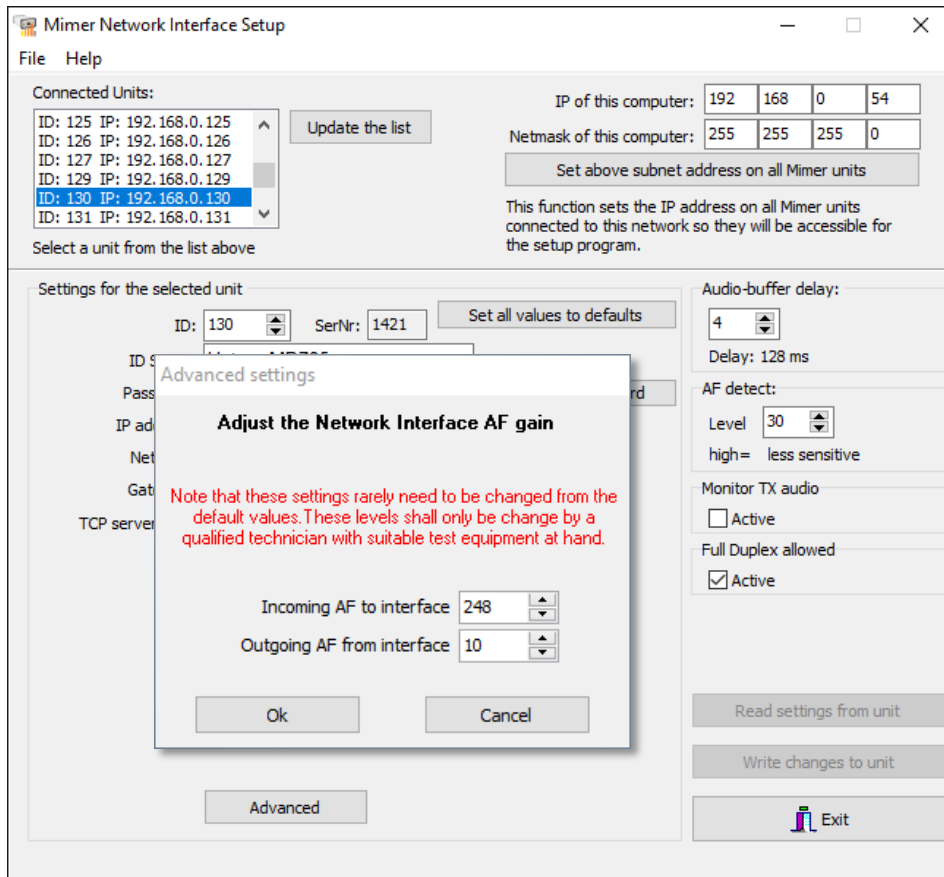
Before changing the audio levels in the interface it is important to be sure that the operator PC's microphone level is correct. Use the tool "Audio Levels" that can be found under "View" in Mimer SoftRadio. Set the PC microphone level so that the level bar is normally green and hits the top (red) when you speak at a high level.

There are more reading on audio settings in the Setup Guide for Mimer SoftRadio and on the web page: www.lse.se/audio

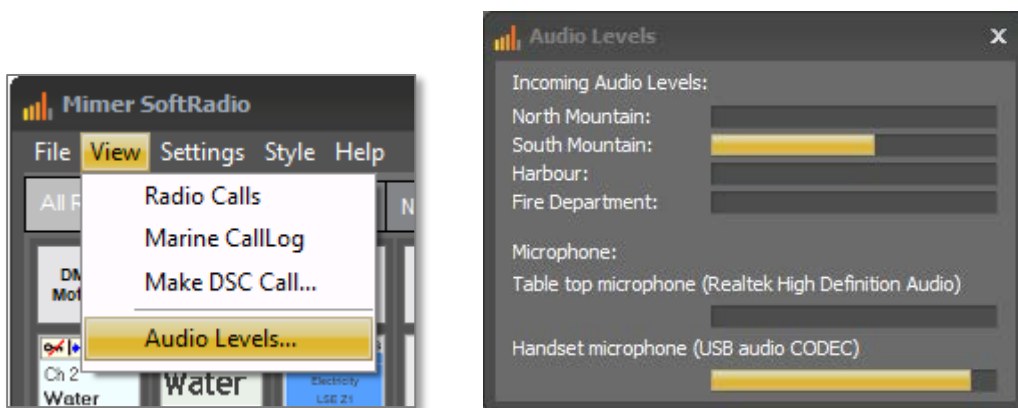


Cable Kit

Screen shots



The key "Advanced" above brings forward the menu for setting of audio levels in/out of the Network Interface.



Select View and Audio Levels to find the peak meters.

Cable connection

