

Cable Kit 3033/02 Interface 3009/10

Mimer SoftLine

Remote functionality

Two interfaces and two cable kits will give a virtual 4-wire line connection over IP.

The interface has line transformers in/out to fit most equipment with line levels, -10dB over 600 Ohm.

There are also two I/O connections in each direction, where a logical input at one end gives a logical output at the other end.

Alternatively, other products than radios can be connected, for example a PA system.

Power

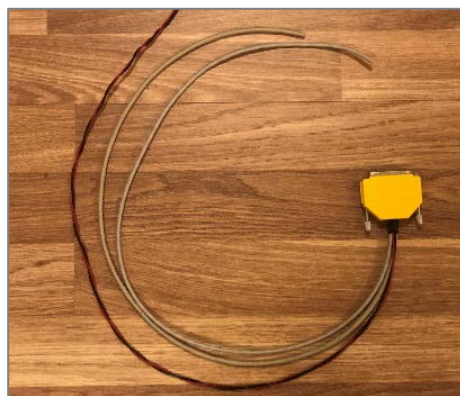
Connect the red/black cables to a power source. Typically, 12VDC, 0,5A. Red is positive and black is negative.

Audio output

Preferably connect the outgoing audio from the radio to an output with a fixed level that is not affected by the setting of a volume control on the radios front panel. If that is not possible, set the volume control to 50-60% level.

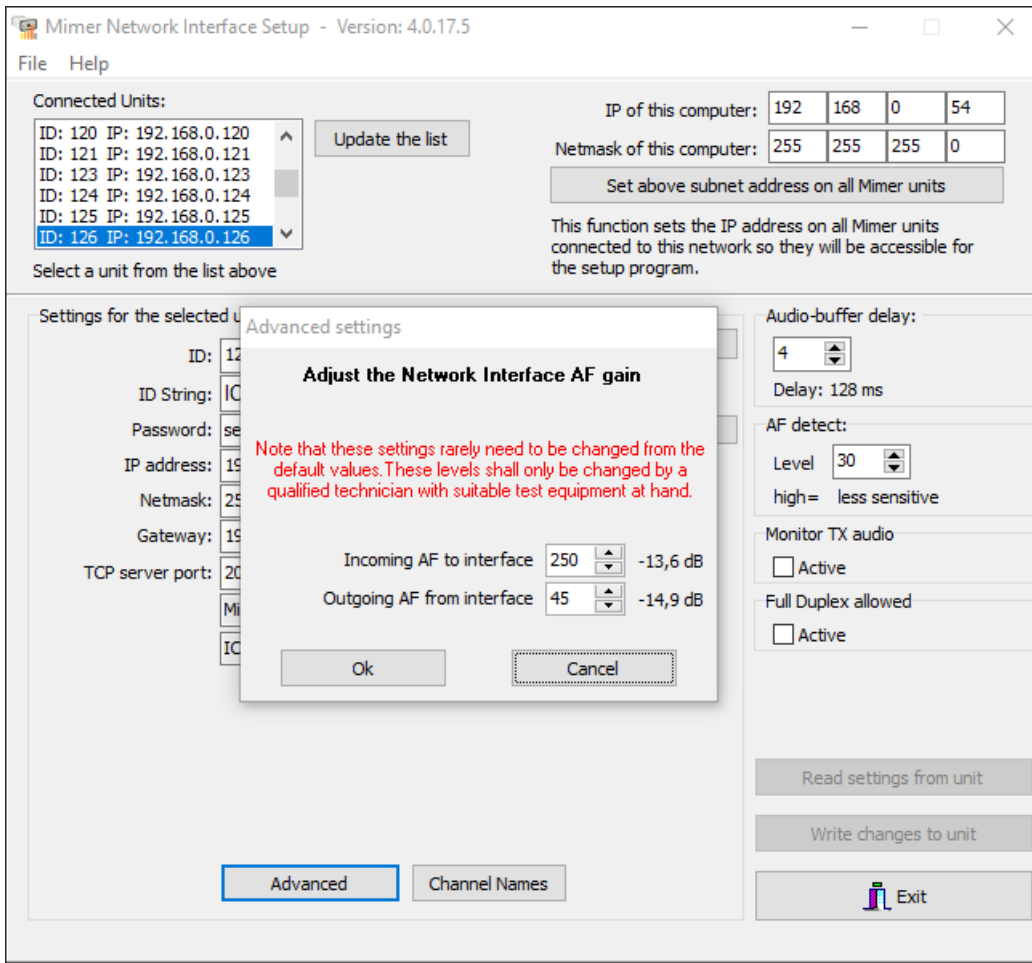
Audio level adjustment

The audio levels in/out between radio and Network Interface can be set in the software "Network Interface Setup". See screen shots on next page.



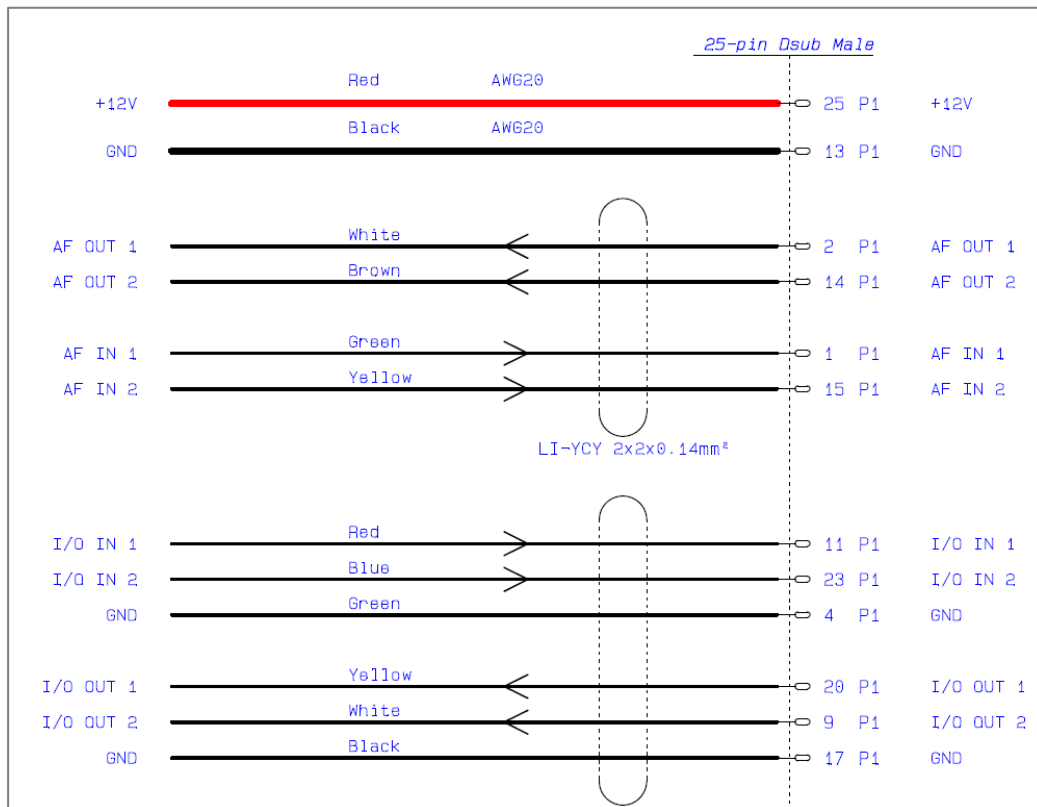
Cable Kit 3033/02

Screen shots



The key "Advanced" above brings forward the menu for setting of audio levels in/out of the Network Interface.

Cable connection



Usage of the I/O's

The I/O's are connected in pairs so that input to I/O IN1 on one interface will trigger an output at I/O OUT1 on the other interface. All together giving 2 I/O's in each direction.

Inputs

On = 2.5-30V / Off = 0-0.8V, 47kohm impedance to ground.
Optional reverse-current protected 5.6kohm pull-up to +5V

Open collector outputs

Max 30V / Max 10mA. Reverse-current protected 5.6kohm pull-up to +5V.
Pull-up can optionally be disconnected.