

## Cable Kit 3126 Interface 3009/31 & 3009/46

### Mimer SoftRadio – Icom IC-M423/M424/M423G/M424G IC-M506 and the IC-M400BB

#### Remote functionality

This cable kit will together with the Mimer Network Interface give remote control of the radios audio and PTT functions. It will also, through a Virtual Control Head, allow channel change, squelch setting, dual watch on/off, high/low power and display of channel number and icons.

#### Squelch on M506

On the M506 radio there are two squelch settings that work separate. One on the front panel and one from the back connector that SoftRadio uses. In order for the correct squelch setting to be used, you need to set it from SoftRadio, the setting on the front panel will be ignored when used remote from SoftRadio.

#### Radio connection

The cable kit connects to the back port of the radio. The same that is otherwise used for the Command Microphone, HM-195 (HM-195B/SW, HM195GB/GW).

#### Power connection

The red and black wires shall be connected to 12VDC, red is positive.

The network interface consumes max 0,3A.



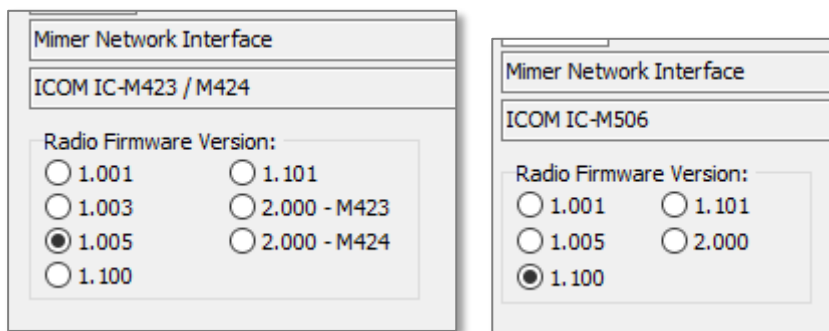
*Cable kit for Icom marine radios*

### Radio Firmware version

There are different versions of the radio firmware. During power up of the radio, it displays the current version.



The Network Interface needs to be set for the correct radio firmware version. This is done in the software “Mimer Interface Setup”.



*Part of the settings in “Mimer Interface Setup”*

After setting of the correct version, please reboot both radio and interface.

If you connect the interface to the radio without having set the correct version, the radio display will say “Firmware is updating”. The radio is then trying to update the command microphone (that is not there), it will fail after a few minutes.

If you have a firmware version in your radio that does not match any of the available settings. Then please contact us at [SoftRadio](http://SoftRadio).

Please note that the interface setup software only mentions IC-M423 in the menu above, but the setting is the same also for M424 and M400BB. Except the 2.000 an onwards that are different for M423 and M424.

## Radio programming and setting

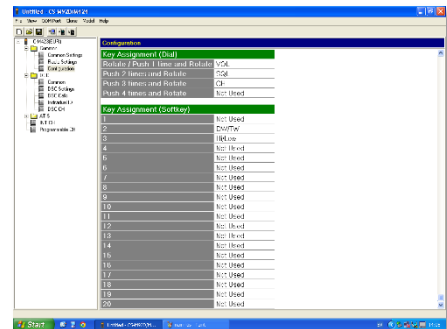
### Soft keys in IC-M423, M506, M400BB

In order for the functions Dual Watch and High/Low Power to work, these needs to be set to the two middle soft keys, as in the picture below. These are the default positions on the M423-series radios. On the M506 the “HI/LO” key needs to be set to the correct position.

We also recommend that all other soft keys are disabled so that the setting is not changed by mistake. This can be done both from the radios menu and from the radios PC setup software.



IC-M423 programmed with only two soft keys



Soft key settings M423

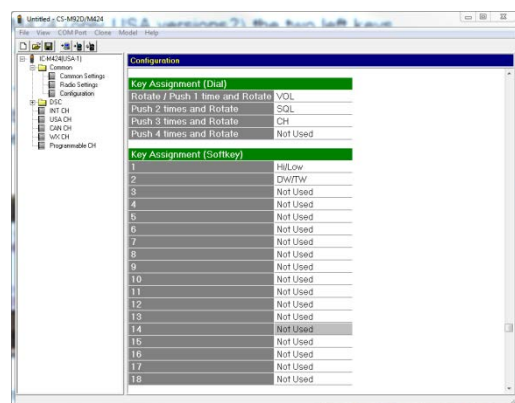
### Soft keys in IC-M424

In some versions of the M424 (only USA versions?) the two left keys on the default menu are always set to “DTRS” and “DSC”. They cannot be changed.

Therefore you should set “HI/LO” to key 1 and “DW” to key 2. The display will then look as below. Please disable all other keys. When this is set the keys on the SoftRadio virtual control head will work as intended.



IC-M424 programmed with the softkeys



Soft key settings M424

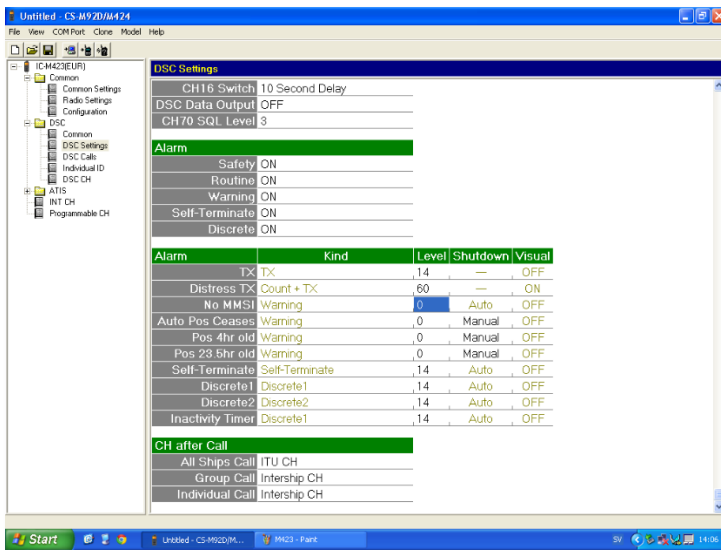
Key settings can be done both from the radios menu and from the PC setup software.

## Alarms

The “-G” versions of the radio have a built in GPS receiver. This is not used in SoftRadio installations. If the radio is installed in a screened room the GPS signal might come and go. It is then a good idea to turn off the alarm, warning that you have lost the GPS signal.

Also the warning that no MMSI is entered can be shut off.

These settings are done under DSC settings in the radios programming software. It cannot be done from the radios front panel. See picture below.



Turn off the warnings by setting the levels to zero.

Apart from this, no special programming is needed in the radio.

## DSC functionality

Please note that the Mimer SoftRadio system can't make use of the radios internal DSC functions. It is recommended not to program the radio with an MMSI-number. If you need to use DSC, please use the SoftRadio option for Marine Calls.

[www.lse.se/marine](http://www.lse.se/marine)

The Network Interface will automatically bypass the radios menu for entering an MMSI-number at start up.

## Display Color

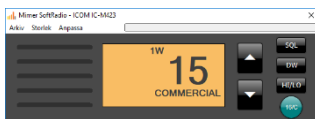
The display back ground colour can be changed under settings in the virtual control head.



Icom IC-M423



Icom IC-M423G



Virtual Control Heads

## Virtual Control Head functions

