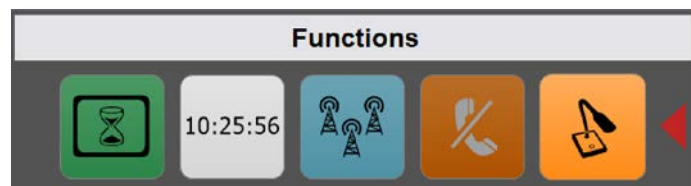




**Connecting radios all over the world**

**How to setup and use**  
**Mimer Custom Function Panel**  
**Option 3013**



Release date: March 15, 2021

This guide will help with the setup of your Mimer Custom Function Panel.  
Please also refer to the web pages [www.lse.se](http://www.lse.se), [www.lse.se/cfp](http://www.lse.se/cfp).

## 1 Table of Contents

<b>1</b>	<b>TABLE OF CONTENTS .....</b>	<b>2</b>
<b>2</b>	<b>GENERAL .....</b>	<b>3</b>
<b>3</b>	<b>SETTING UP THE PANEL .....</b>	<b>3</b>
3.1	SYSTEM REQUIREMENTS .....	3
3.2	INSTALLATION .....	3
3.3	CONFIGURATION.....	3
3.3.1	<i>Customise the panel .....</i>	<i>4</i>
3.3.1.1	Label at the top of the panel .....	4
3.3.1.2	Buttons on the panel .....	4
3.3.1.3	Add/Remove/Move buttons .....	4
3.3.1.4	Button operation .....	5
3.4	SPECIAL CONFIGURATION.....	5
<b>4</b>	<b>SETTING UP THE AUDIO PATHS .....</b>	<b>6</b>
4.1	MIMER CONNECTIONS SETUP .....	6
4.2	SELECT SOUND DEVICES .....	6
4.3	WINDOWS AUDIO SETTINGS .....	7
<b>5</b>	<b>SETTING UP A GROUPSEND BUTTON.....</b>	<b>8</b>
5.1	CREATE A NEW BUTTON .....	8
5.2	RESTART .....	8
5.3	SETTING UP THE GROUPSEND RADIOS .....	9
<b>6</b>	<b>MORE FUNCTIONS .....</b>	<b>10</b>
6.1	SHOW TIME.....	10
6.2	BLOCK SCREEN .....	10
<b>7</b>	<b>CUSTOM DESIGNED FUNCTIONS .....</b>	<b>11</b>

## 2 General

The **Custom Function Panel** replaces the old panel that only handled the GroupSend function and can now be customised too “almost anything”.

The main functions are GroupSend and the capability to choose between two different audio devices. This is often used for selecting between using a built in microphone and speaker or using a USB headset or USB handset.

It is also possible to order custom designed scripts that add buttons or hide buttons to the SoftRadio GUI. For example if you need a quick call button to a phone number on the SIP-phone client. This is further described at the end of this manual.

## 3 Setting up the panel

### 3.1 System requirements

To run the option you need to have Mimer SoftRadio 3.4.13.00 or higher installed.

### 3.2 Installation

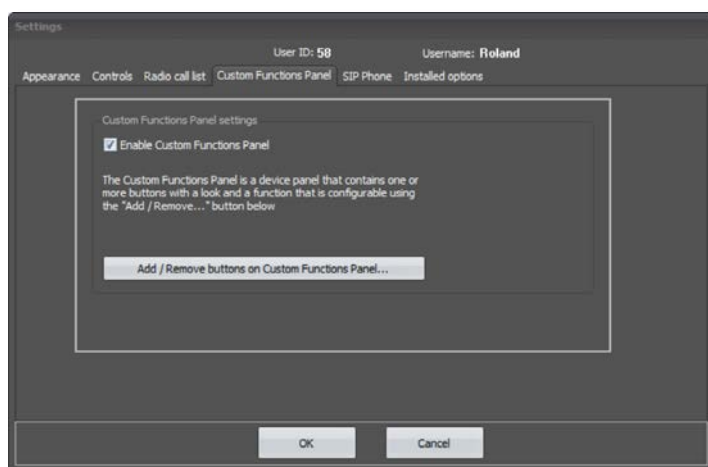
Install the software package from the supplied USB stick.

### 3.3 Configuration

After the option has been installed it needs to be activated in “Settings” in Mimer SoftRadio.

Tick the box “Enable Custom Functions Panel”.

When it is activated it can be customised in the next menu.

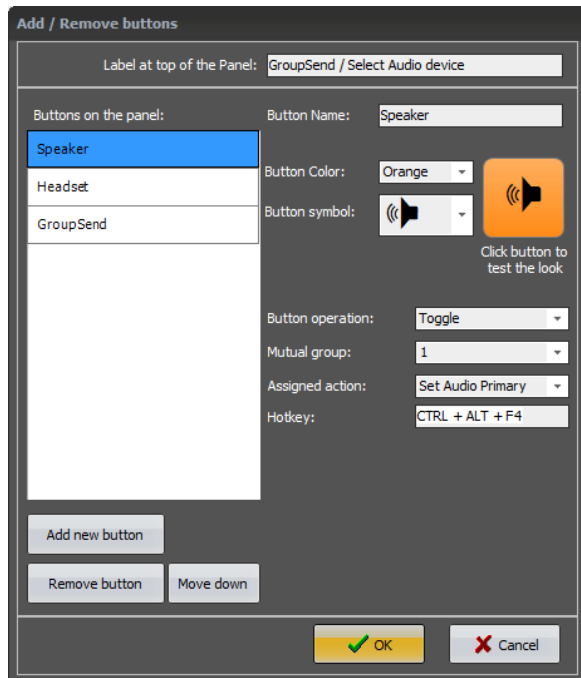


*SoftRadio Settings with the tab for the Custom Functions Panel.*

### 3.3.1 Customise the panel

Here you can choose the symbol and the colour of your buttons. You can also test how they look when pressed, by clicking the test button.

The setup comes with preselected buttons for selection of audio devices.



*The Add/Remove buttons menu*

#### 3.3.1.1 Label at the top of the panel

This is the name that shows up in Mimer SoftRadio, in the name bar, the same place where the names of radios and other devices are shown.

It is customizable to the text of your choice.

#### 3.3.1.2 Buttons on the panel

If you have ordered the function for selection of audio device, the preinstalled buttons are named Speaker and Headset. They have a chosen colour and a symbol. You can change both colours and symbols on the buttons. And you can test the colours by clicking the button.

#### 3.3.1.3 Add/Remove/Move buttons

There are two buttons that will add and remove buttons from the panel. There are also buttons that will move the selected button in the list. The buttons will be shown in SoftRadio with the button at the top of the list to the right. If vertical panels are used it will be at the bottom.

After creating a new button you need to give it a name in the box "Button Name".

### 3.3.1.4 Button operation

The preinstalled buttons for audio selection are set up with a toggle function in group 1. This means that when one button is clicked it will unclick the other button, so that only one of the two can be chosen at any given time.

If you add a new button you will need to define what it shall do. First choose if it is a Momentary press or a Toggle you want. If it is a toggle then assign a group number and then the assigned action for the button press, from the drop down list.

The toggle buttons can be assigned “Hot Buttons” on the PC buttonboard. This can be for example F7 or a combination of Ctrl+F7 or even Ctrl+Alt+F7. This is useful when using a handset with a cradle function that sends a Hot Button when the handset is lifted or replaced.

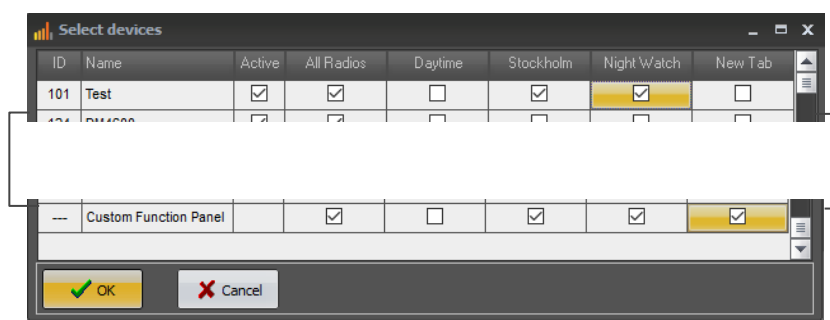
*More info on hook on/off is found in the setup guide for the Tipro Handset.*

*More info on how to set up other functions are found further down in this guide.*

## 3.4 Special configuration

When the selection “Allow users to select connections” is ticked in “Mimer Connections Setup” you also need to tick in the box allowing the Custom Function Panel on the “Select Devices” menu.

And if “Tabs” are used, this needs to be done on each tab that should have the panel.



*“Select Devices” menu.*

## 4 Setting up the audio paths

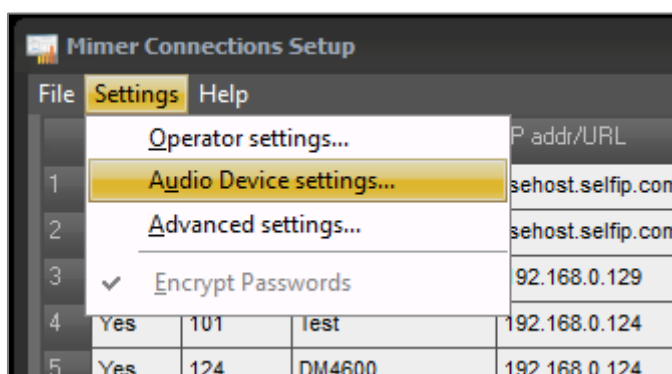
More audio settings information can be found on this page:

[www.lse.se/audio](http://www.lse.se/audio).

### 4.1 Mimer Connections Setup

When the option is installed you need to do some settings for audio in "Mimer Connections Setup".

Select "Audio device settings..." under Settings and you will get a second menu with all the settings for the different audio devices.



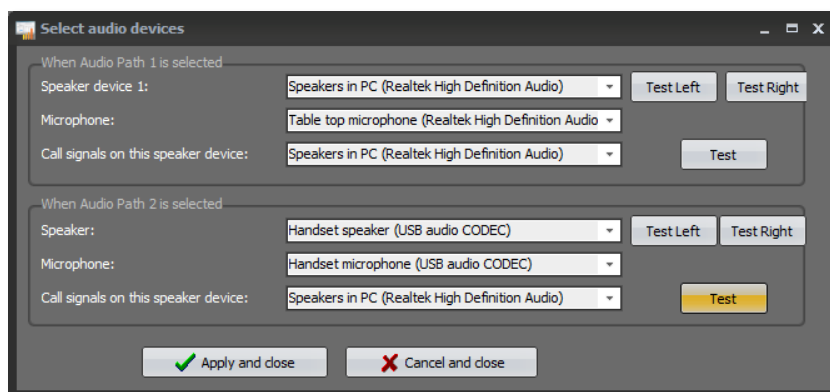
#### *Mimer Connections Setup*

### 4.2 Select Sound Devices

The most common use for the option is to have a choice between the combination of a desktop microphone and speakers or to use a headset.

Often the speakers and the microphone are connected through analogue lines and the headset through a USB connector. This means that the headset has a built in audio card.

Our recommended setting for such a setup will be to select the speakers and microphone as "Audio Path 1" and the headset as the "Audio Path 2".



#### *Select Audio Devices, with a handset as Audio path 2*

Remember to coordinate your setting of the Audio Path 1 & 2 devices with the settings of the buttons in the “Add/Remove buttons” menu described earlier.

We recommend that you use the full name of the audio devices rather than default device. This will make it easier for Windows to find them.

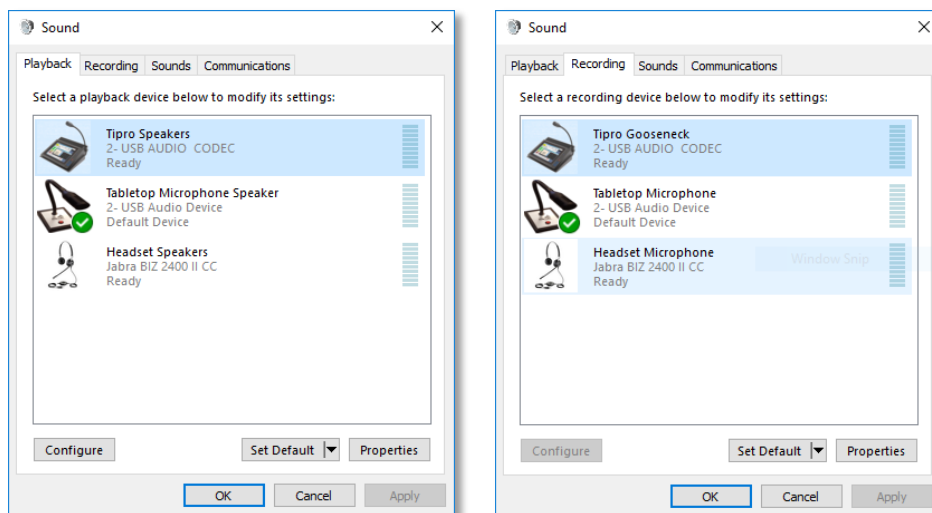
You will probably want the “Audio device for call signals” to be the speakers, otherwise you might miss a call signal if you take your headset off.

There is a test button for each speaker path so that you can easily find which is which.

### 4.3 Windows audio settings

The menus in Windows can look a bit different depending on Windows version and type of audio card, but the basics are the same.

Our recommendation is to change the names and icons on each audio device. This will make it easier for you to select the correct one when setting the levels and to select the correct units in “Mimer Connections Setup”.



*Example from Windows 10 with a Tipro PC, a table top microphone with built in speaker and a headset.*

Audio settings are further described on the web page: [www.lse.se/audio](http://www.lse.se/audio).

## 5 Setting up a GroupSend button

GroupSend is a function that makes it possible to transmit on more than one device at the same time.

This can be used to make the same call on several radios simultaneously, they might be in different areas or radios running different system types.

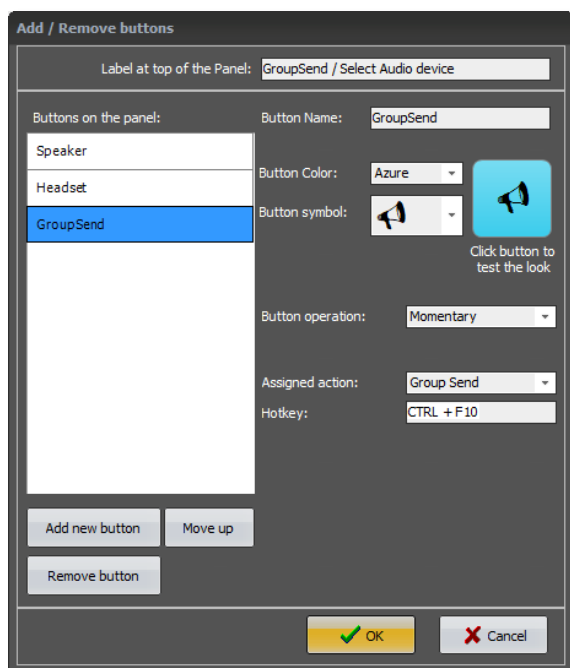
It could also be an “All call” to give for example a fire alarm in a factory by transmitting on all SoftRadio connected radios at the same time.

### 5.1 Create a new button

Go to Add/Remove buttons.

Click “Add new button” and give it the looks and the functions you need. The example below is a typical GroupSend button.

Click OK and then again OK on the Settings menu.



*Example with a GroupSend button added*

### 5.2 Restart

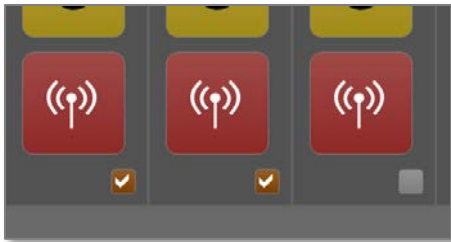
After doing the settings and clicking OK, you also need to restart SoftRadio for the new function to be active.



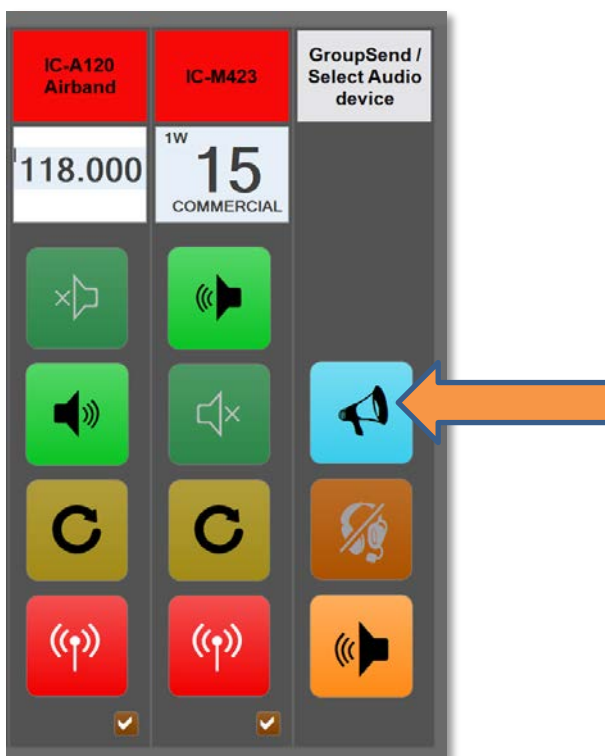
### 5.3 Setting up the GroupSend radios

After creating the GroupSend button you need to define what radios or other devices that shall be included in the transmission when you press the button.

This is done by ticking the box next to each device. The setting can be changed at any time by the operator.



*Example with two radios selected for GroupSend*

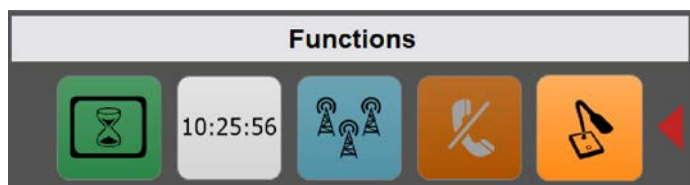


*When pushing the GroupSend button the selected radios transmit*

## 6 More functions

There are two more standard functions added to the Custom Functions Panel.

The setup is similar to the GroupSend described above.



### 6.1 Show Time

Showing a digital clock on the panel.

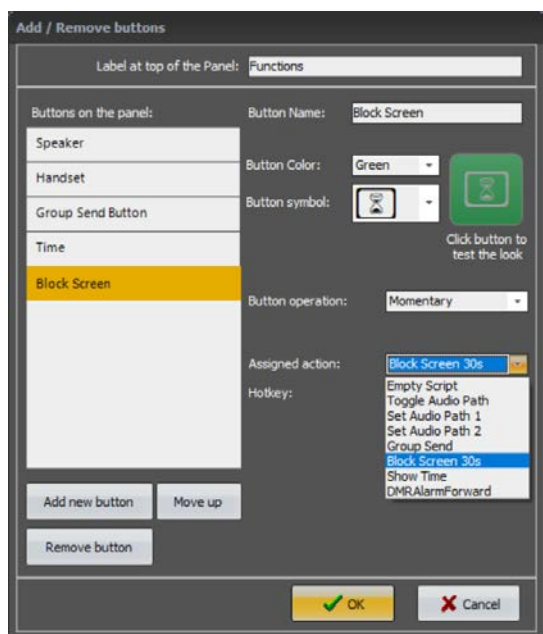
Create a new button, and then under “Assigned action” select “Show Time”. This will give a white button with black digits showing the PC’s system time.

The colours are not selectable and the button cannot be pushed. It is only information.

### 6.2 Block Screen

Blocking the screen for 30 seconds so that it can be cleaned without pushing all the virtual buttons. Practical on touch screen systems.

Create a new button, and then under “Assigned action” select “Block Screen 30s”. Then assign a symbol and a colour to the button. We suggest the use of the symbol of a screen with an hour glass inside.



*Example when selecting Assigned Action*

## 7 Custom designed functions

You can also get your own special buttons on the panel. We then use user defined scripts to make new buttons and new functions.

We have for example made buttons for alarm purposes, repeater on/off and quick select of a phone number in the SIP phone.

On the web page there is a further description of an example of this for a customer. [www.lse.se/cfp](http://www.lse.se/cfp)



*Example from Green Cargo*

Please ask if there is a need for custom designed functions.



Proudly made in Sweden by

**LS Elektronik AB**

[www.lse.se](http://www.lse.se)

**mimer@softradio.se**