

## Cable Kit 3018 Interface 3009/09

### Mimer SoftRadio – Universal kit

#### Remote functionality

This cable kit will together with the Mimer Network Interface give remote control of the radios audio and PTT functions.

The kit fits most radio types through the basic connections of microphone, speaker and PTT.

Alternatively other products than radios can be connected, for example a PA system.

#### Power

Connect the red/black cables to a power source. Typically 12VDC, 0,5A. Red is positive and black is negative.

#### Audio output

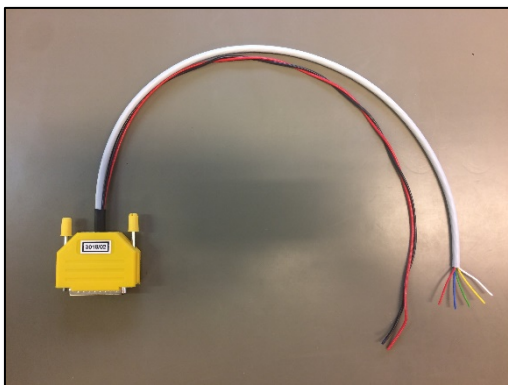
Preferably connect the outgoing audio from the radio to an output with a fixed level that is not affected by the setting of a volume control on the radios front panel. If that is not possible, set the volume control to 50-60% level.

#### Audio level adjustment

The audio levels in/out between radio and Network Interface can be set in the software "Network Interface Setup". See screen shots on next page.

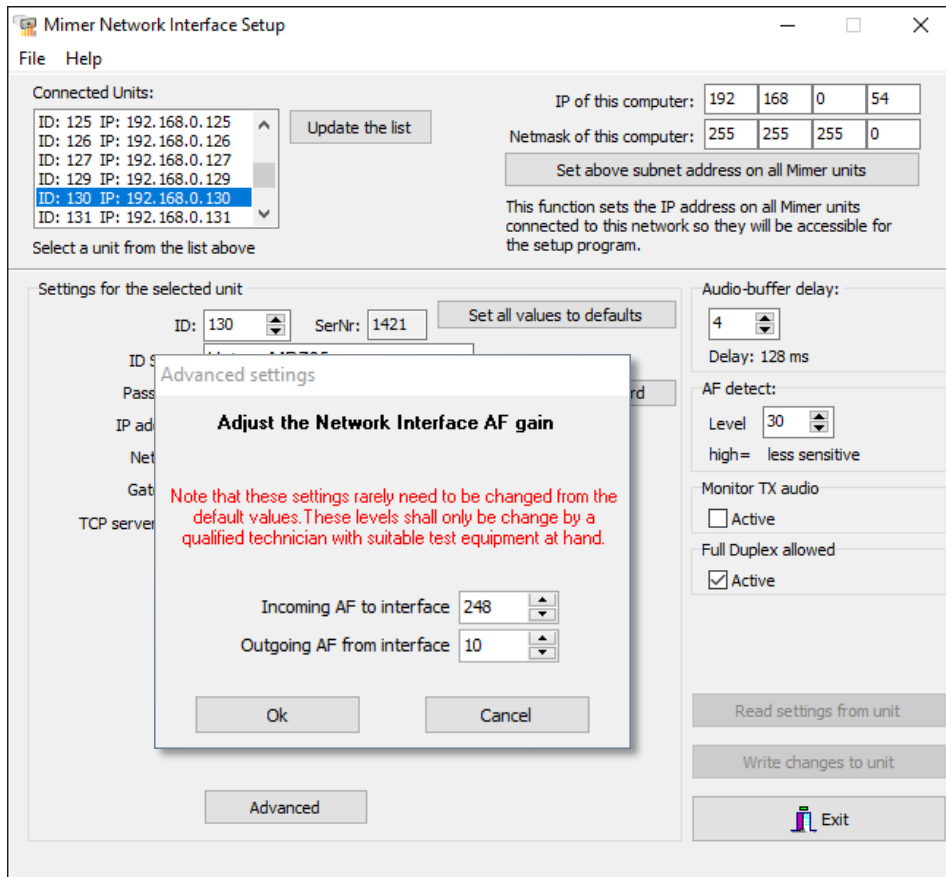
Before changing the audio levels in the interface it is important to be sure that the operator PC's microphone level is correct. Use the tool "Audio Levels" that can be found under "View" in Mimer SoftRadio. Set the PC microphone level so that the level bar is normally green and hits the top (red) when you speak at a high level.

There are more reading on audio settings in the Setup Guide for Mimer SoftRadio and on the web page: [www.lse.se/audio](http://www.lse.se/audio)

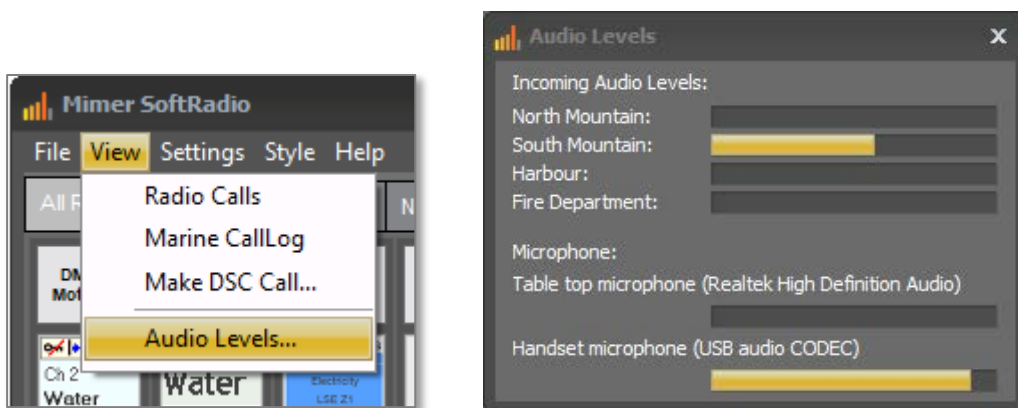


*Cable Kit 3018*

## Screen shots

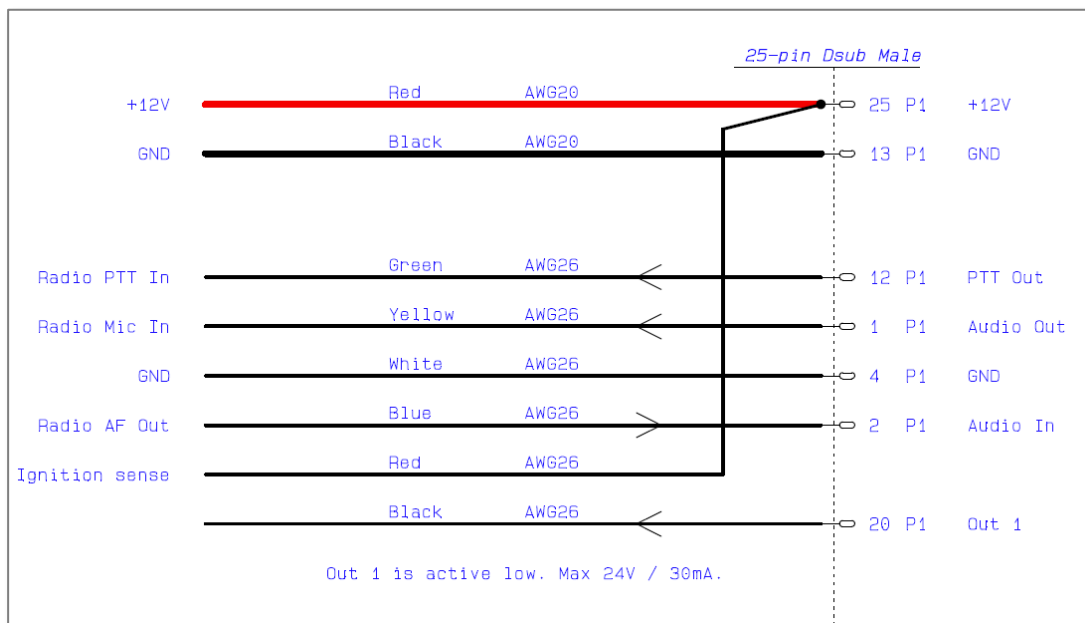


The key "Advanced" above brings forward the menu for setting of audio levels in/out of the Network Interface.



Select View and Audio Levels to find the peak meters.

## Cable connection



### PTT Out

The “PTT Out” from the interface is an Open Collector that goes low when active.

This fits most radios, since they use a ground signal for PTT.

### Out 1

The “Out 1” has a reverse-current protected 5.6k Ohm pull-up to +5V. It goes low when active, Max 24V / 30mA.