



**Mimer Option 3151**  
**ATIS Export**  
**for Marine VHF use**

Release date Sept 04, 2018

This guide will help with the use and setup of your Mimer option 3151 giving an export function to third party software of incoming ATIS messages. Please also refer to the help texts in the software and to the web page [www.lse.se](http://www.lse.se).

# 1 Table of Contents

- 1 TABLE OF CONTENTS ..... 2**
- 2 GENERAL ..... 3**
  - 2.1 SOFTWARE NEEDS ..... 3
  - 2.2 HARDWARE NEEDS ..... 3
- 3 FUNCTIONALITY ..... 4**
  - 3.1 CONNECTION OVER WAN OR THE INTERNET ..... 4
- 4 SETTING UP ..... 5**

## 2 General

Mimer Marine Calls, option 3115, receives selective calls, ATIS and DSC, in a Marine Radio system and shows a log of received calls. They are also appended to a log file in plain text format. DSC calls can also be sent with this option.

With the ATIS Export software, 3151, the ATIS information can be exported to third party systems.

The Export software can also work standalone without Mimer SoftRadio or the option Marine Calls being installed.

### 2.1 Software needs

No other software is needed. ATIS Export will work without having SoftRadio installed.

### 2.2 Hardware needs

Any analogue radio type in the Marine VHF band can be used. It does not have to be a dedicated Marine radio.

The network interface by the radio needs to be fitted with an FSK-encoder/decoder, part number 3095.

## 3 Functionality

When an ATIS telegram is detected in the FSK decoder in the network interface it will be handled there and broadcasted as a UDP Mimer message in the local LAN.

The ATIS Export software will capture the message and send it to a predefined IP address and UDP port number as a plain ASCII text. At that port a third party software can fetch the message.

This is for example useful if there is a GIS system keeping track of the ships on a map. You might then use the ATIS information to highlight on the map which ship that is transmitting.

### 3.1 Connection over WAN or the Internet

In systems where the radio receiving the ATIS message is connected over a WAN or the Internet you will need to use a Mimer NetworkRepeater (2861 or 2861/02).

The NetworkRepeater will connect with TCP to the network interface by the radio and then rebroadcast the information with UDP in the local LAN.

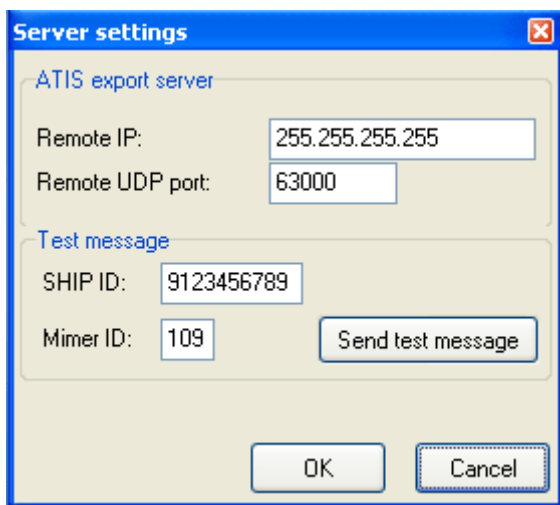
If the same radio is used for audio, the operator's voice communication will also be connected the same way through the NetworkRepeater.

## 4 Setting up

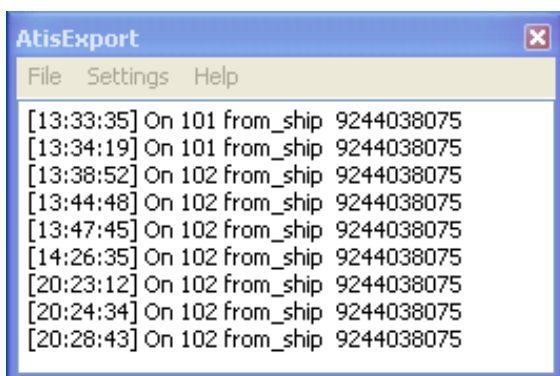
In the settings window a remote UDP port is set for where another application can find the information.

In this example the remote IP is set to 255.255.255.255, this means broadcast to all. It can also be pointed at a specific IP address.

Test messages can also be sent to see that the information reaches the third party application.



*Settings window for the ATIS export function*



*Test window showing the exported messages*



Proudly made in Sweden by

**LS Elektronik AB**

[www.lse.se](http://www.lse.se)

[mimer@softradio.se](mailto:mimer@softradio.se)