



Mimer Product Catalogue

Valid from June 2025

Contents

NEW EQUIPMENT AND UPDATES	3
MIMER SOFTRADIO	4
BASIC OPERATOR SOFTWARE	5
EXTENDED OPERATOR SOFTWARE	6
MIMER SOFTRADIO SERVICE API	7
NETWORKINTERFACE	8
NETWORKINTERFACE LE	14
NETWORKINTERFACE PA & FOGHORN	15
VIRTUAL NETWORKINTERFACE KAIROS	16
MIMER RADIOSERVER	17
MIMER NETWORKREPEATER	17
MIMER VOICELOG	18
MIMER RTP GATEWAY	18
MIMER INFOSERVER	18
MIMER MAPVIEW	19
AUDIO AND PTT ACCESSORIES	20
INSTALLATION ACCESSORIES	23
DISPATCHER PC´S	25
MIMER X-LINK MK2	27
MIMER SOFTLINE	29
UPGRADES, SUPPORT AND WARRANTY	31



Price reductions

As part of an ongoing effort to improve efficiency and reduce production costs, we have redesigned several of our hardware platforms. Thanks to these improvements, we are now able to offer **reduced prices** on selected products — without compromising quality or performance.

This is mainly affecting our Network interfaces (both LE and the normal ones) as well as our microphones.

SLA's now optional

After listening to feedback from our customers SLA's are now included free of charge for year 1. After year 1 SLA's are optional. Please see page 31 for more information.

New products

Category	Update
Software Updates	<ul style="list-style-type: none"> • AI Voice To Text - Transcription for VoiceLog (released in Q1) • Sailor 7222 – Remote Control for Sailor 7222 radios (released in Q1) • Mimer SoftRadio Service API - Connects virtually any radio system with any operator environment
New Radio Models	<ul style="list-style-type: none"> • Icom M510BB • Motorola MXM600 • Sailor 7222
New Cable Kits	<ul style="list-style-type: none"> • 3505: Cable Kit, Spintso RefCom II • 3511: Cable for X-link MK2, Kenwood Portable NX1000 • 3512: Cable for X-link MK2, RuGear POC • 3514: Cable Kit, V-Com M80 • 3515: Cable Kit, Tait Base station • 3517: Cable Kit X-Link, Kenwood NX5200 • 3519: Cable Kit for Icom M25 • 3904: Cable Kit, Zello 15PIN
New Hardware & Products	<ul style="list-style-type: none"> • New Table Top Microphone with AGC, USB and built in speaker (Q3) • Upcoming: Mimer Gateway, a flexible and software-based solution set to replace both the RadioServer and NetworkRepeater in Q4.

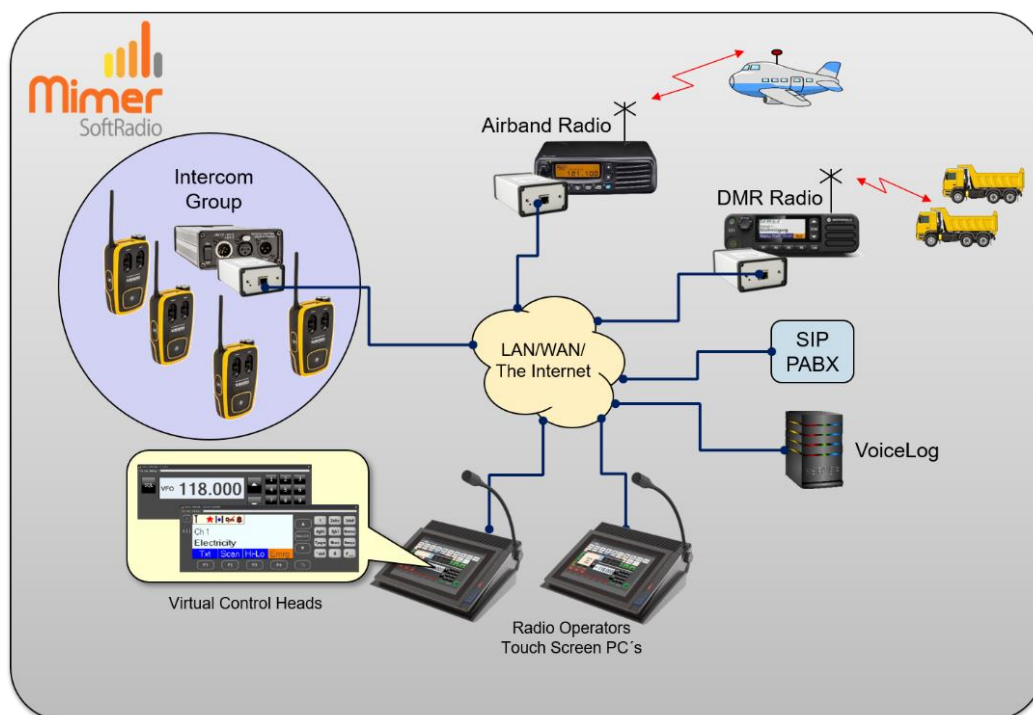
Mimer SoftRadio

With SoftRadio you can remote control your two-way radios from any Windows PC. The radios are connected through ordinary IP connections, either local in a LAN or remote over WAN or the Internet, also over satellite.

Many radios can be operated from a virtual control head, giving the operator the feeling of sitting in front of the radio although the radio might be in another town.

Each operator can also handle other devices such as phones and intercoms. And each device can be used by many operators in parallel. You can mix different types of radios and systems, both analogue and digital.

To make the system complete there are many options and accessories, for example an audio recorder and a GPS positioning system.



Example of two operators working with Intercom, Airband and DMR radios plus SIP phone. All recorded on the VoiceLog.

Read more on: www.lse.se

And about user cases on: www.lse.se/users

At the end of the price book, you will also find the products **X-Link** and **SoftLine**.

We reserve the rights for errors.

Basic Operator Software

Features



- License for one PC
- Connects up to eight devices
- Runs on Windows 10 & 11
- Controls PTT, Speakers and more
- Handles all types of radios, Phones and Intercom
- Includes Virtual Control Heads

Part number	Description
2855	Mimer SoftRadio software license

Part number	Add-ons to the basic software
2867	CrossPatch Links two or more radios together through Mimer SoftRadio
3013	Custom Functions Panel Easy selection of audio devices and a group send function
3046	RadioCalls Gives a contact list and pre-programmed text messages ¹ Displays the latest incoming calls (good when using PTT-ID) ¹
3115	Marine Calls Makes it possible to receive and transmit DSC calls and to receive ATIS calls, also includes a CallLog function
3151	ATIS Export Sends the decoded ATIS message to third party software
3154	SIP Connect Gives the operator a SIP device panel
3154/02	Multi SIP Connect Gives the operator multiple SIP device panels
2887/03	Tone PTT Control For base station systems that use single tone for PTT
2887/04	External Alarm Gives a logical output in the PC Com-port at selective calls
3103	Diversity (voting) Selects audio from the best receiver when connecting more than one receiver on the same radio channel ¹
3289	Mimer Kiosk A setup script to run the operator PC in "Kiosk mode" Sold together with preprogrammed PC's
3426	Auto (Broadcast) Radio Mute Gives an I/O output when any device receives. The I/O can then be used for turning off the speaker on a broadcast radio.

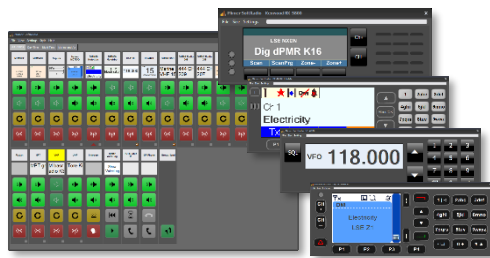
¹ Works only on specific radios, please refer to web or ask

* All software, network interfaces, X-link and Softline comes with Basic SLA free of charge during year 1. Premium and 24/7 SLA are optional. See page 31 for more details.

Features

- License for one PC
- Connects up to 60 devices
- Runs on Windows 10 & 11
- Controls PTT, Speakers and more
- Handles all types of radios, Phones and Intercom
- Includes Virtual Control Heads
- Extra options

Extended Operator Software



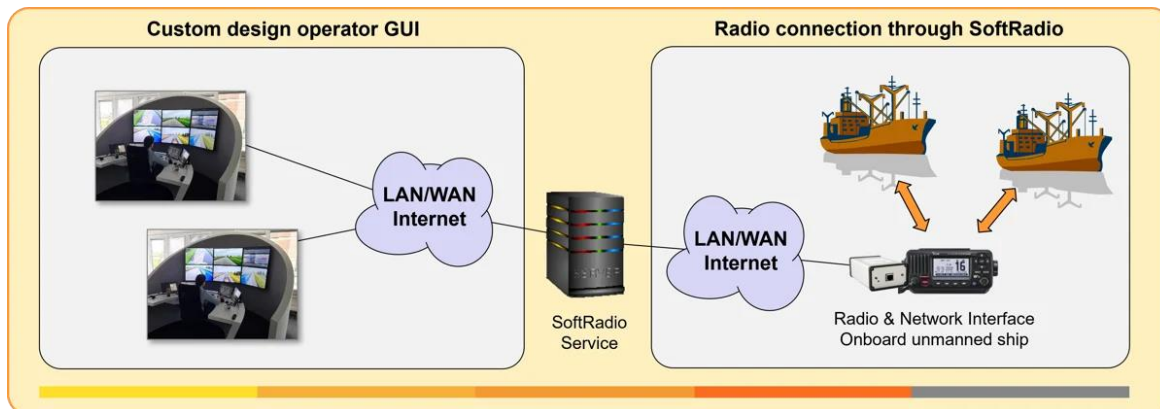
Part number	Description	
2855/30	Mimer SoftRadio XL software license	

Options for XL

Part number	Add-ons to Mimer Softradio XL	
<p>All options for the standard SoftRadio version (see page 4) also work with the XL version. In addition the following options are available to XL: More info on www.lse.se/xl</p>		
3299	Multi Speakers (formerly known as Quad Speakers) Lets you direct the audio into eight operator speakers (instead of two)	
3049	Multiple Hotkeys Gives the possibility to dedicate separate keyboard keys to each radios PTT, volume and speaker on/off	
3236	Advanced Audio Messages Gives the possibility to record and store multiple audio messages that can be used as manual or automatic answers to calls	
3251	Auto Rx Response Add on to "3236-Advanced Audio Messages" Sends an audio message after audio reception	
3305	Profiles Gives the operator PC many profiles, editable by a supervisor <i>Only sold for systems with 10 or more operators</i>	
3306	Zone Extensions Expands the number of nodes a SoftRadio system can handle	
3298	User Status Reports Background software. Sends operator info to the InfoServer.	
3178	Damm Tetraflex Connect Connects directly into the Damm infrastructure w/o a donor radio. You can use as many talk groups as you like. www.lse.se/damm	

* All software, network interfaces, X-link and Softline comes with Basic SLA free of charge during year 1.
Premium and 24/7 SLA are optional. See page 31 for more details.

Mimer SoftRadio Service API



The Mimer SoftRadio Service API enables seamless integration of third-party systems with Mimer SoftRadio for real-time status monitoring, Push-To-Talk (PTT) control, and audio streaming. Running as a background Windows service, it's designed for dispatch, alarm, and analytics systems where reliable and remote radio access is essential.

Ideal for control centers integrating radio into dispatch tools, maritime and industrial sites managing remote radios (e.g. onboard ships or at isolated facilities), and smart systems automating communication in security, ports, and airports.

Key Features – Mimer SoftRadio Service API

- **RESTful JSON API** – Standardized interface using HTTP and JSON for easy integration with third-party systems
- **Audio and PTT control** – Enables external systems to send/receive audio and control Push-To-Talk
- **Status monitoring** – Provides real-time status updates for each SoftRadio device and operator
- **Multi-connection support** – Handles multiple simultaneous API connections
- **Background service** – Runs as a Windows service with no need for user interaction
- **Authentication & access control** – Secure login and role-based permission model
- **Event and message logging** – Full logging of requests, system messages and event triggers
- **Configurable endpoints** – Allows customization of available API endpoints and services per deployment
- **Scalable licensing** – Licenses based on number of concurrent operator sessions – from 1 to unlimited

Part number	Options
3600	Mimer SoftRadio Service S – 1 concurrent operator, unlimited connections
3601	Mimer SoftRadio Service M – 4 concurrent operators, unlimited connections
3602	Mimer SoftRadio Service L – Unlimited concurrent operators, unlimited connections

* All software, network interfaces, X-link and Softline comes with Basic SLA free of charge during year 1. Premium and 24/7 SLA are optional. See page 31 for more details.

NetworkInterface

Radios with Virtual Control Heads

Features



- Connects to radio audio and to radio remote control
- Connects to 10/100base IP (RJ45)
- Room for option boards
- Details on each radio's webpage

www.lse.se/radios

Motorola Radios

Part number	Description	
3009/16	Motorola MotoTrbo DM3600/3601 and DM4600/4601 *	
3022/02	Cable Kit	
3009/24	Motorola MTM5200 / MTM5400 / MXM600	
3043	Cable Kit MTM5200 / MTM5400 / MXM600 back port	
3043/02	As above plus emergency trigger PIN23	
3009/65	Motorola MTM5500 / MTM5400 w. Expansion Head port	
3127	Cable Kit MTM5500 / MTM5400 w. Expansion Head port	
3009/04	Motorola MTM700/800 (not MTM800E)	
3019	Cable Kit	
3009/03	Motorola GM-series *	
3009/25	Motorola CDM1250 *	
3016	Cable Kit	

Sepura Radios

Part number	Description	
3009/49	Sepura SRG 3900 / SCG22 w. control head SCC3 (shows colour display)	
3224	Cable Kit SRG3900 (also works with SCG22+adapter 300-02007)	
3432	Cable Kit SCG22	
3009/08	Sepura SRM/SRG 2000/3500/3900 (shows B/W display)	
3015	Cable Kit	

Hytera Radios

Part number	Description	Price
3009/61	Hytera HM782/HM785/HM788*	
3335	Cable Kit	
3009/55	Hytera MD782/MD785/MD788*	
3307/02	Cable Kit	

* All software, network interfaces, X-link and Softline comes with Basic SLA free of charge during year 1. Premium and 24/7 SLA are optional. See page 31 for more details.

Kenwood / Johnson Radios		
Part number	Description	
3009/29	Kenwood NX-720/820-series and more	
3116	Cable Kit (DB15 High dense)	
3009/33	Kenwood TK-7360/8360-series and more	
3116	Cable Kit (DB15 High dense)	
3009/30	Kenwood TK-718X/818X-series and more	
3035/02	Cable Kit (DB25)	
3009/38	Kenwood NX-5000-series	
3035/02	Cable Kit (DB25)	
3009/67	Johnson / Kenwood Viking-series	
3424	Cable Kit (DB25)	

Icom Radios		
Part number	Description	
3009/31	Icom IC-M423/M424* & IC-M400BB, Marine VHF radio	
3126/02	Cable Kit	
3009/69	Icom IC-M410BB / M510BB, Marine VHF radio	
3126/02	Cable Kit	
3009/46	Icom IC-M506, Marine VHF radio	
3126	Cable Kit	
3009/42	Icom IC-A120, Airband radio	
3166/02	Cable Kit	
3009/20	Icom IC-F5060-series and more	
3205	Cable Kit 25PIN back connector	
3009/48	Icom IC-F5400/6400-series	
3243	Cable Kit	
3009/51	Icom IC-FR5000/6000-series base stations	
3247	Cable Kit 25PIN back connector	
3519	Icom M25, Cable Kit	

* All software, network interfaces, X-link and Softline comes with Basic SLA free of charge during year 1.
 Premium and 24/7 SLA are optional. See page 31 for more details.

Jotron Radios		
Part number	Description	
3009/45	Jotron TR7750 Airband	
3009/37	Jotron TR7750C Marine band	
3179	Cable Kit, full radio	
3268	Cable Kit, receiver only (RA7203)	

3009/43	Jotron TR7550 Airband w. connection through 2-wire line	
3214	Cable Kit	

Trig Radios		
Part number	Description	
3009/60	Trig TY91, TY92	
3328	Cable Kit, TY91	
3328/02	Cable Kit with connector for Trig Control Head, TY91	
3328/03	Cable Kit, TY92	
3328/04	Cable Kit with connector for Trig Control Head, TY92	

3400	Trig TY91, Heavy Duty Interface	
3398	Cable Kit to Trig Radio	
3410	Cable Kit for IP connection	

Sailor Radios		
Part number	Description	
3009/56	Sailor 6222 / 6248	
3092	Cable Kit	
3009/66	Sailor 6222 / 6248 w. relay output for broadcast radio mute	
3425	Cable Kit w. cables for radio mute	
3009/70	Sailor 7222	
3092	Cable kit Sailor 7222	
3009/62	Sailor 6310 MF/HF	
3092	Cable Kit (changed from part number 3378)	
3009/64	Sailor 6390 Navtex	
3380	Cable Kit	
3009/63	Sailor 6110, SAT-C (planned release Q4-2025)	
3379	Cable Kit	

* All software, network interfaces, X-link and Softline comes with Basic SLA free of charge during year 1. Premium and 24/7 SLA are optional. See page 31 for more details.

Other Radios		
Part number	Description	
3009/01	Ericsson Aurora / Niros TRX3001	
3025	Cable Kit	

3009/47	TP7000 / TP929M	
3227	Cable Kit	
3505	Spintso RefCom II, Cable Kit	
3514	V-Com M80, Cable Kit	
3009/72	Network Interface, Tait Base station	
3515	Tait Base station TB9400, Cable Kit	
3009/71	Network Interface, Transport Vehicle	

Options		
Part number	Description	
2864	Tone Decoder Module Decoder in the Network Interface for CCIR/EEA/ZWEI etc.	
3095	FSK Module Enc/Decoder in the Network Interface for FSK, used for ATIS and DSC	
3102	RSSI Input Module for 3009/03 Takes the RSSI-signal from Motorola GM-series radios into the Mimer diversity system	
3323	Lower bandwidth for the audio Tuneable in two steps, se www.lse.se for details	
3323/02	Lower bandwidth for the audio + UDP Unicast	

More interfaces w/o Virtual Control Head available further down.

Mounting brackets available among the installation accessories.

Note that some radios have different names outside of Europe. Details can be found on www.lse.se.

* All software, network interfaces, X-link and Softline comes with Basic SLA free of charge during year 1.
Premium and 24/7 SLA are optional. See page 31 for more details.

NetworkInterface

Radios and other equipment
without Virtual Control Heads



Features

- Connects to E&M + PTT
- Connects to 10/100base IP (RJ45)
- Versions with line transformers available
- Room for option boards
- I/O ports available
- Duplex audio possible (except on 3009/07)

www.lse.se/universal

Part number	Description	
3009/09	Network Interface with Generic radio connection, mic level + speaker level + PTT	
	Use the same cable kits as for the LE-Interface 3130, on page 10	
3009/00	Network Interface with 6-wire, line level in/out -10dB + separate PTT (transistor to ground)	
3038	Cable Kit, generic with open end cables, 6-wire	
3038/02	Cable Kit, generic with open end cables, 6-wire + SQ input	
3009/54	Network Interface with 6-wire, line level in/out -10dB + separate PTT (relay closure)	
3301	Cable Kit, generic with open end cables, 6-wire	
3009/22	Network Interface with 4-wire, line level in/out -10dB, PTT through closure of the Tx-line	
3033	Cable Kit, generic with open end cables, 4-wire	
3033/02	Cable Kit, generic with open end cables, 4-wire w. I/O In/Out	
3009/07	Network Interface with 2-wire line, line level in/out -10dB, PTT via DC (or AC through SoftRadio option 2887/03)	
3032	Cable Kit, generic with open end cables, 2-wire	
3032/02	Cable Kit, generic with open end cables, 2-wire w. I/O In/Out	
3009/53	Network Interface without audio I/O's, relay output, alarm input (Used for NDB and more)	
3300	Cable Kit, power and I/O	
3009/57	Network Interface for connection to a table top microphone with built in speaker and PTT	
	Suitable microphone 3110/07 on page 20	
3009/68	Network Interface for connection to an ambient microphone Including built in amplifier	
3428	Cable Kit w. BNC connector for microphone audio	

* All software, network interfaces, X-link and Softline comes with Basic SLA free of charge during year 1. Premium and 24/7 SLA are optional. See page 31 for more details.

Options		
Part number	Description	
2864	Tone Decoder Module Decoder in the Network Interface for CCIR/EEA/ZWEI etc.	
3095	FSK Module Enc/Decoder in the Network Interface for FSK, used for ATIS and DSC	
3323	Lower bandwidth for the audio Tuneable in two steps, se web page for details	
3323/02	Lower bandwidth for the audio + UDP Unicast	

* All software, network interfaces, X-link and Softline comes with Basic SLA free of charge during year 1.
Premium and 24/7 SLA are optional. See page 31 for more details.

NetworkInterface LE

Features

Radios without
Virtual Control Heads



www.lse.se/universal

Mounting bracket available on page 23

- Connects to E&M + PTT
- Connects to 10/100base IP (RJ45)
- Cannot be fitted with option boards
- Cannot give duplex audio
- Optionally delivered in the standard large silver coloured* interface box

Part number	Description	
3130	Network Interface with Generic radio connection, mic level + speaker level + PTT (Black box)	
3130/03	Network Interface with Generic radio connection, mic level + speaker level + PTT (Silver box*)	
3018	Cable Kit, generic with open end cables (for 3009/09)	
3018/02	Cable Kit, generic with open end cables (for 3130)	
3021/02	Cable Kit, Motorola CM with 16 pin back port	
3021	Cable Kit, Motorola GM/DM1000/2000 with 20 pin back port	
3138/02	Cable Kit, Motorola DM3000/4000 with 26 pin back port	
3026	Cable Kit, Motorola MTM5400/MXM600	
3316	Cable Kit, Motorola MTM800/MTM800E	
3255	Cable Kit, Motorola SLR5000 Base station	
3260	Cable Kit, Motorola SL1600 / TLK100	
3420	Cable Kit, Motorola TLK150	
3320	Cable Kit, Motorola MTP850S	
3321	Cable Kit, Motorola MXP600	
3342	Cable Kit, Motorola MTP3550	
3250	Cable Kit, Sepura Tetra (requires control head or AIU-box)	
3259	Cable Kit, EADS/Airbus TMR880i	
3124	Cable Kit, Kenwood 15 Pin HD	
3035	Cable Kit, Kenwood 25 Pin	
3314	Cable Kit, Kenwood TKR750 Repeater	
3166/02	Cable Kit, Icom IC-A110 / A120	
3195	Cable Kit, Icom IC-F5062/6062 and more w. 25PIN connector	
3196	Cable Kit, Icom IP-501H, 503H, IP-100H and more portables	
3197/02	Cable Kit, Icom IC-F6122 and more w/o 25PIN connector	
3274	Cable Kit, Icom IC-F5400	
3293	Cable Kit, Icom A25	
3456	Cable Kit, Icom F8101	
3037	Cable Kit, Hytera MD785 / HM785	
3271	Cable Kit, Hytera RD985	

* All software, network interfaces, X-link and Softline comes with Basic SLA free of charge during year 1.
Premium and 24/7 SLA are optional. See page 31 for more details.

3265	Cable Kit, Jottron TR7750 / TR7750C	
3313	Cable Kit, Jottron TR810	
3418	Cable Kit, Jottron TR910	
3258	Cable Kit, Kirisun M50	
3092	Cable Kit, Sailor 6222 / 6248 / 6310 / 7222	
3276	Cable Kit, Sailor RT5022	
3290	Cable Kit, Yaesu FTA250L	
3295	Cable Kit, Vokkero Wi	
3310	Cable Kit, Superstar 2400 CB-Radio	
3318	Cable Kit, Wenden WTR388	
3409	Cable Kit, JPS Z-series (Zello)	

NetworkInterface

Intercom



Features

- Connects to 10/100base IP (RJ45)

www.lse.se/intercom

Part number	Description	
3131	Interface for Intercom between operators, no external wire connection (LE)	
3226	Power cable to above interface	

There is also an alternative, if your system has a NetworkRepeater, se below.

NetworkInterface

PA & Foghorn



Features

- PA function through horn speaker(s)
- Fog horn function through the same speaker(s)
- Ambient listening through microphone

www.lse.se/pa

Part number	Description	
3009/50	Interface for PA, FogHorn & Ambient microphone	
3277	Cable Kit	
3277/02	Cable Kit	

Please find PA speaker, amplifier, and microphone on the accessory pages.

* All software, network interfaces, X-link and Softline comes with Basic SLA free of charge during year 1. Premium and 24/7 SLA are optional. See page 31 for more details.

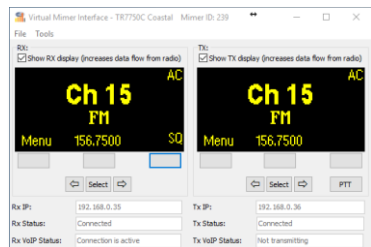
Virtual NetworkInterface Jotron

Jotron radios with ED137.

This interface works like the standard physical Network Interfaces but is delivered as PC software.

Features

- Runs as PC software
- Connects via IP to the base radio's receiver and transmitter
- Admits remote control of the radio with similar engineering menus as on the radio front panel (from the server PC)
- Works as all other physical Network Interfaces in a SoftRadio system
- Gives the operators a Virtual Control Head with channel and squelch settings



Engineering settings on server

Part number	Description	
3202	Virtual Interface for Jotron ED137, TR7750 / TR7750C	
3302	Support for ATIS	
3303	Hot standby software (one option needed per server pair)	

www.lse.se/jotron



Virtual Control Head
at operator

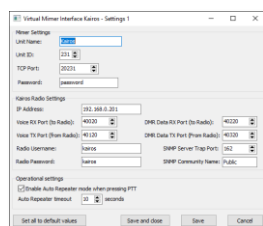
Virtual NetworkInterface Kairos

Kairos Base stations.

This interface works like the standard physical Network Interfaces but is delivered as PC software.

Features

- Runs as PC software
- Connects via IP to the base radio
- Admits remote control of the radio
- Works as all other physical Network Interfaces in a SoftRadio system



Engineering settings on server

Part number	Description	
3281	Virtual Interface for Kairos base stations	

www.lse.se/kairos

* All software, network interfaces, X-link and Softline comes with Basic SLA at 12% price per year.
Premium and 24/7 SLA are optional. See page 31 for more details.

Mimer RadioServer

Features



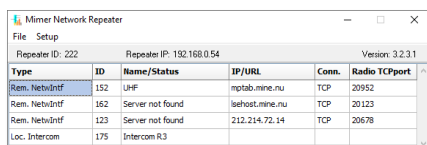
- Linux software
- With or without hardware
- Connects devices over UDP Broadcast
- Connects operators over TCP (standard)
- Connects operators over UDP Unicast (sat-mode)
Sat-mode handles long latency and high jitter

www.lse.se/radioserver

Part number	Hardware servers	
2860/03	RadioServer Mk3 Standard version including Linux server H/W	
2860/05	RadioServer Mk3 satellite mode Satellite mode version including Linux server H/W	
3322	Spare power cable Fits RadioServer MK3	
Part number	Virtualized servers	
3170	RadioServer Image Virtual Server Linux image (Debian, vmdk file) to be run on customer H/W	
3170/04	RadioServer Image - Satellite mode Virtual Server Linux image (Debian, vmdk file) to be run on customer H/W	
Part number	Server Software	
3170/07	RadioServer Installation Package Deb package to be installed on customer Debian system	
3170/08	RadioServer Installation Package - Satellite mode Deb package to be installed on customer Debian system	
3170/09	RadioServer Installation Package Deb package to be installed on customer Ubuntu system	
3170/10	RadioServer Installation Package - Satellite mode Deb package to be installed on customer Ubuntu system	

Mimer NetworkRepeater

Features



- Windows Software
- Connects devices over TCP
- Connects operators over UDP Broadcast
- Two sizes
- Option for Intercom
- Option for Hot Standby

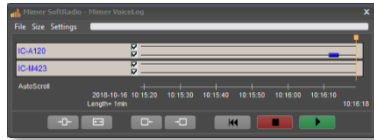
www.lse.se/networkrepeater

Part number	Description	
2861	NetworkRepeater	
2861/02	NetworkRepeater LE, connects max 8 devices	
Part number	Options	
3122	Intercom function	
3134	Hot Standby function	

* All software, network interfaces, X-link and Softline comes with Basic SLA free of charge during year 1.
Premium and 24/7 SLA are optional. See page 31 for more details.

Mimer VoiceLog

Features



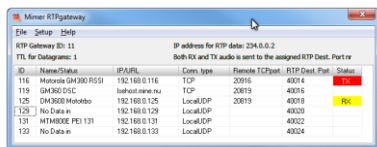
- Windows Server Software
- Records all audio in the system
- Time stamps all recordings
- Two sizes
- VoiceLog Player included for the administrator
- Large version logs ISSI/GSSI of the radio user
- Optional AI Voice transcription

www.lse.se/voicelog

Part number	Description	
2862	Mimer VoiceLog	
2862/02	Mimer VoiceLog LE, max 4 devices and 4 operators	
3479	AI Voice to Text add-on Voicelog (requires VoiceLog version 4.1 or higher)	
3480	Upgrade older Mimer VoiceLog to latest version incl AI Voice to Text	
3481	Upgrade older Mimer VoiceLog LE to latest version incl AI Voice to Text	

Mimer RTP Gateway

Features

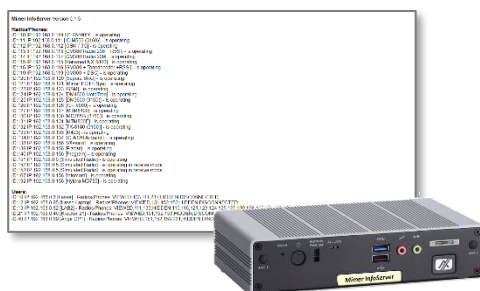


- Windows Server Software
- Sends all audio to a third party recorder in RTP format
- No operator software

Part number	Description	
3157	Mimer RTP Gateway	

Mimer InfoServer

Features



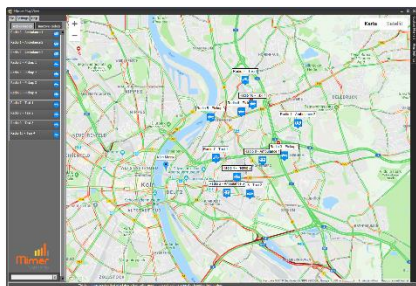
- Ready to run Linux server or virtualised server
- Keeps track of all units in the system
- Monitored through a web browser
- SNMP messaging

www.lse.se/infoserver

Part number	Description	
3132/02	InfoServer with SNMP – Hardware version	
3132/03	InfoServer with SNMP – Virtualised image version	

* All software, network interfaces, X-link and Softline comes with Basic SLA free of charge during year 1. Premium and 24/7 SLA are optional. See page 31 for more details.

Mimer MapView Mk2



Features

- Windows Software
- Shows GPS positioned radios on maps
- Track and trace of individuals
- Optionally uses off line maps
- Handles emergency alarms

Demo software available on request

Please see www.lse.se for updated info on functions and which radio types are compatible.

www.lse.se/mapview

Part number	Description	
3125	MapView, Server license	
3125/02	MapView, Operator license (price per operator)	
3125/03	MapView, Server add-on, Sepura indoor positioning	







A Network Interface and a Cable Kit to the Tetra radio (Sepura or Motorola) are needed.

* All software, network interfaces, X-link and Softline comes with Basic SLA free of charge during year 1.
Premium and 24/7 SLA are optional. See page 31 for more details.

Audio and PTT accessories

www.lse.se/accessories

	Part number	Description	
	3110	Heavy duty table top Microphone <ul style="list-style-type: none"> • Gooseneck mic • Heavy duty PTT key • Steady foot, total 0,9Kg • Connects to PC through 3,5mm mic audio and COM-port 	
	3110/04	Same as above, with one common D-sub and long cable. To be used with 3191	
	3191	Connection box with built in audio card and COM port adaptor. Connects two microphones 3110/04	
	3110/03	Heavy duty table top Microphone with <u>built in speaker</u> <ul style="list-style-type: none"> • Gooseneck mic • Built in speaker/volume control • Heavy duty PTT key • Steady foot, total 0,9Kg • Connects to PC through 2xUSB 	
	3110/06	Heavy duty table top Microphone with <u>built in speaker</u> <ul style="list-style-type: none"> • Same as the 3110/03 above plus an extra connection for a PTT foot switch. 	




	Part number	Description	
	3110/07	Heavy duty table top Microphone with <u>built in speaker</u> <ul style="list-style-type: none"> • Gooseneck mic • Built in speaker/volume control • Heavy duty PTT key • Steady foot, total 0,9Kg • Connects to Network Interface through one common D-Sub 	
	3110/05	Heavy duty table top Microphone w/o PTT <ul style="list-style-type: none"> • Gooseneck mic • Steady foot, total 0,9Kg • Connects to PC through 3,5mm analogue mic audio 	
	3112	Gooseneck Microphone for the microphones above. Spare part.	
	3198	Gooseneck Microphone for panel installation. Connection box and cable kit with 3,5mm connector for PC (PTT not included)	
	3145	Headset, Jabra BIZ 2400 <ul style="list-style-type: none"> • Light weight • Stereo • Connects to USB • Built in sound card • No PTT-key 	
	3153	Handset with cradle <ul style="list-style-type: none"> • Connects to USB • Built in sound card • PTT-key in the handset Can also be ordered together with Tipro PC preinstalled on either side.	

Mimer SoftRadio

RoIP remote control equipment
Product Catalogue, valid from June 23 2025
Page 22 of 32





	Part number	Description	
	3080	Microphone <ul style="list-style-type: none">• Computer style• Connects to 3,5mm (Product may vary from picture)	
	3083	Sound Card, USB (Product may vary from picture)	
	3096	Speakers <ul style="list-style-type: none">• Connects to 3,5mm (Product may vary from picture)	
	3078	Table top PTT <ul style="list-style-type: none">• Connects to COM-port	
	3079	Foot PTT <ul style="list-style-type: none">• Connects to COM-port	
	3266	Split cable <ul style="list-style-type: none">• Connects two PTT's to one COM-port	
	3204	COM-Port to USB adapter For use with external PTT when the PC does not have a COM-port (Product may vary from picture)	

	Part number	Description	
	3279	PA - Speaker Amplifier <ul style="list-style-type: none">• Input 230VAC• Output 100V	
	3280	PA Speaker <ul style="list-style-type: none">• 100V	
	3278	Microphone for outdoor use, including built in amplifier	

Installation Accessories

Note that electric plugs on all equipment are Euro-standard.

	Part number	Description	
	3203	Power Supply <ul style="list-style-type: none">• Input 115/230VAC• Output 13,6VDC• 8 Amp	
	3285	Power Supply <ul style="list-style-type: none">• Input 100/240VAC• Output 12VDC• 2 Amp	

Mimer SoftRadio

RoIP remote control equipment
Product Catalogue, valid from June 23 2025
Page 24 of 32






	Part number	Description	
	3106	Mounting bracket for the standard NetworkInterface	
	3106/02	Mounting bracket for the smaller NetworkInterface LE	
	3139	Open rack shelf, 3U, 30cm deep <ul style="list-style-type: none">Power supply & fusesInstallation of preferred SoftRadio NetworkInterface and radio (not included)	
	3139/02	Open rack shelf, 3U, 30cm deep <ul style="list-style-type: none">Same as above but without the PSU	
	3139/03	Open rack shelf, 3U, 30cm deep <ul style="list-style-type: none">Power supply & fusesInstallation of X-Link interface and radios (not included)	
	3169	Closed rack unit, 3U <ul style="list-style-type: none">Power supply & fusesInstallation of preferred SoftRadio NetworkInterface and radio (not included)	
	3169/02	Closed rack unit, 3U <ul style="list-style-type: none">Power supply & fusesInstallation of preferred SoftRadio NetworkInterface and radio (not included)With radio front visible	
	3169/03	Closed rack unit, 3U <ul style="list-style-type: none">Extra deep to host two radios, 520mmPower supply & fusesInstallation of preferred SoftRadio NetworkInterfaces and radios (not included)	

Other installation option on request

Dispatcher PC's

The Tipro dispatcher PC's comes fully set up with Windows, latest updates, all necessary drivers. Mimer Softradio and options are also installed, configures and optimized (price does not include Mimer Softradio and option licenses)

www.lse.se/pc


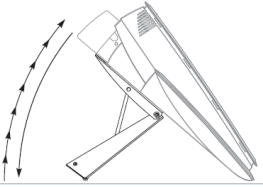
	Part number	Description	
	3140/05	Operator PC, Tipro BeFree07 <ul style="list-style-type: none">• Touch Screen PC, 7"• No fan (silent)• Row of function keys• Windows 11• Speakers/Microphone/PTT• Built in handset• Setup w. SoftRadio and options• SoftRadio license not included	
	3140	Operator PC, Tipro BeFree10 <ul style="list-style-type: none">• Touch Screen PC, 10,4"• No fan (silent)• Windows 11• Speakers/Microphone/PTT• Setup w. SoftRadio and options• SoftRadio license not included	
	3140/02	Operator PC, Tipro BeFree20 <ul style="list-style-type: none">• Touch Screen PC, 15"• No fan (silent)• Windows 11• Speakers/Microphone/PTT• Setup w. SoftRadio and options• SoftRadio license not included	

If you will be using the microphone/speaker for full duplex calls you should add the echo cancelation module found on the next page.



Mimer SoftRadio

RoIP remote control equipment
Product Catalogue, valid from June 23 2025
Page 26 of 32



	Part number	Description	
	3140/04	Operator PC, Tipro BeFree22 <ul style="list-style-type: none"> • Touch Screen PC, 15,6" • Fan less (silent) • Row of function keys • Windows 11 • Speakers/Microphone/PTT • Setup w. SoftRadio and options • SoftRadio license not included 	
	3144	Angle mechanism for the Tipro Operator PC:s above	
	3237	Echo Cancellation module. Recommended when using the Tipro in full duplex through the goose neck microphone. Factory fitted.	
		Spare PSU for BF10 & BF20	
		Mimer Softradio installation on Tipro PC purchased separately	
		Telephone support to setup Mimer Softradio on Tipro PC	

The 3153 handset above can be added as a side mounted module to the Tipro's.

	3484	Elo Slate <ul style="list-style-type: none"> • All-in-one touch screen PC • 15.6" • Windows 11 • Setup with Softradio and options • Softradio license not included 	
	3175/02	Operator PC, Lenovo M71Q <ul style="list-style-type: none"> • Small formfactor • Fan less (silent) • Windows 10 • Setup w. SoftRadio and options • SoftRadio license not included 	

Mimer X-Link Mk2

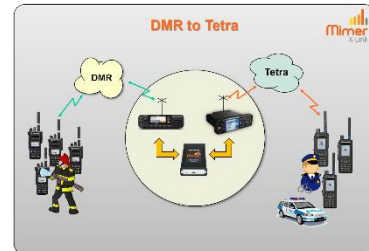
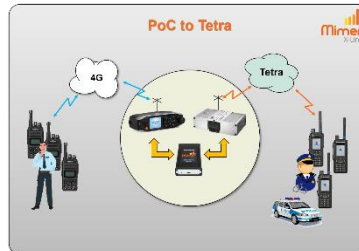
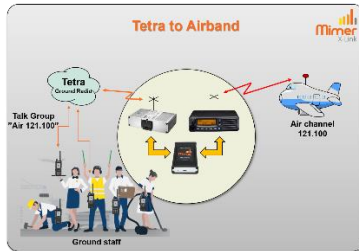
Mimer X-Link MK2 connects two radios together building a cross patch bridge between them. Audio that comes in through one radio is retransmitted on the other radio and vice versa.

More information on the web page: www.lse.se/x-link

Almost any two radios, and also other audio equipment like PA-systems, can be patched.

More cable kits will be available, please ask. 19"-rack available on the accessory's pages.

Please note, the X-Link MK2 unit needs two cable kits, one to each radio.



Part number	Description	
3350	X-Link MK2 Interface box	
3106/03	Mounting Bracket	
3254	USB micro, Cable for programming	

Part number	Cable Kits (One cable kit needed for each radio)	
3347	Open end cables	
3351	Sepura SRG-Control Head	
3352	Sepura SRG-Line In/Out	
3353	Sepura SRG-AIU	
3354	Motorola MTM5400/MXM600	
3355	Motorola MTM5500	
3357	Motorola DM4600 (26PIN)	
3358	Motorola TLK100 / SL1600	
3359	Motorola TLK150	
3360	Motorola CM/GM-series 16PIN	
3361	Motorola GM/DM-series 20PIN	
3362	Motorola MTP3550	
3411	Motorola MTM800E (no PEI connection)	

More cable kits on the next page.

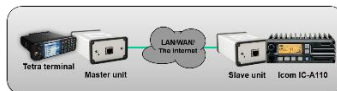
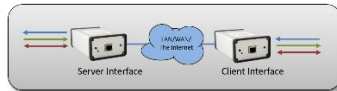
* All software, network interfaces, X-link and Softline comes with Basic SLA free of charge during year 1.
Premium and 24/7 SLA are optional. See page 31 for more details.

Part number	Cable Kits (One cable kit needed for each radio)	
3363	Icom IC-A110/A120	
3364	Icom IC-F5400	
3365	Icom IC-F5122 etc w/o 25PIN connector	
3366	Icom IC-F5062 etc w. 25PIN connector	
3367	Icom IC-FR5000	
3368	Icom IP501H/IP100H and other with 2-pin side connector	
3369	Jotron TR7750	
3370	Jotron TR810	
3416	Jotron TR910	
3371	Ericsson Aurora	
3372	Vokkero Wi	
3373	Hytera MD785 / MT680 / HM785	
3374	Kenwood NX3820/820, DB15HD	
3476	Kenwood 5000-series	
3511	Kenwood Portable NX1000, Cable for X-link MK2	
3517	Kenwood NX5200, Cable Kit X-Link	
3375	Estalky GT61	
3376	Kirisun M50	
3377	Airbus TR880i	
3427	Telox M6	
3356	Sailor 6222 / 6248 / 6310 / 7222	
3454	Simoco SRM9000	
3512	RuGear POC , Cable for X-link MK2	

More cable kits are continuously added, please see www.lse.se or apply

Mimer SoftLine

Mimer SoftLine is a special version of the SoftRadio system where two network interfaces are connected to each other instead of using a PC software at one end. The two interfaces connect to each other over LAN/WAN or the Internet so that the two nodes can be “anywhere”. More information available on the web pages: www.lse.se/softline



Features

- Point-to-point connection over LAN / WAN / The Internet
- No operator PC involved
- Remote audio, RS232 and I/O:s
- Cross connect radios back-to-back
- Radio at one end, mic/speaker at other end
- Radio at one end, control head + microphone at other



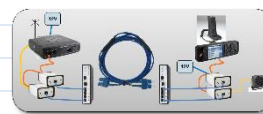
Part number	Generic use with Audio / I/O's / RS232	
3009/10	Interface generic use, line level -10dB (two units needed)	
3033	Cable Kit for above interface, with open end cables (no I/O)	
3033/02	Cable Kit for above interface, w. open end cables (with I/O leads)	
3033/04	Cable Kit for above interface, w. open end cables (with RS232 leads)	
3009/21	Interface generic use, mic/speaker levels (two units needed)	
3028	Cable Kit, generic for above interface, with open end cables	
	Cross Patch of two radios or remote control of radio with microphone and speaker	
3009/21	Interface generic use, mic/speaker levels	
3009/58	Interface at the microphone end (use microphone 3110/07)	
3018	Cable Kit, generic, with open end cables	
3021/02	Cable Kit, for Motorola CM/GM with 16 pin back port	
3174	Cable Kit, for Motorola DM with 20 pin back port	
3173/03	Cable Kit, for Motorola DM with 26 pin back port	
3026	Cable Kit, MTM5400/MXM600	
3124	Cable Kit, Kenwood 15 Pin	
3035	Cable Kit, Kenwood 25 Pin	
3092	Cable Kit, Sailor 6222	
3166/02	Cable Kit, Icom IC-A110 / A120	
3195	Cable Kit, Icom IC-F5062/6062 and more w. 25PIN connector	
3196	Cable Kit, Icom IP-501H, IP-100H and more portables	
3197	Cable Kit, Icom IC-F6122 and more w/o 25PIN connector	
3037	Cable Kit, Hytera MD785	
3246	Cable Kit, Sepura Tetra (requires control head or AIU-box)	
3126	Cable Kit, Icom M423/M424/M400BB/M506	
3282	Cable Kit, 2xDM2600 at each side for full duplex	

* All software, network interfaces, X-link and Softline comes with Basic SLA free of charge during year 1. Premium and 24/7 SLA are optional. See page 31 for more details.

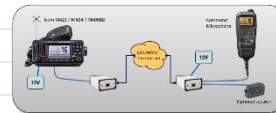
	Remote control of Sepura	
3009/13	Interface Sepura, Control head side	
2859/07	Cable Kit for the interface above	
3009/14	Interface Sepura, Radio side	
3015	Cable Kit for the interface above	
	www.lse.se/sl-sepura	



	Remote control of Motorola MTM5500	
3187	Complete kit with all interfaces and fibre switches	
	Includes all necessary cables, multimode fibre version	
3187/02	Complete kit with all interfaces and fibre switches	
	Includes all necessary cables, single mode fibre version	
3187/03	Same kit as above w/o the fibre switches	
	www.lse.se/sl-mtm5500	



	Remote control of Icom IC-M423/M424/M400BB/M506/M510	
3009/40	Interface, Command microphone side	
3189/02	Cable Kit for the interface above	
3009/41	Interface, Radio side	
3126/02	Cable Kit for the interface above	
	www.lse.se/sl-marine	



	Remote control of Motorola GM380/1280-series	
3009/12	Interface Motorola GM-series*, Control head side	
3017	Cable Kit for the interface above	
3009/03	Interface Motorola GM-series*, Radio side	
3016	Cable Kit for the interface above	
	*Works with GM380/1280, not GM340/360.	
	www.lse.se/sl-gm	

	SoftLine System	
3319	SoftLine Manager Server (Hardware version)	
3319/02	SoftLine Manager Server (VMDK version)	

	Power supply for the Control head / Control microphone side	
3285	100-240VAC to 12VDC, 2A (Euro plug on cable)	

* All software, network interfaces, X-link and Softline comes with Basic SLA free of charge during year 1. Premium and 24/7 SLA are optional. See page 31 for more details.

Upgrades, support and warranty

We offer three levels of Service Level Agreements (SLA): **Basic**, **Premium**, and **24/7**.

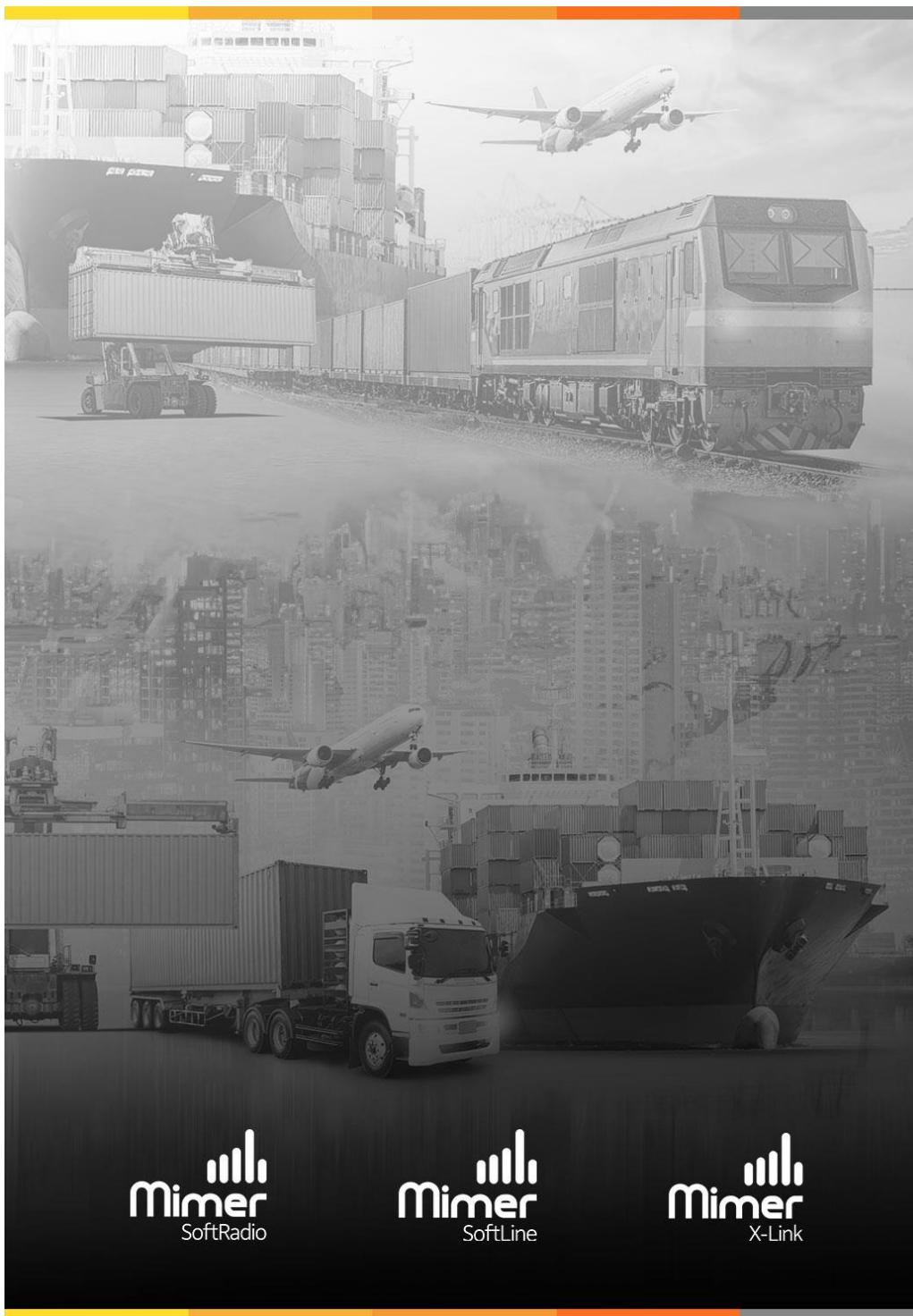
- **Basic SLA** is included free of charge during the first year for all software, network interfaces, X-Link and Softline products.
- **Premium** and **24/7** are optional upgrades for those who require extended support and additional benefits.

After the first year, you are free to choose the SLA level that best suits your needs — or opt out of SLA entirely.

Corporate SLA's are available, please contact your LSE representative for more information.

Service / Product	SLA		
	Basic	Premium	24/7
Annual Product Training, web based or classes at LSE ¹	•	•	•
Online wiki	•	•	•
Ticket Support and response time	Yes, 8 hours ²	Yes, 4 hours ²	Yes, individual
Software Maintenance Releases (dot releases)	•	•	•
Free Software Upgrades incl new releases		•	•
Phone support		• ²	24/7
Unlimited hardware warranty	-	•	•
Repair Performance Level, workdays turnaround	<30 days	<5 days	<5 days
Price per year (Basic SLA free for year 1)	12%	18%	POA
Notes:			
¹ Two persons in classes free of charge, online training is unlimited			
² During Mon-Fri 9am-430pm CET excl bank holidays			

For full terms and conditions please visit www.lse.se/warranty



Contact us for more information!

sales@lse.se | +46 8 36 42 25 | www.lse.se